

# LA-UR-11-11365

Approved for public release; distribution is unlimited.

Title: Updated Location Map for Well R-66

Author(s): Everett, Mark C.

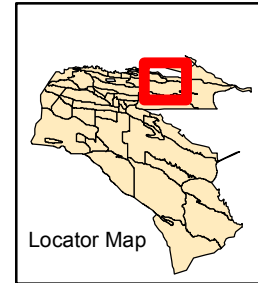
Intended for:  
NMED  
NMED  
Remediation  
Reading Room  
Consent Order



**Disclaimer:**

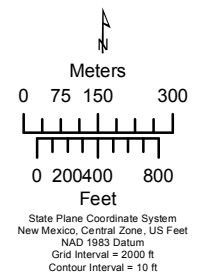
Los Alamos National Laboratory, an affirmative action/equal opportunity employer, is operated by the Los Alamos National Security, LLC for the National Nuclear Security Administration of the U.S. Department of Energy under contract DE-AC52-06NA25396. By acceptance of this article, the publisher recognizes that the U.S. Government retains nonexclusive, royalty-free license to publish or reproduce the published form of this contribution, or to allow others to do so, for U.S. Government purposes. Los Alamos National Laboratory requests that the publisher identify this article as work performed under the auspices of the U.S. Department of Energy. Los Alamos National Laboratory strongly supports academic freedom and a researcher's right to publish; as an institution, however, the Laboratory does not endorse the viewpoint of a publication or guarantee its technical correctness.

# Location of Well R-66



- ★ O-4
- R-66
- ⊕ Intermediate
- ⊕ Regional
- - - - - Dirt road
- — — — — Paved road
- ▭ TA boundary
- ▭ Structure
- ▭ Department of Energy

Map created by: Brad McKown  
 EP/ET/ER GIS Team  
 August 17, 2011  
 Map #11-0097-01



Data Sources:  
 Well Location: Los Alamos National Laboratory, Approximation generated by Dave Brinson, Unpublished 2011 project data, Project 11-0097.  
 Forest Roads: County of Los Alamos, Information Services, as published 16 May 2006.  
 Paved Road Arcs: Los Alamos National Laboratory, KSL Site Support Services, Planning, Locating and Mapping Section, 06 January 2004, as published 29 May 2009.  
 Hypsography: 10, 20 & 100 Foot Contour Intervals: Los Alamos National Laboratory, ENV Environmental Remediation and Surveillance Program, 1991.  
 Technical Area Boundaries & Land Ownership: Los Alamos National Laboratory, Site Planning & Project Initiation Group, Infrastructure Planning Office, September 2007, as published 04 December 2008.  
 Structures: Los Alamos National Laboratory, KSL Site Support Services, Planning, Locating and Mapping Section, 06 January 2004, as published 29 May 2009.

