

TOTAL LENGTH
OF CASING AND SCREEN (FT) 546.6 (untrimmed)

DEPTH TO WATER
FOLLOWING INSTALLATION (FT BGS) 498.2 (01/24/11)

DIAMETER OF BOREHOLE
16.75 (IN) FROM 0.0 TO 82.0 (FT BGS)
15.88 (IN) FROM 82.0 TO 140.0 (FT BGS)
14.00 (IN) FROM 140.0 TO 367.0 (FT BGS)
12.00 (IN) FROM 367.0 TO 565.0 (FT BGS)

SURFACE COMPLETION (proposed)
PROTECTIVE CASING
TYPE STEEL SIZE (IN) 10
PROTECTIVE POSTS INSTALLED YES
SURFACE SEAL AND PAD
CHECK FOR SETTLEMENT YES
PAD MATERIAL CONCRETE
REINFORCED WIRE MESH
PAD DIMENSIONS (FT) 10 (L) 10 (W) 0.5 (H)

SURFACE SEAL 3.0 TO 62.9 (FT BGS)

BENTONITE CHIP SEAL 62.9 TO 503.3 (FT BGS)

FINE SAND COLLAR 503.3 TO 505.3 (FT BGS)

FILTER PACK 505.3 TO 533.0 (FT BGS)

SCREENED INTERVAL 510.0 TO 531.1 (FT BGS)

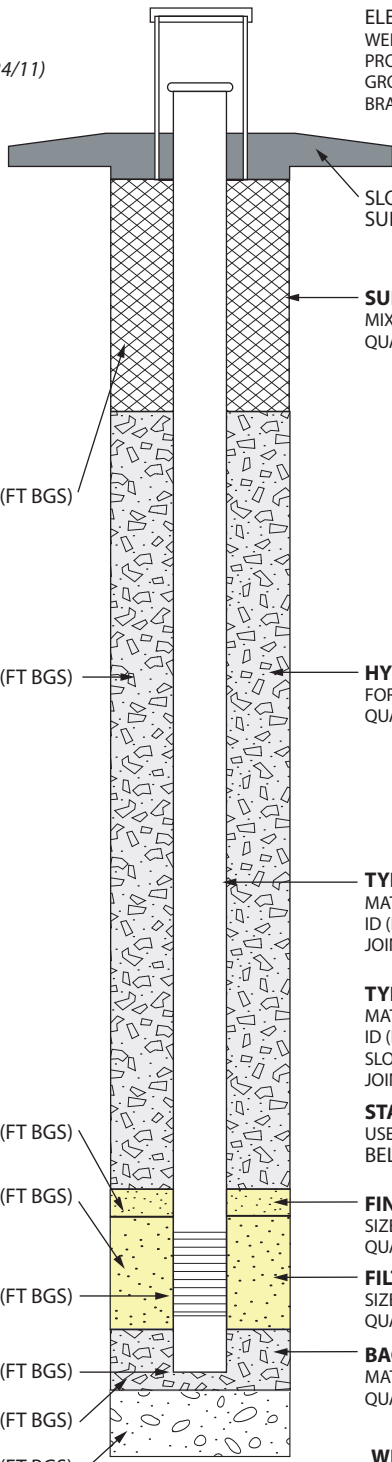
BOTTOM OF CASING 541.4 (FT BGS)

BACKFILL MATERIAL 533.0 TO 543.4 (FT BGS)

SLOUGH 543.4 TO 560.0 (FT BGS)

BOTTOM OF BORING 560.0 (FT BGS)

LOCKING COVER



ELEVATIONS (FT AMSL)
WELL CASING TBD
PROTECTIVE CASING TBD
GROUND SURFACE TBD
BRASS CAP (MARKER) TBD

SLOPED CONCRETE PAD/
SURFACE SEAL

SURFACE SEAL
MIX (WT%) CEMENT 100 BENTONITE 0
QUANTITY USED 117.6 FT³ CALC 81.9 FT³

HYDRATED BENTONITE SEAL
FORM 3/8-IN CHIP
QUANTITY USED 432.2 FT³ CALC 377.0 FT³

TYPE OF CASING
MATERIAL PASSIVATED A304 STAINLESS STEEL
ID (IN) 5.00 OD (IN) 5.56 (5%¹⁶)
JOINT TYPE THREADED/COUPLED

TYPE OF SCREEN(S)
MATERIAL A304 STAINLESS STEEL
ID (IN) 5.00 OD (IN) 5.88 (5%¹⁶)
SLOT SIZE (IN) 0.020
JOINT TYPE THREADED/COUPLED

STAINLESS-STEEL CENTRALIZERS
USED YES AT 2.0 ft ABOVE AND
BELOW WELL SCREEN

FINE SAND COLLAR
SIZE/TYPE 20/40 SILICA
QUANTITY USED 1.0 FT³ CALC 1.2 FT³

FILTER PACK SAND
SIZE/TYPE 10/20 SILICA
QUANTITY USED 17.0 FT³ CALC 17.4 FT³

BACKFILL MATERIAL
MATERIAL 3/8-IN BENTONITE CHIP
QUANTITY USED 3.4 FT³ CALC 5.5 FT³

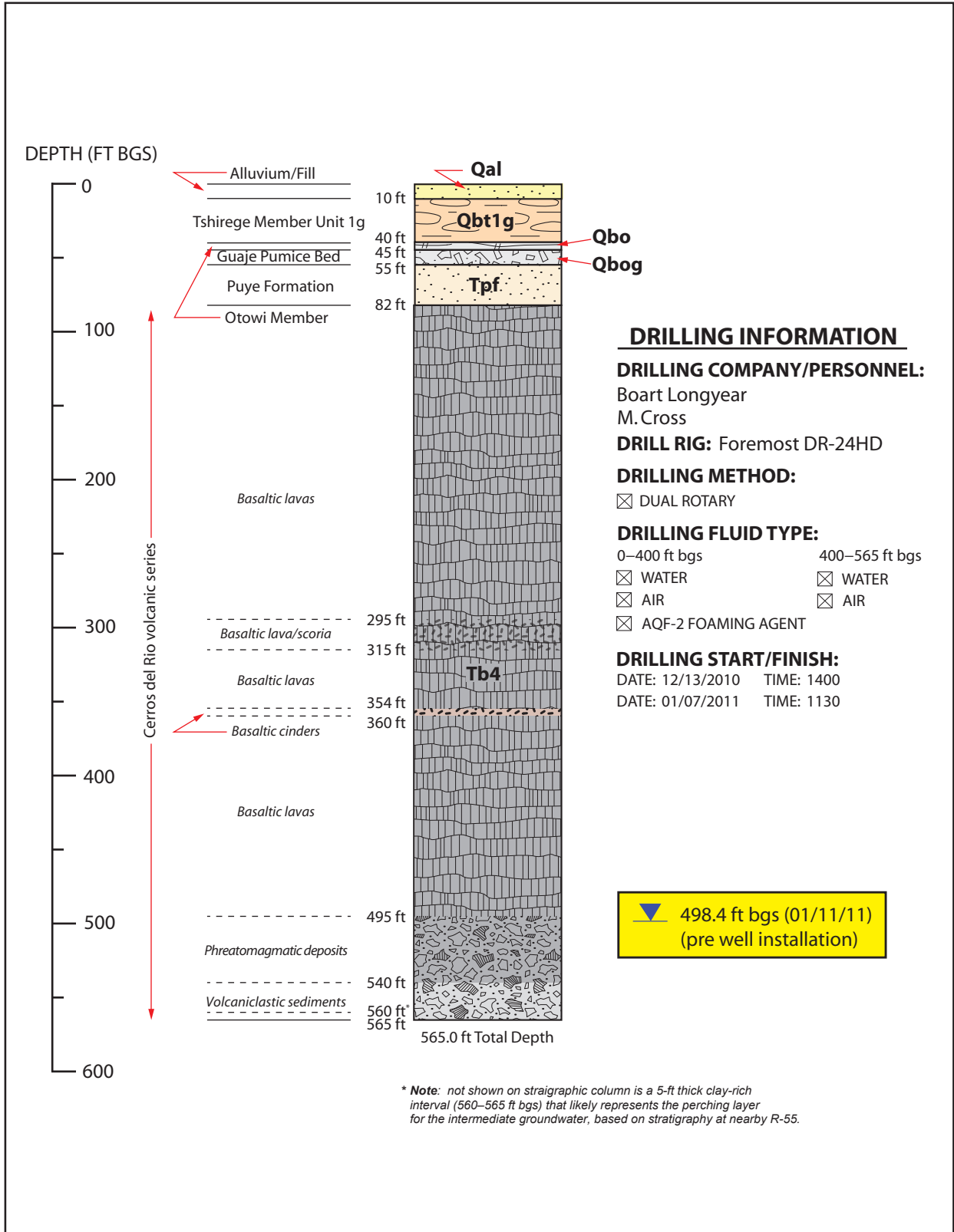
WELL COMPLETION BEGAN
DATE 01/11/11 TIME 1150
WELL COMPLETION FINISHED
DATE 01/18/11 TIME 1410



Drafted By: TPMC
Project Number: 80011
Date: January 27, 2011
File Name: R-55i_AsBuiltDiagram_FactSheet

Well R-55i As-Built Well Construction Diagram
Cañada del Buey, Technical Area 54 (TA-54)
Los Alamos National Laboratory
Los Alamos, New Mexico

Fact Sheet
NOT TO SCALE



* Note: not shown on stratigraphic column is a 5-ft thick clay-rich interval (560–565 ft bgs) that likely represents the perching layer for the intermediate groundwater, based on stratigraphy at nearby R-55.

		R-55i Borehole Stratigraphy Cañada del Buey (TA-54) Los Alamos National Laboratory Los Alamos, New Mexico	Fact Sheet NOT TO SCALE
Drafted By: TPMC Project Number: 80011	Date: January 26, 2011 Filename: R55i_Lithology_FactSheet		