

TOTAL LENGTH
OF CASING AND SCREEN (FT) 1081.6

DEPTH TO WATER
FOLLOWING INSTALLATION (FT BGS) 923.9 (07/26/10)

DIAMETER OF BOREHOLE
18.75 (IN) FROM 0.0 TO 196.1 (FT BGS)
16.75 (IN) FROM 196.1 TO 394.6 (FT BGS)
15.88 (IN) FROM 394.6 TO 705.0 (FT BGS)
12.75 (IN) FROM 705.0 TO 1087.0 (FT BGS)

SURFACE COMPLETION (proposed)
PROTECTIVE CASING
TYPE STEEL SIZE (IN) 16
PROTECTIVE POSTS INSTALLED TBD
SURFACE SEAL AND PAD
CHECK FOR SETTLEMENT TBD
PAD MATERIAL CONCRETE
REINFORCED WIRE MESH
PAD DIMENSIONS (FT) 10 (L) 10 (W) 0.5 (H)

SURFACE SEAL 3.0 TO 59.8 (FT BGS)

HYDRATED BENTONITE CHIP SEAL 59.8 TO 938.0 (FT BGS)

FINE SAND COLLAR 938.0 TO 940.1 (FT BGS)

FILTER PACK 940.1 TO 970.6 (FT BGS)

SCREENED INTERVAL 945.0 TO 965.6 (FT BGS)

BENTONITE SEAL 970.6 TO 1039.0 (FT BGS)

FINE SAND COLLAR 1039.0 TO 1041.4 (FT BGS)

FILTER PACK 1041.4 TO 1072.1 (FT BGS)

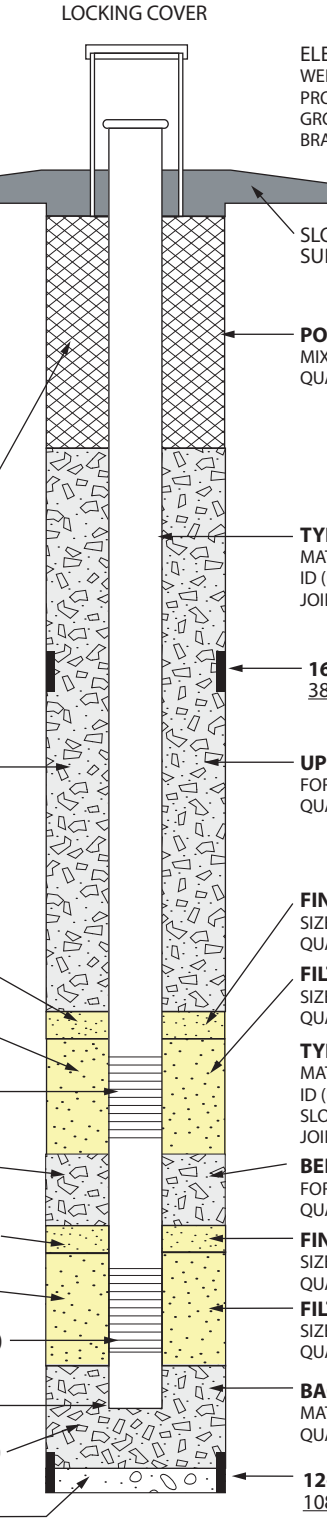
SCREENED INTERVAL 1046.6 TO 1067.1 (FT BGS)

BOTTOM OF CASING 1078.8 (FT BGS)

BACKFILL MATERIAL 1072.1 TO 1085.0 (FT BGS)

SLOUGH 1085.0 TO 1087.0 (FT BGS)

BOTTOM OF BORING 1087.0 (FT BGS)



ELEVATIONS (FT AMSL)
WELL CASING TBD
PROTECTIVE CASING TBD
GROUND SURFACE TBD
BRASS CAP (MARKER) TBD

PORTLAND CEMENT SEAL
MIX (WT%) CEMENT 100 BENTONITE NONE
QUANTITY USED 137.6 FT³ CALC 98.8 FT³

TYPE OF CASING
MATERIAL PASSIVATED A304 STAINLESS STEEL
ID (IN) 5.00 OD (IN) 5.56 (59/16)
JOINT TYPE THREADED/COUPLED

16-IN. CASING/SHOE
384.1 TO 394.6 (FT BGS)

UPPER BENTONITE SEAL
FORM 3/8 IN CHIP
QUANTITY USED 816.1 FT³ CALC 1047.0 FT³

FINE SAND COLLAR
SIZE/TYPE 20/40 SILICA
QUANTITY USED 1.5 FT³ CALC 1.5 FT³

FILTER PACK SAND
SIZE/TYPE 10/20 SILICA
QUANTITY USED 32.5 FT³ CALC 21.8 FT³

TYPE OF SCREEN(S)
MATERIAL A304 STAINLESS STEEL
ID (IN) 5.00 OD (IN) 5.88 (57/8)
SLOT SIZE (IN) 0.020
JOINT TYPE THREADED/COUPLED

BENTONITE SEAL
FORM 3/8 IN CHIP
QUANTITY USED 41.5 FT³ CALC 48.8 FT³

FINE SAND COLLAR
SIZE/TYPE 20/40 SILICA
QUANTITY USED 2.5 FT³ CALC 1.7 FT³

FILTER PACK SAND
SIZE/TYPE 10/20 SILICA
QUANTITY USED 30.2 FT³ CALC 22.0 FT³

BACKFILL MATERIAL
MATERIAL 3/8 IN BENTONITE CHIP
QUANTITY USED 6.7 FT³ CALC 10.2 FT³

12-IN. CASING/SHOE
1080.4 TO 1087.0 (FT BGS)

STAINLESS STEEL CENTRALIZERS
USED AT 2.0 ft ABOVE AND
BELOW WELL SCREENS

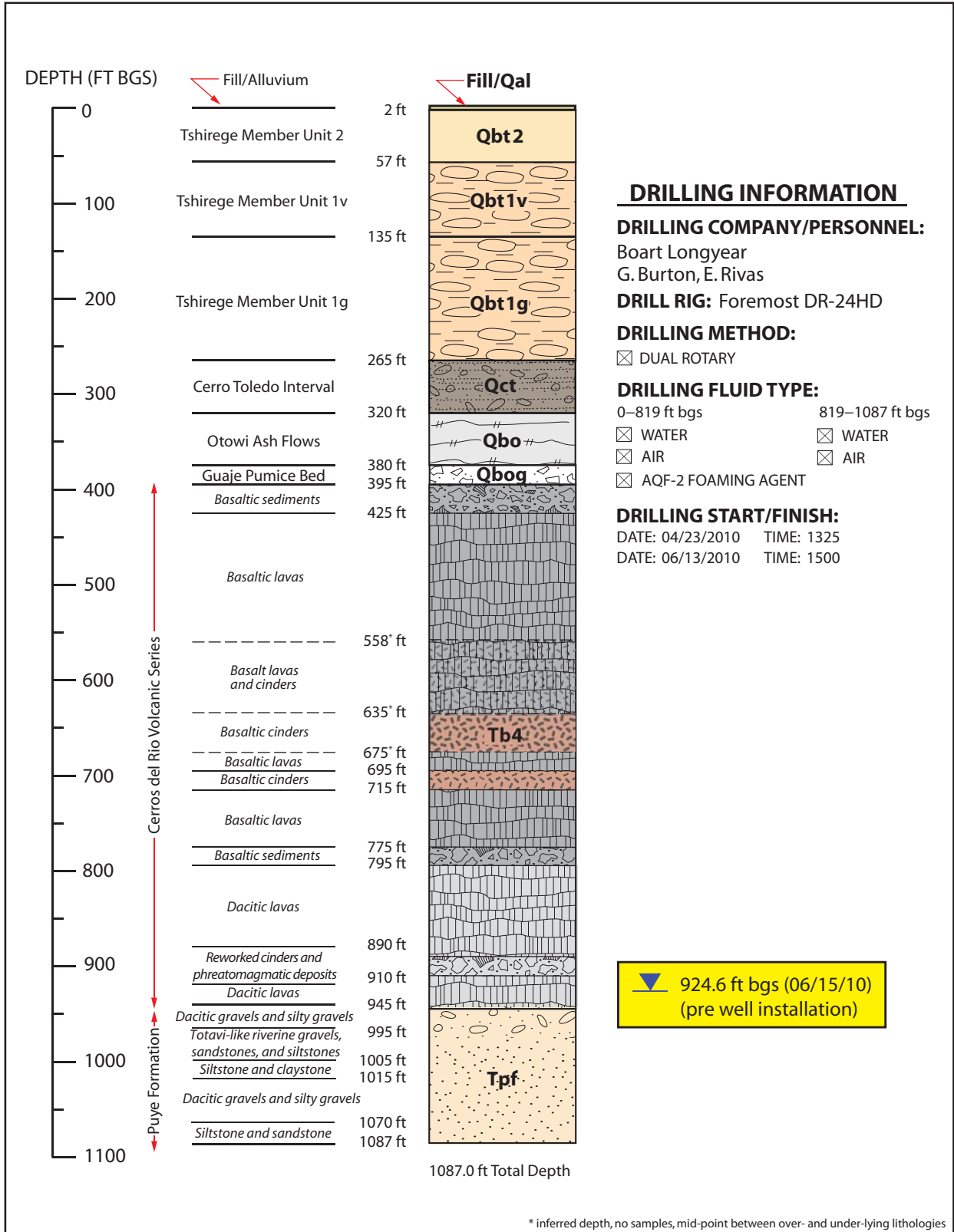
WELL COMPLETION BEGAN
DATE 06/23/10 TIME 1121
WELL COMPLETION FINISHED
DATE 07/19/10 TIME 0930



R-56 As-Built Well Construction Diagram
Technical Area 54 (TA-54)
Los Alamos National Laboratory
Los Alamos, New Mexico

FACT SHEET
NOT TO SCALE

Drafted By: TPMC
Project Number: 80077
Date: July 20, 2010
File Name: R-56_AsBuilt_FactSheet



		R-56 BOREHOLE STRATIGRAPHY Technical Area 54 (TA-54) Los Alamos National Laboratory Los Alamos, New Mexico	Fact Sheet NOT TO SCALE
Drafted By: TPMC Project Number: 80077	Date: July 20, 2010 Filename: R56_Lithology_FactSheet		