

LA-UR-10-04676

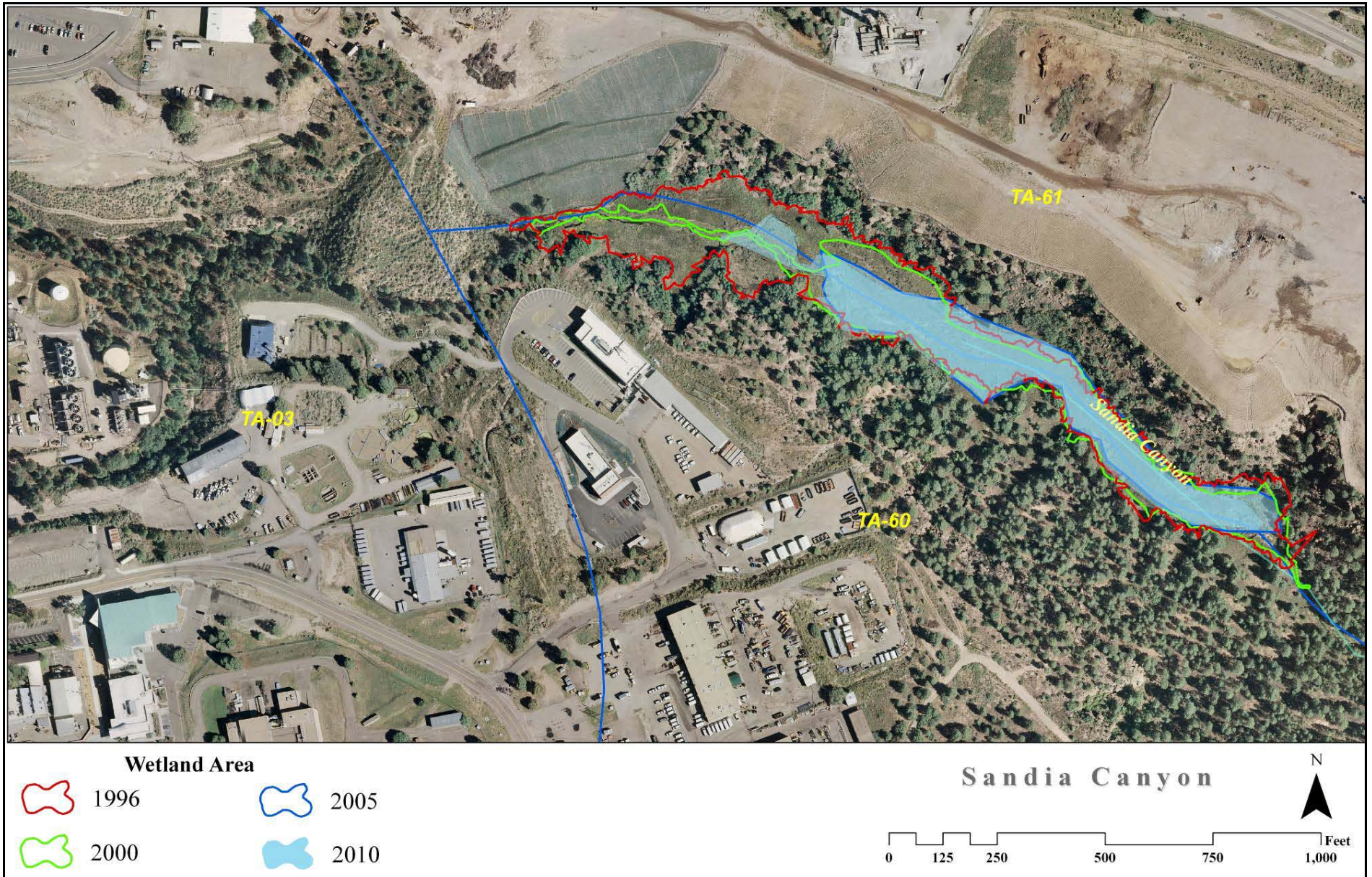
*Approved for public release;
distribution is unlimited.*

<i>Title:</i>	Comparative Photos of the Sandia Wetlands at TA-60 and TA-61 – 1990, 2000, & 2010
<i>Author(s):</i>	Charles D Hathcock, David C Keller, Kathryn D Bennett
<i>Intended for:</i>	Public



Los Alamos National Laboratory, an affirmative action/equal opportunity employer, is operated by the Los Alamos National Security, LLC for the National Nuclear Security Administration of the U.S. Department of Energy under contract DE-AC52-06NA25396. By acceptance of this article, the publisher recognizes that the U.S. Government retains a nonexclusive, royalty-free license to publish or reproduce the published form of this contribution, or to allow others to do so, for U.S. Government purposes. Los Alamos National Laboratory requests that the publisher identify this article as work performed under the auspices of the U.S. Department of Energy. Los Alamos National Laboratory strongly supports academic freedom and a researcher's right to publish; as an institution, however, the Laboratory does not endorse the viewpoint of a publication or guarantee its technical correctness.

The following map shows the history of wetland delineations from 1996, 2000, 2005, and 2010.





(Photo A) 1990 – Looking east from the outfall



(Photo A) 2000



(Photo A) 2010



(Photo B) 1990 – Looking southeast from the top of the wetland



(Photo B) 2000



(Photo B) 2010



(Photo C) 1990 – Looking south across the upper wetlands



(Photo C) 2000



(Photo C) 2010



(Photo D) 1990 – Looking southeast across the upper wetlands



(Photo D) 2000



(Photo D) 2010



(Photo E) 1990 – Looking west across the upper wetlands



(Photo E) 2000



(Photo E) 2010



(Photo F) 1990 – Looking west



(Photo F) 2000



(Photo F) 2010



(Photo G) 1990 – Looking west



(Photo G) 2000



(Photo G) 2010



(Photo H) 1990 – Looking east



(Photo H) 2000



(Photo H) 2010



(Photo I) 1990 – Looking south



(Photo I) 2000



(Photo I) 2010



(Photo J) 1990 – Looking south



(Photo J) 2000



(Photo J) 2010



(Photo K) 1990 – Looking northwest



(Photo K) 2000



(Photo K) 2010



(Photo L) 1990 – Looking west



(Photo L) 2000



(Photo L) 2010



(Photo M) 1990 – Looking north across the middle section of the wetlands



(Photo M) 2000



(Photo M) 2010



(Photo N) 1990 – Looking west across the middle section of the wetlands



(Photo N) 2000



(Photo N) 2010



(Photo O) 1990 – Looking northwest



(Photo O) 2000



(Photo O) 2010



(Photo P) 1990 – Looking west



(Photo P) 2000



(Photo P) 2010



(Photo Q) 1990 – Looking southwest



(Photo Q) 2000



(Photo Q) 2010

Notes

In 1990, the photos were taken by Terry Foxx in July using a 35mm camera with slide film. The slides were scanned into digital in 2000 with a slide scanner. In 2000, the photos were taken by Chuck Hathcock and Brandon Pearson on November 1st using an Olympus Camedia C-2500L point and shoot digital camera. In 2010, the photos were taken by Chuck Hathcock and David Keller in June using a Canon PowerShot S5IS point and shoot digital camera.