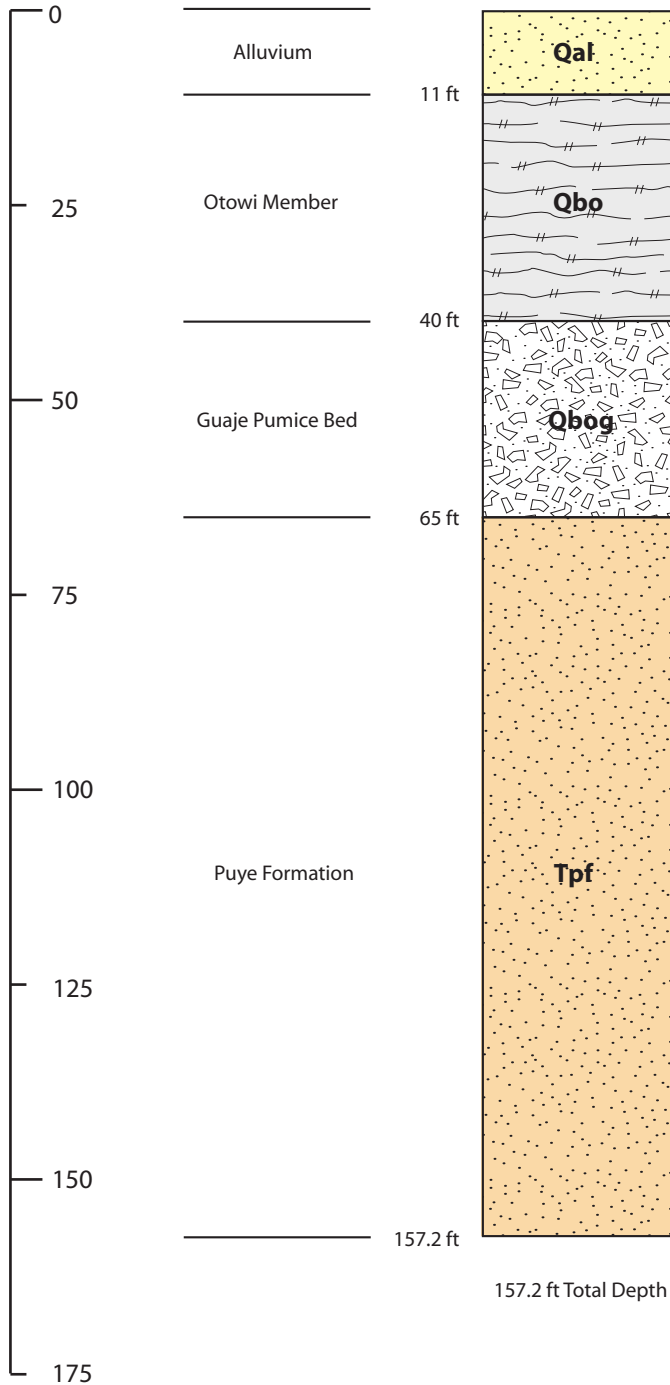


DEPTH (FT BGS)



DRILLING INFORMATION

DRILLING COMPANY/PERSONNEL:

Boart Longyear
D. Stevenson

DRILL RIG: Foremost DR-24

DRILLING METHOD:

DUAL ROTARY

DRILLING FLUID TYPE:

0-157.2 ft bgs

WATER

AIR

DRILLING START/FINISH:

DATE: 02/09/2010 TIME: 1446

DATE: 02/12/2010 TIME: 1420

▼ 98.3 ft bgs (03/05/10)
(post well installation)



Drafted By: TPMC
Project Number: 80056

Date: March 29, 2010
Filename: TW-2Ar_Lithology_FactSheet

WELL SUMMARY DATA SHEET
TW-2Ar Borehole Stratigraphy
Pueblo Canyon
Los Alamos National Laboratory
Los Alamos, New Mexico

FACT SHEET
NOT TO SCALE

TOTAL LENGTH OF CASING AND SCREEN (FT) 116.7
 DEPTH TO WATER FOLLOWING INSTALLATION (FT BGS) 98.3 (03/05/10)
 DIAMETER OF BOREHOLE 12.5 (IN) FROM 0.0 TO 157.2 (FT BGS)

ELEVATIONS (FT AMSL)
 WELL CAP TBD
 PROTECTIVE CASING TBD
 GROUND SURFACE TBD
 MONUMENT MARKER TBD

SURFACE COMPLETION

PROTECTIVE CASING
 TYPE STEEL SIZE (IN) 10
 PROTECTIVE POSTS INSTALLED YES
 SURFACE SEAL AND PAD
 CHECK FOR SETTLEMENT YES
 PAD MATERIAL CONCRETE
 REINFORCED WIRE MESH
 PAD DIMENSIONS (FT) 10 (L) 10 (W) 0.5 (H)

SLOPED CONCRETE PAD/
 SURFACE PAD

SURFACE SEAL
 MIX (WT%) CEMENT 100% ADDITIVE NONE
 QUANTITY USED 50.0 FT³ CALC 33.4 FT³

TYPE OF CASING
 MATERIAL PASSIVATED A304 STAINLESS STEEL
 ID (IN) 4.50 (5¹/₂) OD (IN) 5.00 (5)
 JOINT TYPE THREADED/COUPLED

SURFACE SEAL 3.0 TO 50.0 (FT BGS)

HYDRATED BENTONITE CHIP SEAL 50.0 TO 95.0 (FT BGS)

HYDRATED BENTONITE SEAL
 FORM 3/8-IN CHIP
 QUANTITY USED (DRY) 30.2 FT³ CALC 32.0 FT³

FINE SAND COLLAR 95.0 TO 97.2 (FT BGS)

FINE SAND COLLAR
 SIZE/TYPE 20/40 SILICA
 QUANTITY USED 2.0 FT³ CALC 1.6 FT³

FILTER PACK 97.2 TO 114.4 (FT BGS)

FILTER PACK SAND
 SIZE/TYPE 10/20 SILICA
 QUANTITY USED 15.8 FT³ CALC 12.3 FT³

SCREENED INTERVAL 102.0 TO 112.0 (FT BGS)

TYPE OF SCREEN
 MATERIAL A304 STAINLESS STEEL
 ID (IN) 4.88 (4⁷/₈) OD (IN) 5.25 (5¹/₄)
 SLOT SIZE (IN) 0.020
 JOINT TYPE THREADED/COUPLED

BOTTOM OF CASING 113.9 (FT BGS)

BENTONITE SEAL 114.4 TO 157.2 (FT BGS)

BENTONITE SEAL
 FORM 3/8-IN CHIP
 QUANTITY USED (DRY) 36.8 FT³ CALC 36.4 FT³

BOTTOM OF BORING 157.2 (FT BGS)

12-IN CASING/SHOE
150.0 TO 156.5 (FT BGS)

STAINLESS-STEEL CENTRALIZERS
 USED YES AT 2.0 ft ABOVE AND BELOW WELL SCREENS

WELL COMPLETION BEGAN
 DATE 02/16/10 TIME 1630
WELL COMPLETION FINISHED
 DATE 03/04/10 TIME 1250



Drafted By: TPMC
 Project Number: 80056
 Date: March 29, 2010
 File Name: TW2Ar_AsBuilt_FactSheet

TW-2Ar As-Built Well Construction Diagram

Pueblo Canyon
 Los Alamos National Laboratory
 Los Alamos, New Mexico

Fact Sheet

NOT TO SCALE