

TOTAL LENGTH  
OF CASING AND SCREEN (FT) 661.8 (UNTRIMMED)

DEPTH TO WATER  
FOLLOWING INSTALLATION (FT BGS) 627.9 (12/03/09, 0144)

DIAMETER OF BOREHOLE  
16.75 (IN) FROM 0.0 TO 395.0 (FT BGS)  
12.75 (IN) FROM 395.0 TO 803.0 (FT BGS)

**SURFACE COMPLETION (PROPOSED)**

PROTECTIVE CASING  
TYPE STEEL SIZE (IN) 10  
PROTECTIVE POSTS INSTALLED YES

SURFACE SEAL AND PAD  
CHECK FOR SETTLEMENT YES  
PAD MATERIAL CONCRETE  
REINFORCED WIRE MESH  
PAD DIMENSIONS (FT) 10 (L) 10 (W) 0.5 (H)

**SURFACE SEAL** 3.0 TO 457.9 (FT BGS)

**BENTONITE SEAL** 457.9 TO 624.0 (FT BGS)  
(CHIPS 457.9 TO 612.4,  
PELLETS 612.4 TO 624.0)

**FINE SAND COLLAR** 624.0 TO 625.9 (FT BGS)

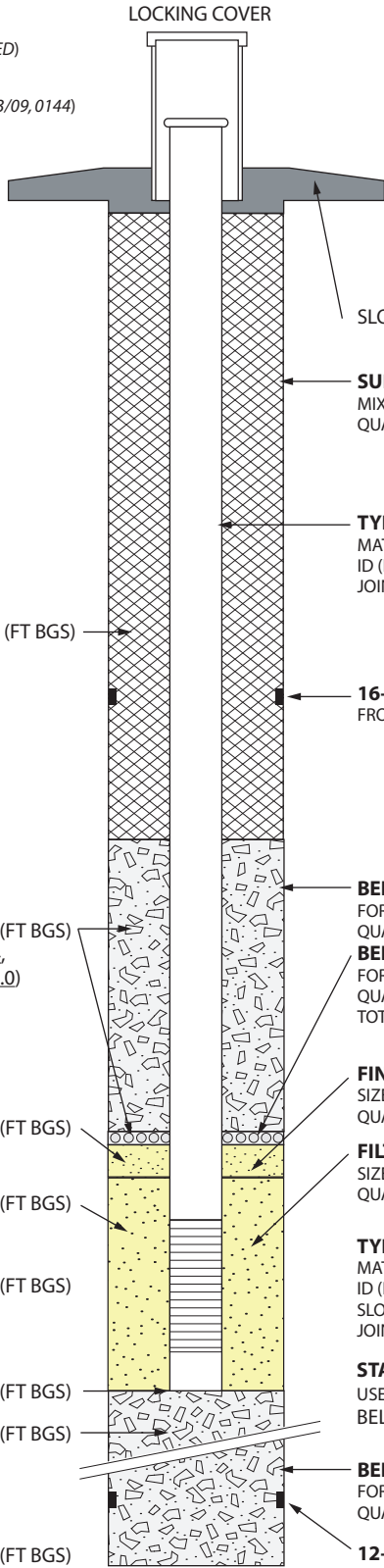
**FILTER PACK** 625.9 TO 657.8 (FT BGS)

**SCREENED INTERVAL** 632.0 TO 652.5 (FT BGS)

**BOTTOM OF CASING** 657.8 (FT BGS)

**BACKFILL** 657.8 TO 803.0 (FT BGS)

**BOTTOM OF BORING** 803.0 (FT BGS)



ELEVATIONS (FT AMSL)  
WELL CAP TBD  
PROTECTIVE CASING TBD  
GROUND SURFACE TBD  
MONUMENT MARKER TBD

**WELL COMPLETION BEGAN**  
DATE 11/06/09 TIME 2130  
**WELL COMPLETION FINISHED**  
DATE 12/02/09 TIME 0410

SLOPED CONCRETE PAD/SURFACE

**SURFACE SEAL**  
MIX (WT%) CEMENT 100  
QUANTITY USED 795.5 FT<sup>3</sup> CALC 583.0 FT<sup>3</sup>

**TYPE OF CASING**  
MATERIAL STAINLESS-STEEL  
ID (IN) 5.00 OD (IN) 5.56 (5<sup>9</sup>/<sub>16</sub>)  
JOINT TYPE THREADED/COUPLED

**16-IN CASING/SHOE**  
FROM 388.7 TO 395.0 (FT BGS)

**BENTONITE SEAL (UPPER PORTION)**  
FORM 3/8 IN CHIP  
QUANTITY USED CHIPS 93.7 FT<sup>3</sup>

**BENTONITE SEAL (LOWER PORTION)**  
FORM 1/4 IN PELLETS  
QUANTITY USED PELLETS 8.0 FT<sup>3</sup>  
TOTAL BENTONITE USED 101.7 FT<sup>3</sup> CALC 121.2 FT<sup>3</sup>

**FINE SAND COLLAR**  
SIZE/TYPE 20/40 SILICA  
QUANTITY USED 1.5 FT<sup>3</sup> CALC 1.5 FT<sup>3</sup>

**FILTER PACK SAND**  
SIZE/TYPE 10/20 SILICA  
QUANTITY USED 34.5 FT<sup>3</sup> CALC 23.3 FT<sup>3</sup>

**TYPE OF SCREEN**  
MATERIAL STAINLESS-STEEL  
ID (IN) 5.00 OD (IN) 5.88 (5<sup>7</sup>/<sub>8</sub>)  
SLOT SIZE (IN) 0.020  
JOINT TYPE THREADED/COUPLED

**STAINLESS-STEEL CENTRALIZERS**  
USED YES AT 2.0 ft ABOVE AND  
BELOW WELL SCREEN

**BENTONITE BACKFILL**  
FORM 3/8 IN CHIP  
QUANTITY USED 121.4 FT<sup>3</sup> CALC 106.7 FT<sup>3</sup>

**12-IN CASING/SHOE**  
FROM 675.0 TO 678.0 (FT BGS)



Drafted By: TPMC  
Project Number: 80055

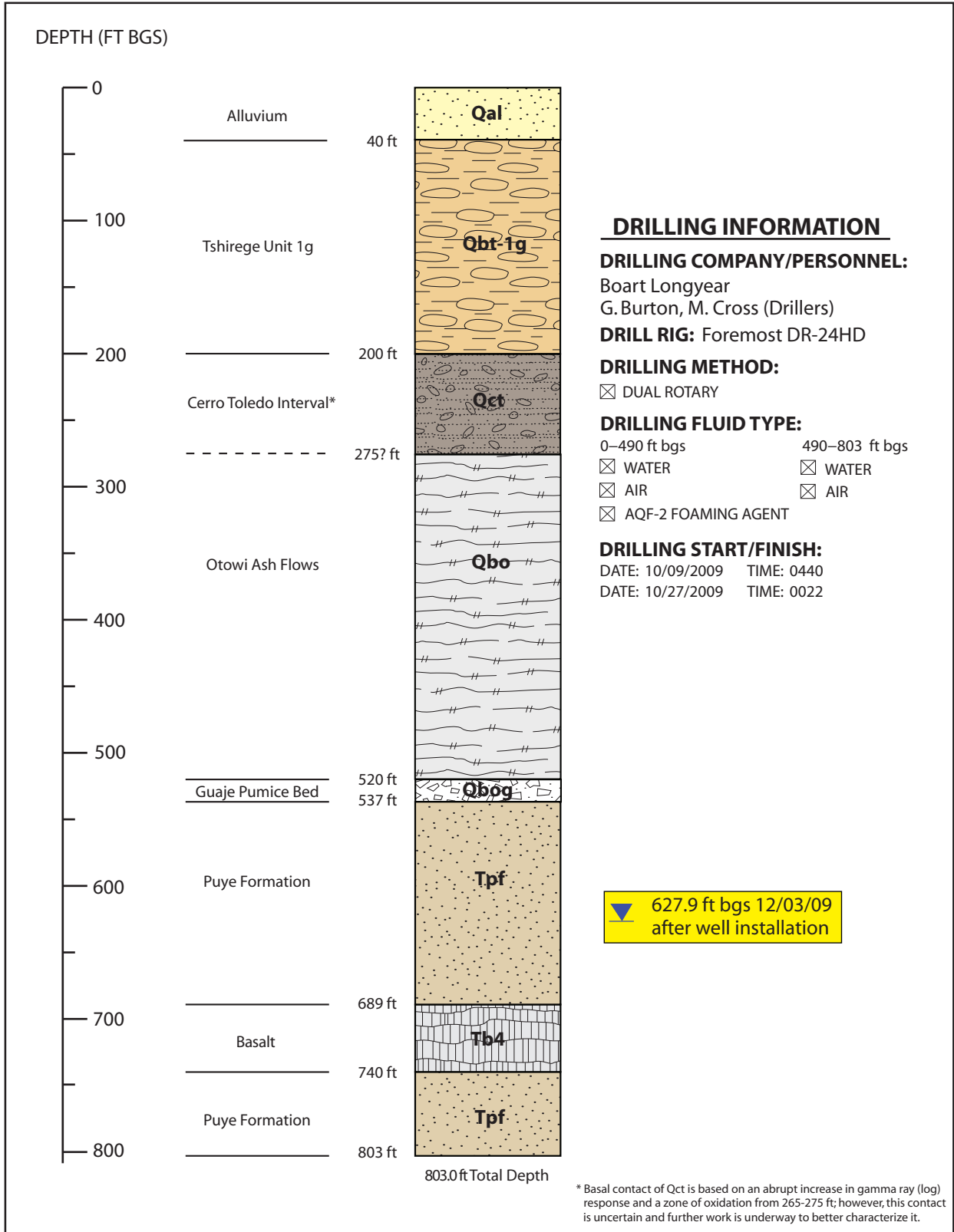
Date: December 16, 2009  
File Name: CdV37-1i\_AsBuilt\_FactSheet

**WELL CDV-37-1i AS-BUILT WELL CONSTRUCTION**

Canyon de Valle/Water Canyon Confluence  
Los Alamos National Laboratory  
Los Alamos, New Mexico

**Fact Sheet**

NOT TO SCALE



		<b>CdV-37-1i BOREHOLE STRATIGRAPHY</b> Canyon de Valle/Water Canyon Confluence (TA-15) Los Alamos National Laboratory Los Alamos, New Mexico	<b>FACT SHEET</b> NOT TO SCALE
Drafted By: TPMC Project Number: 80055	Date: December 16, 2009 Filename: CdV37-1i_Lithology_FactSheet		