

Los Alamos National Laboratory Trails

Open Sunrise to Sunset
Use trails at own risk!



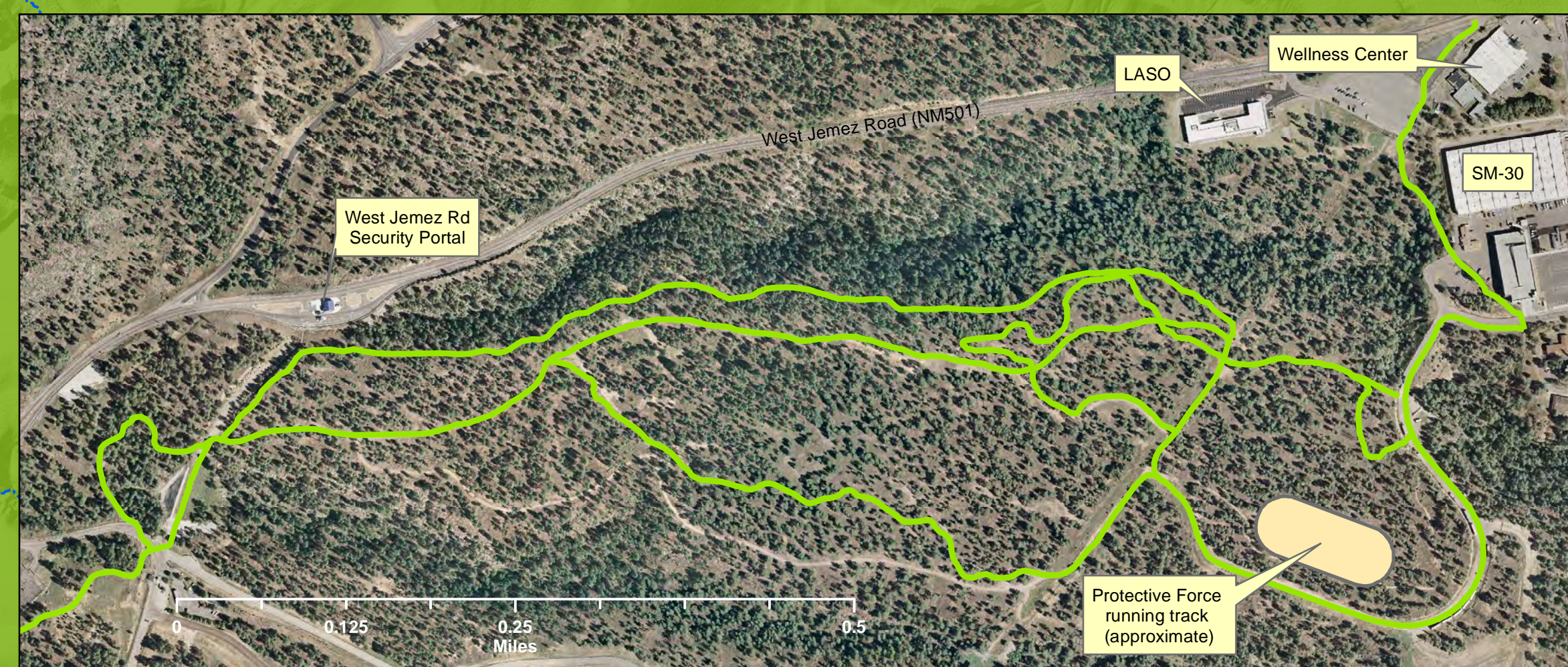
Please:
Be courteous
Treat trails gently
Yield to equestrians
Control your animals
Stay on marked trails

Do not disturb or remove archaeological resources
Use of alcohol or illegal drugs is prohibited

Report illegal, unusual or suspicious activities to
Emergency Operations and Management at 667-6211

General Inquiries, Observations
or Concerns Contact trails@lanl.gov

Emergencies: Call 911



Santa Fe National Forest
(Consult USFS for trail
conditions and maps)

Santa Fe National Forest
(Consult USFS for trail
conditions and maps)

Pajarito Mountain
Ski Area

Los Alamos

San Ildefonso Pueblo
(Access Restricted)

Bandelier National Monument
Tsankawi Unit

San Ildefonso Pueblo
(Access Restricted)

Bandelier National Monument
(Consult National Park Service
for trail conditions and maps)

White Rock

Santa Fe National Forest

- - - Closed Trail (No Public Access)
- Controlled Access Trail
- Open Trail
- - - Drainage or intermittent stream
- Rio Grande
- Dirt Road
- Paved Road
- Structure
- TA Boundary

Land Ownership

- Bandelier National Monument
- Bureau of Land Management
- Pueblo (Access Restricted)
- Department of Energy
- Private/County
- US Forest Service
- Valles Caldera National Preserve

**Trails In and Around
Los Alamos National Laboratory**

Map Created By: Brad McKown, EP-ETER GIS Team, July 21, 2010, Map# 09-009-01

NOTE: Trails portrayed on this map may vary in actual location, alignment, and condition.
Do not use this map as a trail guide for orientation.
Always check with local sources who are knowledgeable about
current trail conditions prior to using trails.

LA-UR-09-05895

