

TOTAL LENGTH OF CASING AND SCREEN (FT) 536.2  
 DEPTH TO WATER FOLLOWING INSTALLATION (FT BGS) 508.0 (04/11/09)

ELEVATIONS (FT AMSL)  
 WELL CAP TBD  
 PROTECTIVE CASING TBD  
 GROUND SURFACE TBD  
 MONUMENT MARKER TBD

DIAMETER OF BOREHOLE  
16.75 (IN) FROM 0.0 TO 292.9 (FT BGS)  
12.75 (IN) FROM 292.9 TO 566.0 (FT BGS)

**SURFACE COMPLETION (PROPOSED)**  
 PROTECTIVE CASING  
 TYPE STEEL SIZE (IN) 10  
 PROTECTIVE POSTS INSTALLED YES  
 SURFACE SEAL AND PAD  
 CHECK FOR SETTLEMENT YES  
 PAD MATERIAL CONCRETE  
 REINFORCED WIRE MESH  
 PAD DIMENSIONS (FT) 10 (L) 10 (W) 0.5 (H)

**SURFACE SEAL**  
 MIX (WT%) CEMENT 98 BAROID IDP-381 ADDITIVE 2  
 QUANTITY USED 113.6 FT<sup>3</sup> CALCULATED 98.5 FT<sup>3</sup>

**SURFACE SEAL** 3.0 TO 74.9 (FT BGS)

**TYPE OF CASING**  
 MATERIAL STAINLESS-STEEL  
 ID (IN) 5.00 OD (IN) 5.56 (5 9/16)  
 JOINT TYPE THREADED/COUPLED

**HYDRATED BENTONITE CHIP SEAL** 74.9 TO 505.4 (FT BGS)

**HYDRATED BENTONITE SEAL**  
 FORM CHIP  
 QUANTITY USED 379.2 FT<sup>3</sup> CALCULATED 448.7 FT<sup>3</sup>

**16 IN SHOE/CASING**  
 286.2 TO 292.9 FT BGS

**FINE SAND COLLAR** 505.4 TO 506.5 (FT BGS)

**FINE SAND COLLAR**  
 SIZE/TYPE 20/40 SILICA  
 QUANTITY USED 2.0 FT<sup>3</sup> CALCULATED 0.8 FT<sup>3</sup>

**FILTER PACK** 506.5 TO 525.5 (FT BGS)

**FILTER PACK SAND**  
 SIZE/TYPE 10/20 SILICA  
 QUANTITY USED 20.0 FT<sup>3</sup> CALCULATED 13.5 FT<sup>3</sup>

**SCREENED INTERVAL** 512.0 TO 522.0 (FT BGS)

**TYPE OF SCREEN**  
 MATERIAL STAINLESS-STEEL  
 ID (IN) 5.00 OD (IN) 5.88 (5 7/8)  
 SLOT SIZE (IN) 0.020 JOINT TYPE THREADED/COUPLED

**BENTONITE SEAL** 525.5 TO 533.5 (FT BGS)

**BENTONITE SEAL**  
 FORM 3/8 IN CHIP  
 QUANTITY USED 5.4 FT<sup>3</sup> CALCULATED 5.7 FT<sup>3</sup>

**BOTTOM OF CASING** 533.3 (FT BGS)

**BACKFILL MATERIAL**  
 MATERIAL 10/20 SILICA SAND  
 QUANTITY USED 2.0 FT<sup>3</sup> CALCULATED 2.1 FT<sup>3</sup>

**BACKFILL MATERIAL** 533.5 TO 535.8 (FT BGS)

**BACKFILL MATERIAL**  
 MATERIAL 3/8 IN BENTONITE CHIPS  
 QUANTITY USED 20.1 FT<sup>3</sup> CALCULATED 21.6 FT<sup>3</sup>

**BACKFILL MATERIAL** 535.8 TO 560.4 (FT BGS)

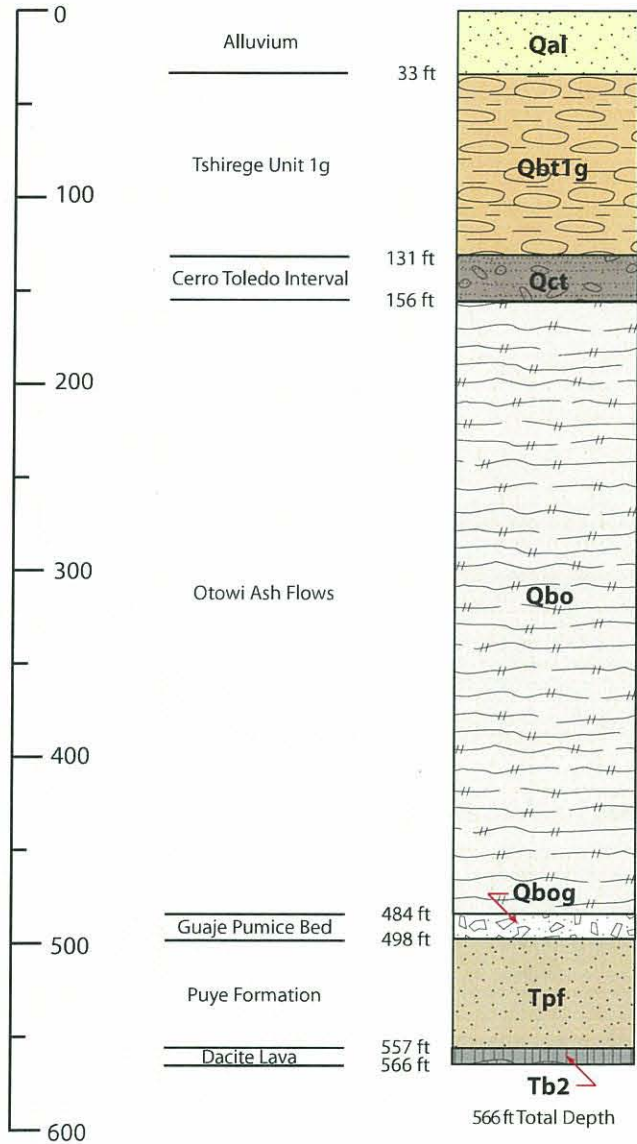
**12 IN SHOE/CASING**  
 560.0 TO 566.0 FT BGS

**SLOUGH** 560.4 TO 566.0 (FT BGS)

**STAINLESS-STEEL CENTRALIZERS**  
 USED YES AT 2.0 FT ABOVE AND BELOW WELL SCREEN

**WELL COMPLETION BEGAN**  
 DATE 03/31/09 TIME 1140  
**WELL COMPLETION FINISHED**  
 DATE 04/10/09 TIME 1415

DEPTH (FT BGS)



**DRILLING INFORMATION**

**DRILLING COMPANY/PERSONNEL:**

Boart Longyear  
E. Johnson, E. Rivas

**DRILL RIG:** Foremost DR-24HD

**DRILLING METHOD:**

DUAL ROTARY

**DRILLING FLUID TYPE:**

0-392.0 ft bgs                      392.0-566.0 ft bgs

WATER                               WATER

AIR                                         AIR

AQF-2 FOAMING AGENT

**DRILLING START/FINISH:**

DATE: 03/13/2009    TIME: 1315

DATE: 03/23/2009    TIME: 1640

508.0 ft bgs 04/11/09  
after well installation



Drafted By: TPMC  
Project Number: 80002

Date: April 28, 2009  
Filename: PCI-2\_Lithology\_FactSheet\_r2

**PCI-2 BOREHOLE STRATIGRAPHY**

Pajarito Canyon (TA-15)  
Los Alamos National Laboratory  
Los Alamos, New Mexico

**FACT SHEET**  
NOT TO SCALE