

# Technical Area (TA) 54

**EXPLANATION OF PROCESS CODE LISTINGS  
AND DESIGN CAPACITIES AT TECHNICAL AREA (TA) 54, AREA L**

Description	Capacity (gallons)	Associated Structure Nos./Area	Co-Operator
<b><u>Item 6, Line 9 S01 Container Storage Units</u></b>			
Container storage within the fenced portion of Area L (for RCRA <sup>1</sup> -regulated waste)	407,880	TA-54-31, TA-54-32, TA-54-35, TA-54-36, TA-54-39, TA-54-58, TA-54-68, TA-54-69, TA-54-70, and TA-54- 215	DOE/N3B
<b>TOTAL S01</b>	<b>407,880</b>		

<sup>1</sup> RCRA is the Resource Conservation and Recovery Act.

**EXPLANATION OF PROCESS CODE LISTINGS  
AND DESIGN CAPACITIES AT TECHNICAL AREA (TA) 54, AREA L  
(Continued)**

Description	Capacity (gallons per day)	Associated Structure Nos./Area	Co-Operator
<b><u>Item 6, Line 10 T04 Treatment - Other</u></b>			
Macroencapsulation process for RCRA <sup>1</sup> - regulated waste	23,160	Within the fenced portion of Area L, including TA-54-31, TA-54-32, TA-54-35, TA-54-36, TA-54-39, TA-54-58, TA-54-68, TA-54-69, TA-54-70, and TA-54-215	DOE/N3B
<b>TOTAL T04</b>	<b>23,160</b>		

<sup>1</sup> RCRA is the Resource Conservation and Recovery Act.

**EXPLANATION OF PROCESS CODE LISTINGS  
AND DESIGN CAPACITIES AT TECHNICAL AREA (TA) 54, AREA L  
(Continued)**

Description	Capacity (cubic yards)	Associated Structure No./Area	Co-Operator
<b><u>Item 6, Line 11 D80</u></b> <b><u>Landfill</u></b>	1,200	Area L	DOE/N3B
Area L Landfill <sup>1</sup> (This unit consists of Impoundments B and D and Shafts 1, 13-17, and 19-34)			
<b>TOTAL D80</b>	<b>1,200</b>		

---

<sup>1</sup> To be closed in accordance with Code of Federal Regulations (CFR), Title 40, Part 265, Subpart G, requirements. Permitted status is not requested.

**EXPLANATION OF PROCESS CODE LISTINGS  
AND DESIGN CAPACITIES AT TECHNICAL AREA (TA) 54, AREA L  
(Continued)**

Description	Capacity (gallons)	Associated Structure Nos./Area	Co-Operator
<b><u>Item 6, Line 12 S99 Other Storage</u></b>			
Container Storage Unit (below ground) Shaft Nos. 36 and 37 (for RCRA <sup>1</sup> -regulated waste) <sup>2</sup> (Undergoing Closure)	600	Area L	DOE/N3B
<b>TOTAL S99</b>	<b>600</b>		

<sup>1</sup> RCRA is the Resource Conservation and Recovery Act.

<sup>2</sup> Shaft nos. 36 and 37 to be closed in accordance with Code of Federal Regulations (CFR), Title 40, Part 265, Subpart G, requirements. Permitted status is not requested.

**EXPLANATION OF PROCESS CODE LISTINGS  
AND DESIGN CAPACITIES AT TECHNICAL AREA (TA) 54, AREA G**

Description	Capacity (gallons)	Associated Structure Nos./Area	Co-Operator
<b><u>Item 6, Line 13 S01 Container Storage Units</u></b>			
Container storage unit (Pad No.1) for RCRA <sup>1</sup> -regulated waste	502,920	TA-54-412	DOE/N3B
Container storage unit (Pad No. 10, consolidated Pad Nos. 2 and 4) for RCRA <sup>1</sup> -regulated waste	159,770	TA-54-0438 (Source Storage Trailer), TA-54-0498 (LANL HENC), TA-54-0545 and 0546 (Storage Trailers), and TA-54-0547 (Super HENC).	DOE/N3B
Container storage unit (Pad No. 3) for RCRA <sup>1</sup> -regulated waste	213,840	TA-54-48	DOE/N3B
Container storage unit (consolidated Pad No. 5, formerly Pad Nos. 5, 7, and 8) for RCRA <sup>1</sup> -regulated waste	623,480	TA-54-49, TA-54-144, TA-54-145, TA-54-146, TA-54-177, TA-54-224, TA-54-1027, TA-54-1028, TA-54-1030, and TA-54-1041	DOE/N3B
Container storage unit (Pad No. 6) for RCRA <sup>1</sup> -regulated waste	597,300	TA-54-153, TA-54-283, and TA-54-491	DOE/N3B
Container storage unit (Pad No. 9) for RCRA <sup>1</sup> -regulated waste	1,446,720	TA-54-229, TA-54-230, TA-54-231, and TA-54-232	DOE/N3B
Container storage unit (Pad No. 11) for RCRA <sup>1</sup> -regulated waste	682,440	TA-54-375	DOE/N3B
Container storage unit for RCRA <sup>1</sup> -regulated waste	11,880	TA-54-8	DOE/N3B
Container storage unit for RCRA <sup>1</sup> -regulated waste	108,240	TA-54-33	DOE/N3B
<b>TOTAL S01</b>	<b>4,346,590</b>		

<sup>1</sup> RCRA is the Resource Conservation and Recovery Act.

**EXPLANATION OF PROCESS CODE LISTINGS  
AND DESIGN CAPACITIES AT TECHNICAL AREA (TA) 54, AREA G  
(Continued)**

Description	Capacity (gallons per day)	Associated Structure Nos./Area	Co-Operator
<b><u>Item 6, Line 14 T04</u></b>			
<b><u>Treatment- Other</u></b>			
Macroencapsulation process for RCRA <sup>1</sup> - regulated waste	185, 280	Within container storage units at Pad Nos. 10, 3, 5, 6, 9 and 11; and including TA-54-412, TA-54- 48, TA-54-49, TA-54-224, TA-54- 153, TA-54-283, TA-54-229, TA- 54-230, TA-54-231, TA-54-232, TA-54-375, and TA-54-33	DOE/N3B
<b>TOTAL T04</b>	<b>185,280</b>		

<sup>1</sup> RCRA is the Resource Conservation and Recovery Act.

**EXPLANATION OF PROCESS CODE LISTINGS  
AND DESIGN CAPACITIES AT TECHNICAL AREA (TA) 54, AREA G  
(Continued)**

Description	Capacity (cubic yards)	Associated Structure No./Area	Co-Operator
<b><u>Item 6, Line 15 S01 Container Storage Unit</u></b>			
Container Storage Unit (below ground) Shaft Nos. 145 and 146 (Undergoing closure) <sup>1</sup>	4,950	Area G	DOE/N3B
<b>TOTAL S01</b>	<b>4,950</b>		

<sup>1</sup> To be closed in accordance with Code of Federal Regulations (CFR), Title 40, Part 265, Subpart G, requirements. Permitted status is not requested.



**EXPLANATION OF PROCESS CODE LISTINGS  
AND DESIGN CAPACITIES AT TECHNICAL AREA (TA) 54, AREA G  
(Continued)**

Description	Capacity (cubic yards)	Associated Structure No./Area	Co-Operator
<b><u>Item 6, Line 16 D80</u></b>			
<b><u>Landfill</u></b>			
Area G Landfill <sup>1</sup> (This unit includes Shaft 124 and Pit 29)	14	Area G	DOE/N3B
<b>TOTAL D80</b>	<b>14</b>		

<sup>1</sup> To be closed in accordance with Code of Federal Regulations (CFR), Title 40, Part 265, Subpart G, requirements. Permitted status is not requested.

**EXPLANATION OF PROCESS CODE LISTINGS  
AND DESIGN CAPACITIES AT TECHNICAL AREA (TA) 54 WEST**

Description	Capacity (gallons)	Associated Structure No./Area	Co-Operator
<b><u>Item 6, Line 17 S01 Container Storage Units</u></b>			
Container storage unit for RCRA <sup>1</sup> -regulated waste	4,950	TA-54-38 Indoor. Includes High Bay, and Low Bay	DOE/Triad
Container storage unit for RCRA <sup>1</sup> -regulated waste	29,160	TA-54-38, Outdoor Pad. Includes Loading Dock and Pad	DOE/Triad
Container storage unit for RCRA <sup>1</sup> -regulated waste (excess storage capacity)	13,410	TA-54-38, Outdoor Pad. Includes Loading Dock and Pad	DOE/Triad
<b>TOTAL S01</b>	<b>47,520</b>		

<sup>1</sup> RCRA is the Resource Conservation and Recovery Act.

**EXPLANATION OF PROCESS CODE LISTINGS  
AND DESIGN CAPACITIES AT TECHNICAL AREA (TA) 54 WEST  
(Continued)**

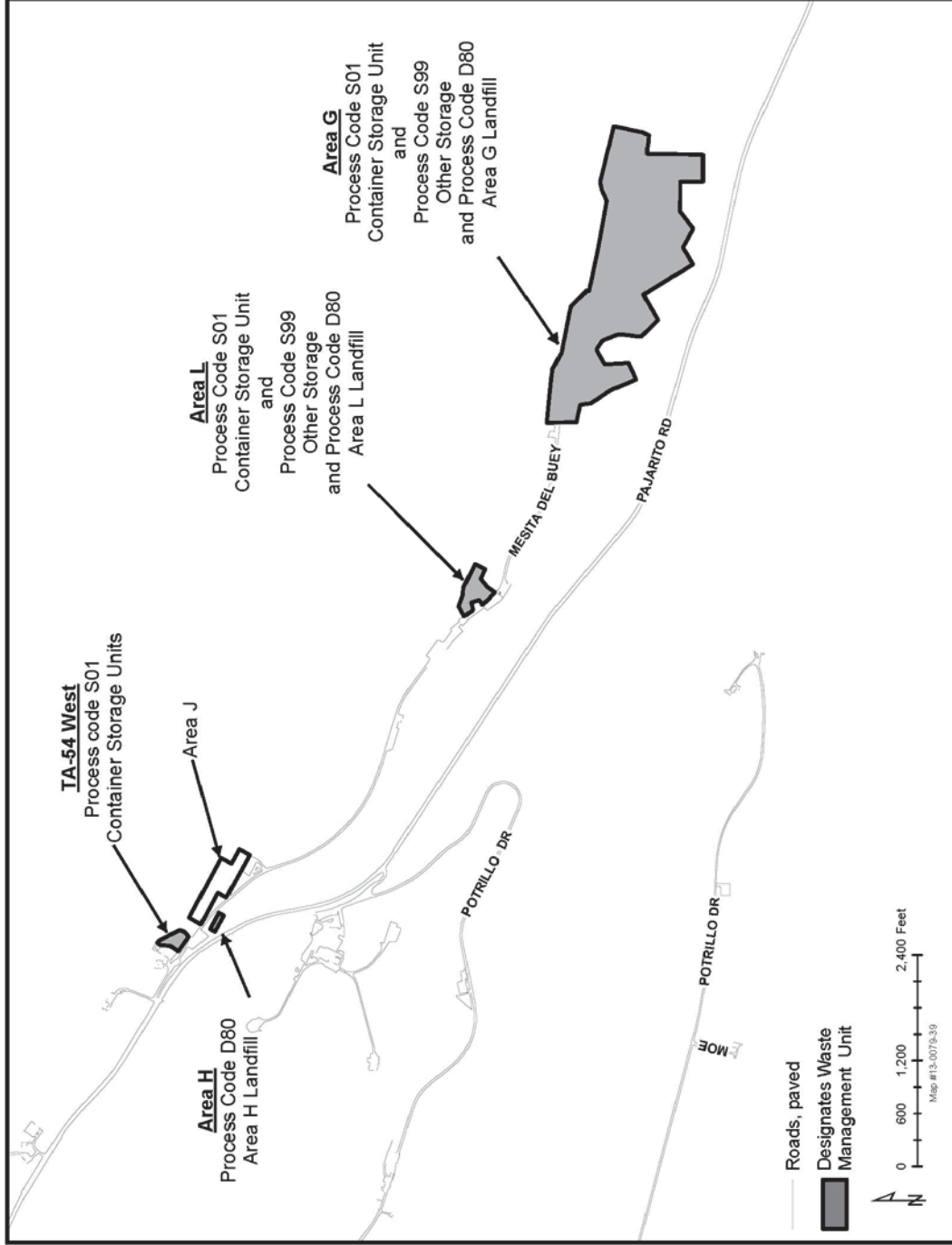
Description	Capacity (gallons)	Associated Structure No./Area	Co-Operator
<b><u>Item 6, Line 18 T04 Treatment - Other</u></b>			
Macroencapsulation process for RCRA <sup>1</sup> -regulated waste	3,441	TA-54-38 Outdoor Pad. Includes Loading Dock and Pad	DOE/Triad
<b>TOTAL T04</b>	<b>3,441</b>		

<sup>1</sup> RCRA is the Resource Conservation and Recovery Act.

**EXPLANATION OF PROCESS CODE LISTING  
AND DESIGN CAPACITY FOR TECHNICAL AREA (TA) 54,  
AREA H LANDFILL**

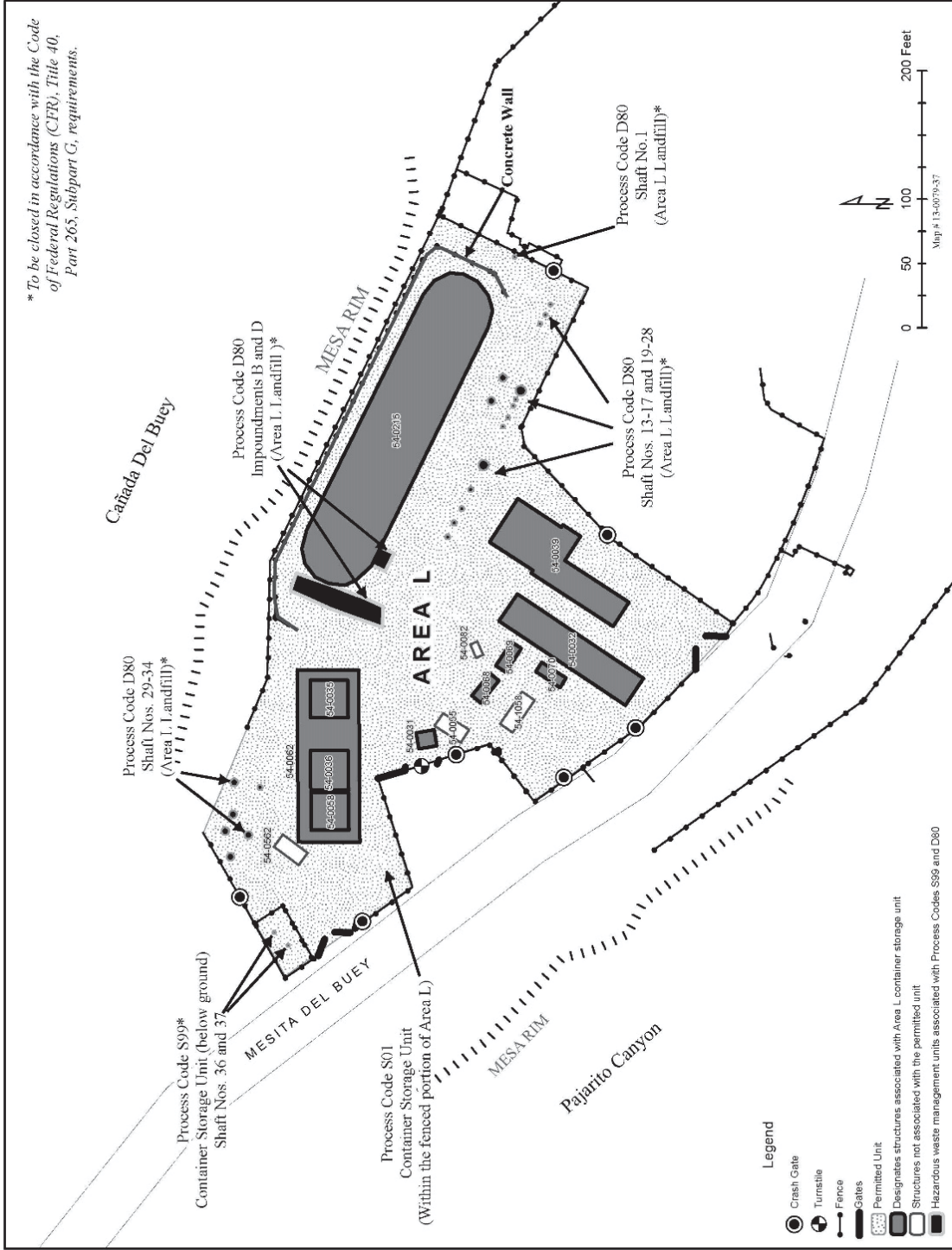
Description	Capacity (cubic yards)	Associated Structure No./Area	Co-Operator
<b><u>Item 6, Line 19 D80</u></b>			
<b><u>Landfill</u></b>			
Area H Landfill (This unit consists of Shaft 9) <sup>1</sup>	63	Area H	DOE/N3B
<b>TOTAL D80</b>	<b>63</b>		

<sup>1</sup> RCRA is the Resource Conservation and Recovery Act.



**Figure 54-1**  
 Technical Area (TA) 54, Site Location Map

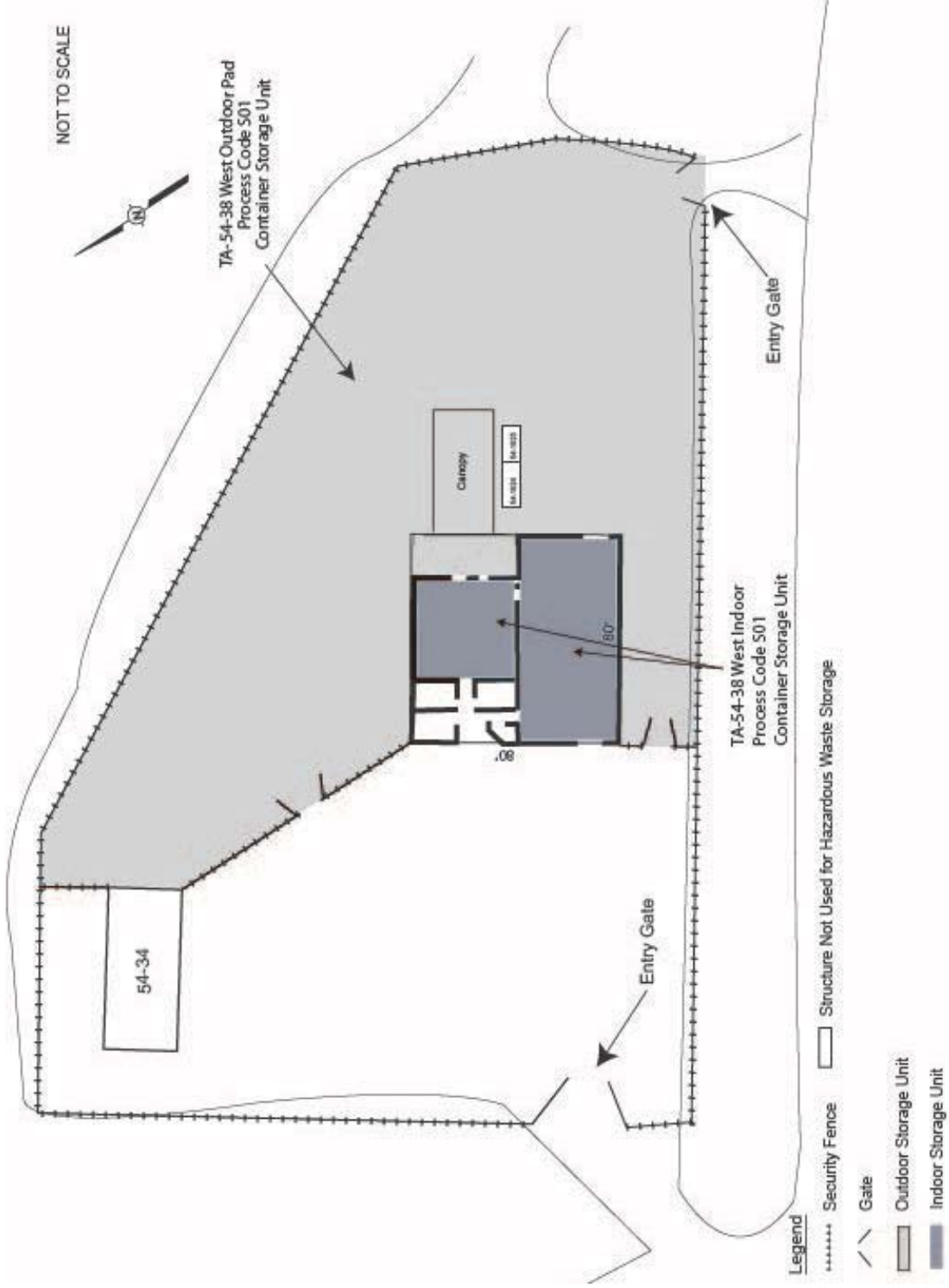
\* To be closed in accordance with the Code of Federal Regulations (CFR), Title 40, Part 265, Subpart G, requirements.



- Legend**
- Crash Gate
  - ⊕ Turnstile
  - Fence
  - Gates
  - ▭ Permitted Unit
  - ▭ Designates structures associated with Area L container storage unit
  - ▭ Structures not associated with the permitted unit
  - ▭ Hazardous waste management units associated with Process Codes S999 and D80

**Figure 54-2**  
 Technical Area (TA) 54, Area L





**Figure 54-4**  
 Technical Area (TA) 54 West, Building 38



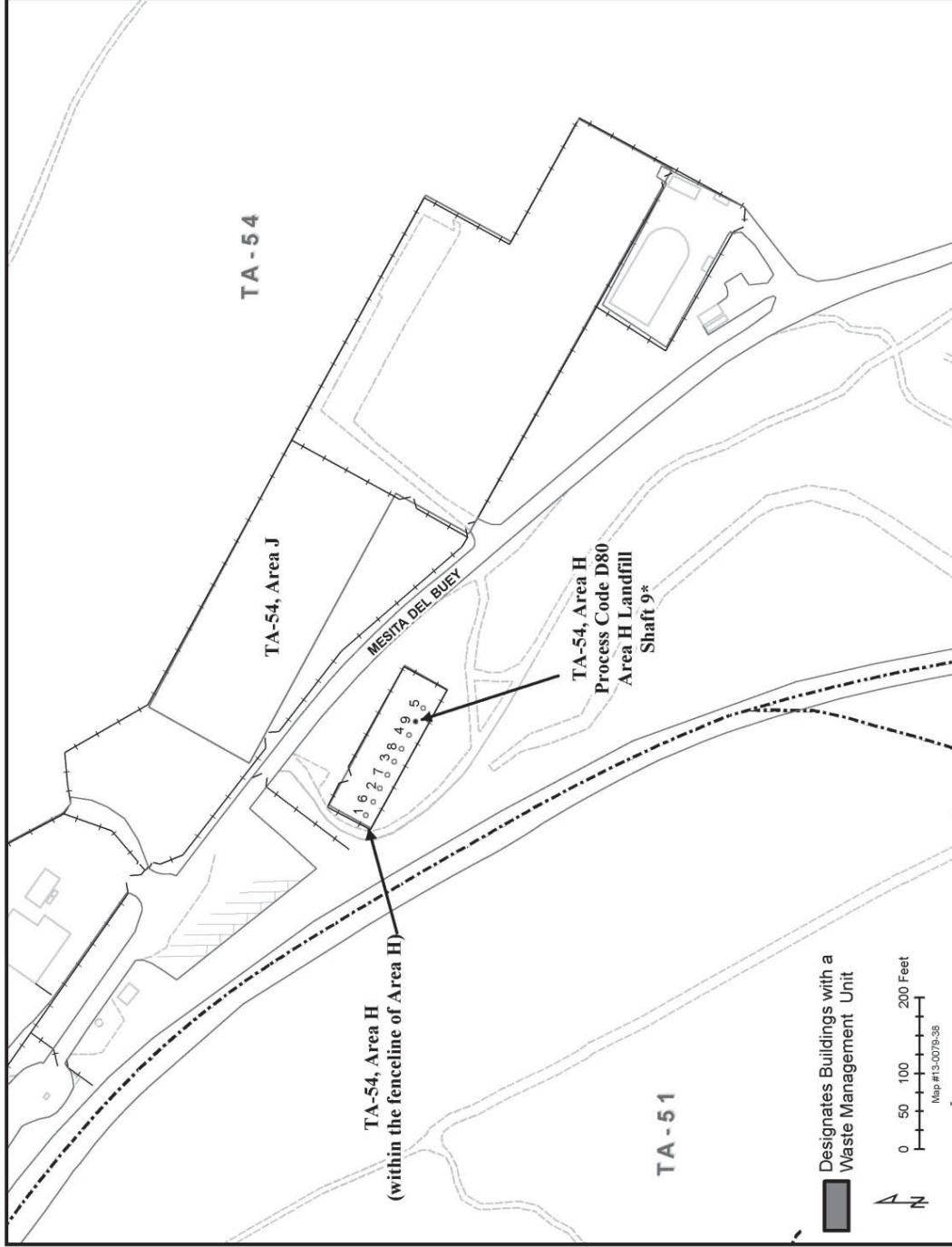
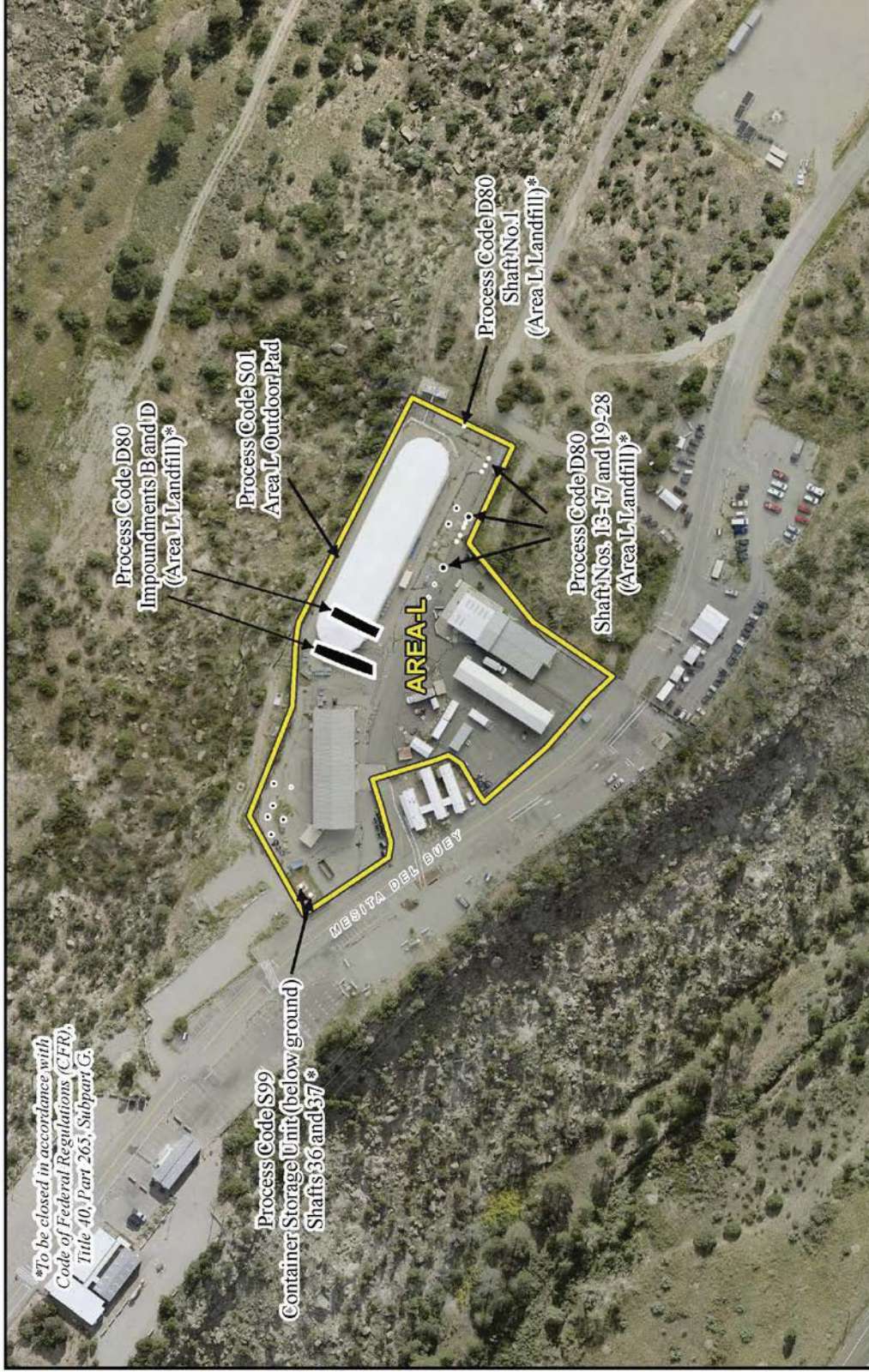


Figure 54-5  
Technical Area (TA) 54, Area H

Document: LANL General Part A  
 Revision No: 9.0  
 Date: August 2018

Document: LANL General Part A  
 Revision No: 9.0  
 Date: August 2018

# Aerial Photograph of TA-54, Area L



 AREA L Boundary  
 Hazardous Waste Management Units associated with Process Codes S99 and D80

New Mexico State Plane Coordinate System  
 Central Zone US FT  
 North Datum 883  
 2014 Orthophotography Nov. 21, 2017  
 Map # 17-06-02-11\_Aerial\_TA-54\_Areal

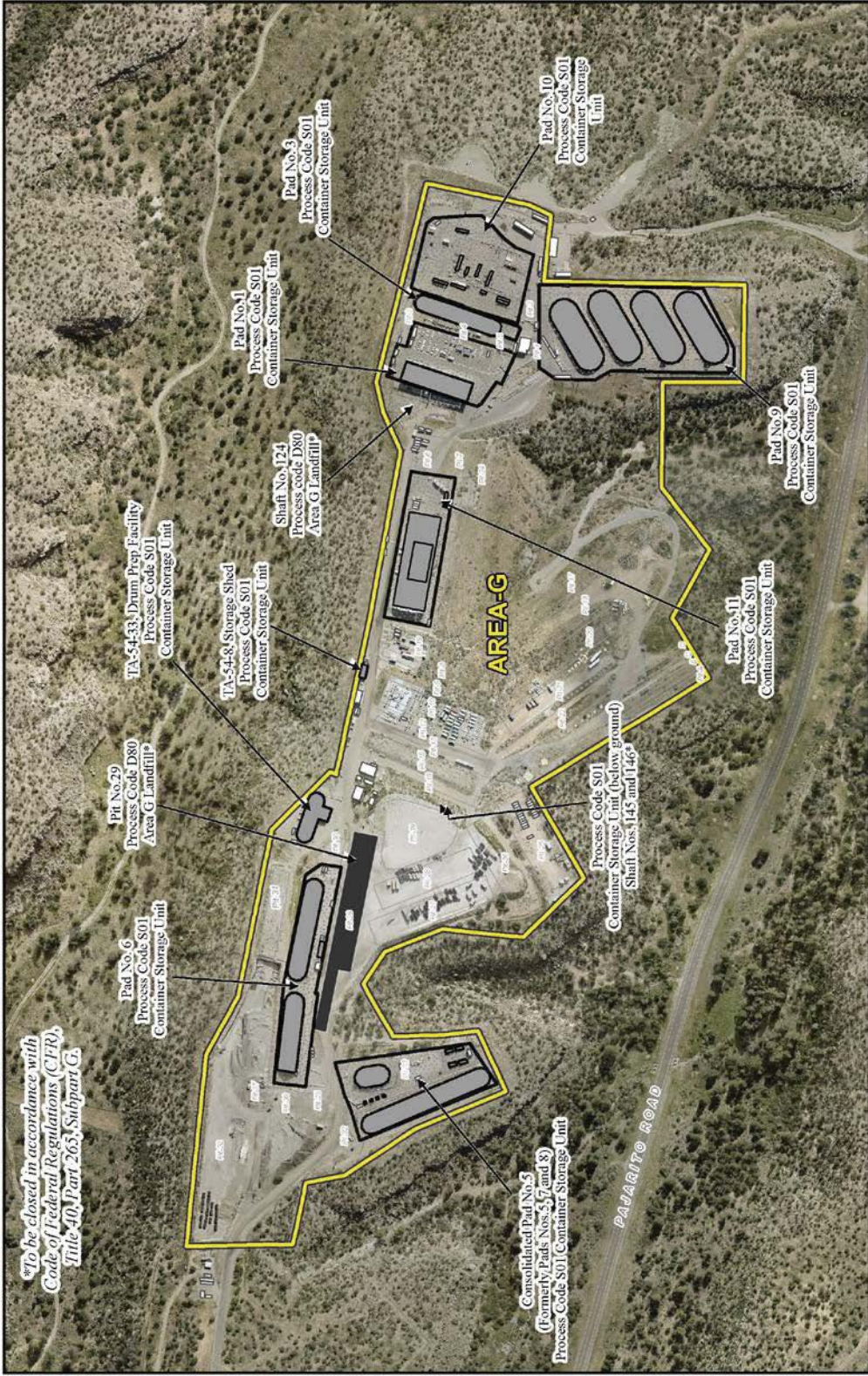




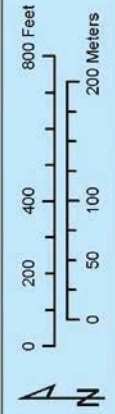
Document: LANL General Part A  
 Revision No: 9.0  
 Date: August 2018

Document: LANL General Part A  
 Revision No: 9.0  
 Date: August 2018

# Aerial Photograph of TA-54, Area G



*\*To be closed in accordance with Code of Federal Regulations (CFR), Title 40, Part 265, Subpart G.*



New Mexico State Plane Coordinate System  
 Central Zone US FT  
 North American Datum 1983  
 2014 Orthophotography, June 13, 2017  
 Map #17-0042-02

- Designates structures associated with Area G container storage units
- Structures not associated with the permitted unit
- Designates sites associated with Area G Landfill
- Permitted Unit Boundary
- Pit outline



Document: LANL General Part A  
Revision No: 9.0  
Date: August 2018

Document: LANL General Part A  
Revision No: 9.0  
Date: August 2018

# Aerial Photograph of TA-54-38 West



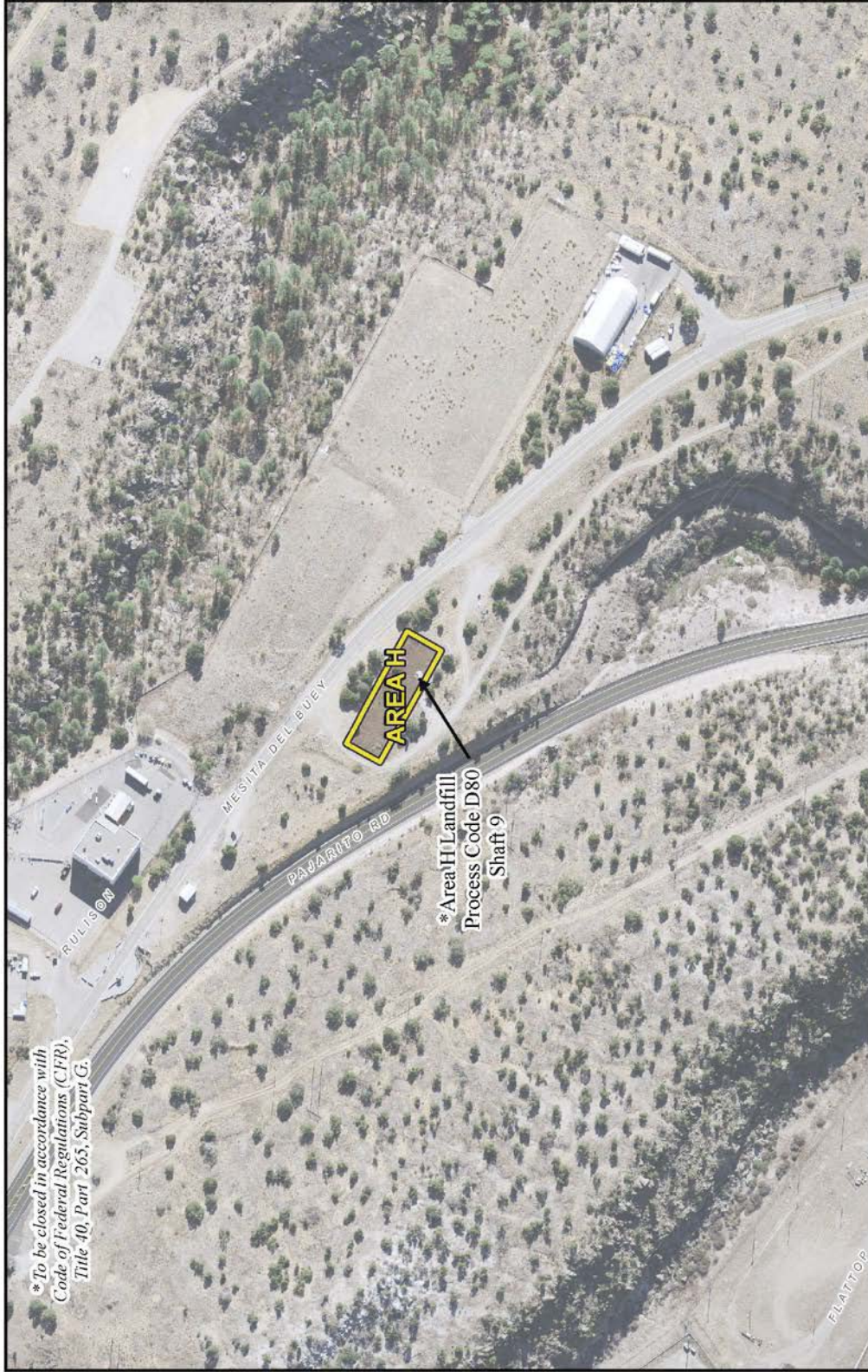
New Mexico State Plane Coordinate System  
Central Zone US Ft  
North American Datum: 1983  
2011 Orthophotography April 22, 2013  
Map # 13-0079-44



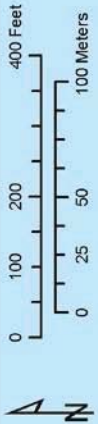
Document: LANL General Part A  
Revision No: 9.0  
Date: August 2018

Document: LANL General Part A  
Revision No: 9.0  
Date: August 2018

# Aerial Photograph of TA-54, Area-H



*\* To be closed in accordance with Code of Federal Regulations (CFR), Title 40, Part 263, Subpart G.*



New Mexico State Plane Coordinate System  
North Central Zone US FT 1983  
2011 Orthophotography April 22, 2013  
Map # 13-079-21

 AREA H Boundary



TA-54-31, Area L, Process Code S01, Container Storage Unit



TA-54-32, Area L, Process Code S01, Container Storage Unit  
(Concrete Containment Structure)





TA-54-39, Area L, Process Code S01, Container Storage Unit



TA-54-35, TA-54-36 and TA-54-58, Area L, Process Code S01, Container Storage Units



TA-54-68, Area L, Process Code S01, Container Storage  
(Modular Storage Building 68)



TA-54-69, Area L, Process Code S01, Container Storage  
(Modular Storage Building 69)



TA-54-70, Area L, Process Code S01, Container Storage  
(Modular Storage Building 70)





TA-54-215, Area L, Process Code S01, Container Storage Pad/  
Storage Dome 215 and Process Code D80, Impoundments B and D



TA-54, Area L, Process Code D80, Disposal Shafts 13-17 and 19-28  
(To be closed)



TA-54, Area L, Process Code S01, Container Storage Unit (below ground)  
Storage Shafts No. 36 and 37  
(To be closed)





TA-54, Area L, Process Code D80, Disposal Shaft 1  
(To be closed)



TA-54, Area L, Process Code D80, Disposal Shafts 29-34  
(To be closed)



TA-54, Area G, Pad No. 1  
Process Code S01, Container Storage



TA-54-412, Area G, Pad No. 1  
Decontamination and Volume Reduction System Building  
Process Code S01, Container Storage





TA-54, Area G, Pad No. 10  
Process Code S01, Container Storage



TA-54-48, Area G, Pad No. 3  
Storage Dome  
Process Code S01, Container Storage



TA-54-49, Storage Dome  
Area G, Consolidated Pad No. 5  
(Formerly Pad Nos. 5, 7, and 8)  
Process Code S01, Container Storage



TA-54-144, TA-54-145, TA-54-146, and  
TA-54-177, Storage Sheds  
Area G, Consolidated Pad No. 5  
(Formerly Pad Nos. 5, 7, and 8)  
Process Code S01, Container Storage



TA-54-224 Storage Dome  
Area G, Consolidated Pad No. 5  
(Formerly Pad Nos. 5, 7, and 8)  
Process Code S01, Container Storage



TA-54, Area G, Consolidated Pad No. 5  
(Formerly Pad Nos. 5, 7, and 8)  
Process Code S01, Container Storage





TA-54-1027 Storage Shed  
Area G, Consolidated Pad No. 5  
(Formerly Pad Nos. 5, 7, and 8)  
Process Code S01, Container Storage



TA-54-1030 Storage Shed  
Area G, Consolidated Pad No. 5  
(Formerly Pad Nos. 5, 7, and 8)  
Process Code S01, Container Storage



TA-54-1028 Storage Shed  
Area G, Consolidated Pad No. 5  
(Formerly Pad Nos. 5, 7, and 8)  
Process Code S01, Container Storage



TA-54-1041 Storage Shed  
Area G, Consolidated Pad No. 5  
(Formerly Pad Nos. 5, 7, and 8)  
Process Code S01, Container Storage



TA-54-283, Area G, Pad No. 6  
Storage Dome  
Process Code S01, Container Storage



TA-54-153, Area G, Pad No. 6,  
Storage Dome  
Process Code S01, Container Storage





TA-54-232, Area G, Pad No. 9  
Storage Dome  
Process Code S01, Container Storage



TA-54-230, Area G, Pad No. 9  
Storage Dome  
Process Code S01, Container Storage



TA-54-231, Area G, Pad No. 9  
Storage Dome  
Process Code S01, Container Storage



TA-54-229, Area G, Pad No. 9  
Storage Dome  
Process Code S01, Container Storage



TA-54-375, Area G, Pad No. 11  
Storage Dome  
Process Code S01, Container Storage



TA-54-8, Area G, Storage Shed  
Process Code S01, Container Storage Unit





TA-54-33, Area G, Drum Prep Facility  
Process Code S01, Container Storage Unit



TA-54, Area G, Retrievable Storage Shafts Nos. 145 and 146  
Process Code S01, Container Storage Unit  
(To be closed)



TA-54, Area G, Disposal Shaft 124  
Process Code D80, Material Disposal Area G  
(To be closed)



TA-54, Area G, Disposal Pit 29  
Process Code D80, Material Disposal Area G  
(To be closed)





TA-54-38 West Outdoor Pad,  
Process Code S01, Container Storage Unit



TA-54-38 West Indoor, Low Bay,  
Process Code S01, Container Storage Unit



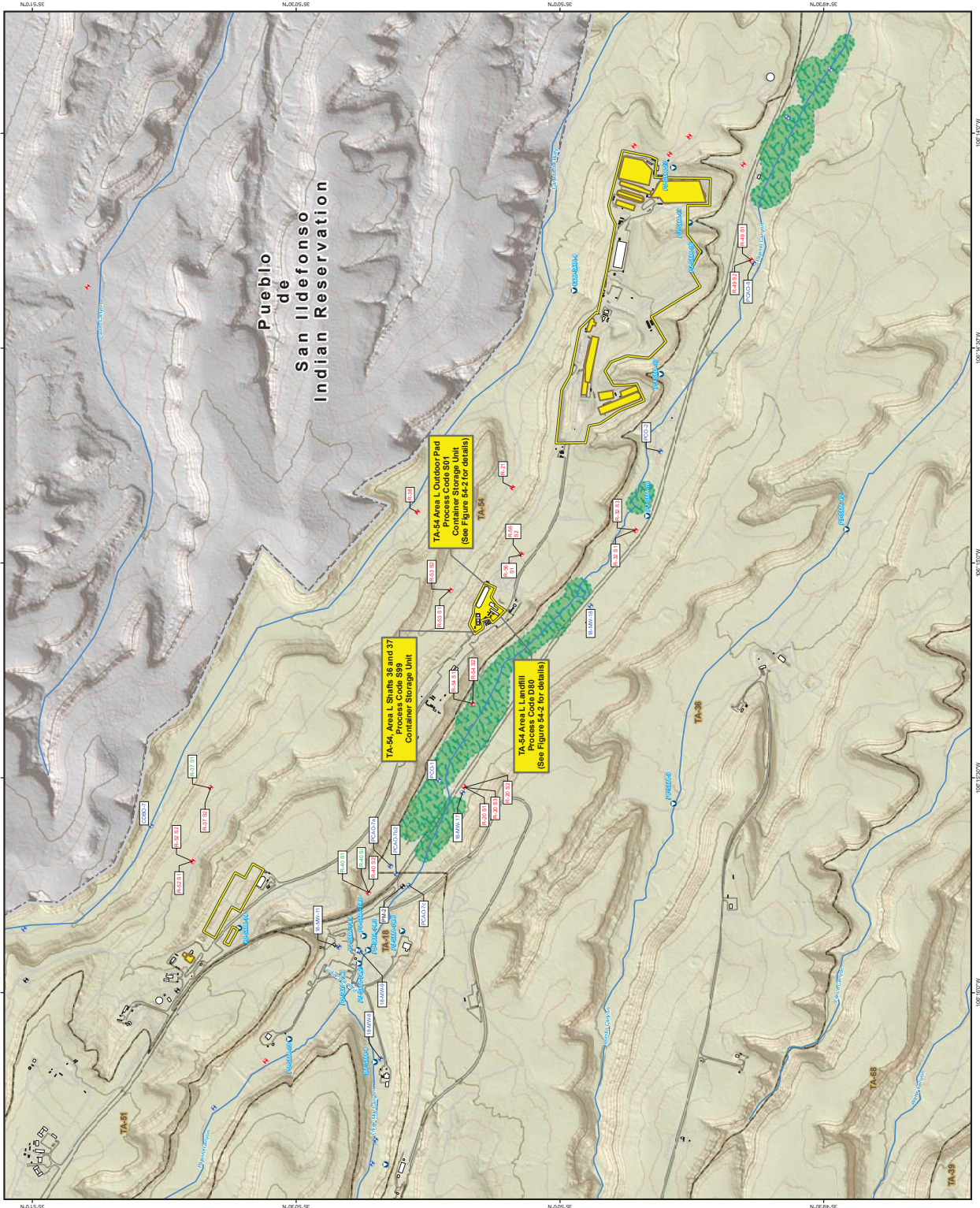
TA-54-38 West Indoor, High Bay,  
Process Code S01, Container Storage Unit



TA-54, Area H, Shaft 9  
Process Code D80, Material Disposal Area H  
(To be closed)  
(Photograph taken 4/16/98)



# Topographic Map Showing the Location of Hazardous Waste Management Units at Technical Area 54, Area L



	Alluvial monitoring well
	Intermediate monitoring well
	Regional monitoring well
	Water supply well
	Springs
	NPDES Permitted Outfalls
	Site Monitoring Areas (SMAs)
	Drainage
	Contours, 100 ft
	Contours, 20 ft
	Roads, paved
	Roads, dirt
	Hazardous Waste Management Unit
	Area Boundary
	Structures
	Wetlands
	LANL Boundary
	Technical Area



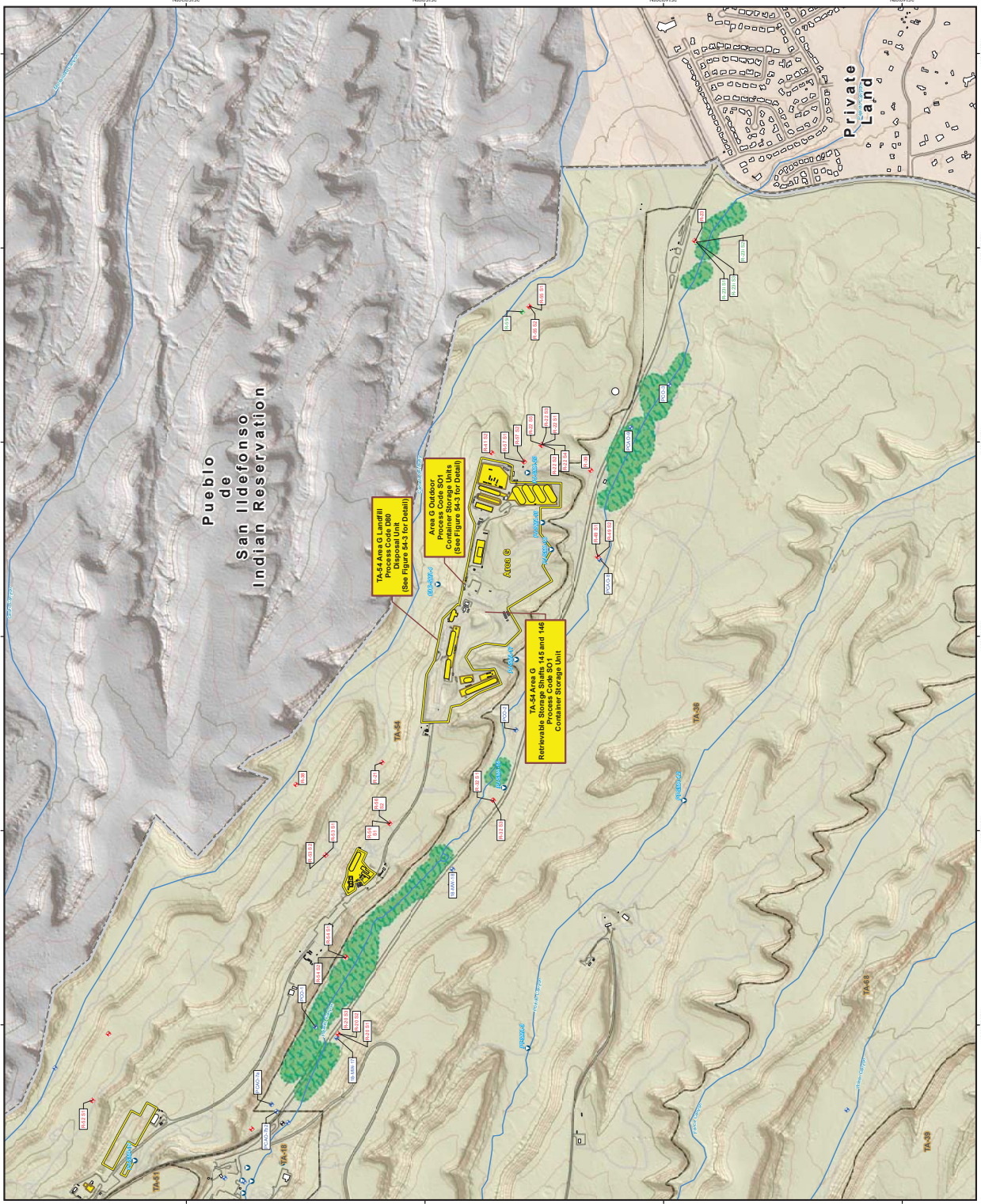
Created by Writers Red Star, 13 SEPTEMBER 2013 Map #13-0079-06  
 New Mexico State Plane Coordinate System  
 Central Zone US FT  
 North American Datum 1983  
 National Geodetic Vertical Datum 1929

Note: Labeled wells, outfalls, springs, and SMAs are within 1 mile of AREAL.

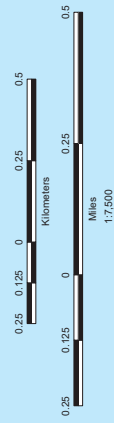
DISCLAIMER: This map was compiled from many sources, including, but not limited to, LANL Hazardous Waste Facility Permit. All other areas for this map should be confirmed with OIGDD staff.



# Topographic Map Showing the Location of Hazardous Waste Management Units at Technical Area 54, Area G



- Alluvial monitoring well
- Intermediate monitoring well
- Regional monitoring well
- Water supply well
- Springs
- NPDES Permitted Outfalls
- Site Monitoring Areas (SMAs)
- Drainage
- Contours, 100 ft
- Contours, 20 ft
- Roads, paved
- Roads, dirt
- Hazardous Waste Management Unit
- Area Boundary
- Structures
- Wetlands
- LANL Boundary
- Technical Area



Created by Writers Red Star, 13 SEPTEMBER 2013 Map #13-0079-07  
 New Mexico State Plane Coordinate System  
 Central Zone US FT  
 North American Datum 1983  
 National Geodetic Vertical Datum 1929

Note: Labeled wells, outfalls, springs, and SMAs are within 1 mile of AREA G  
 PSCS SMAS: This map was compiled for use by personnel associated with the LANL Hazardous Waste Facility Permit. All other areas for this map should be confirmed with OIG-00 staff.



# Topographic Map Showing the Location of Permitted Units at Technical Area 54, West

