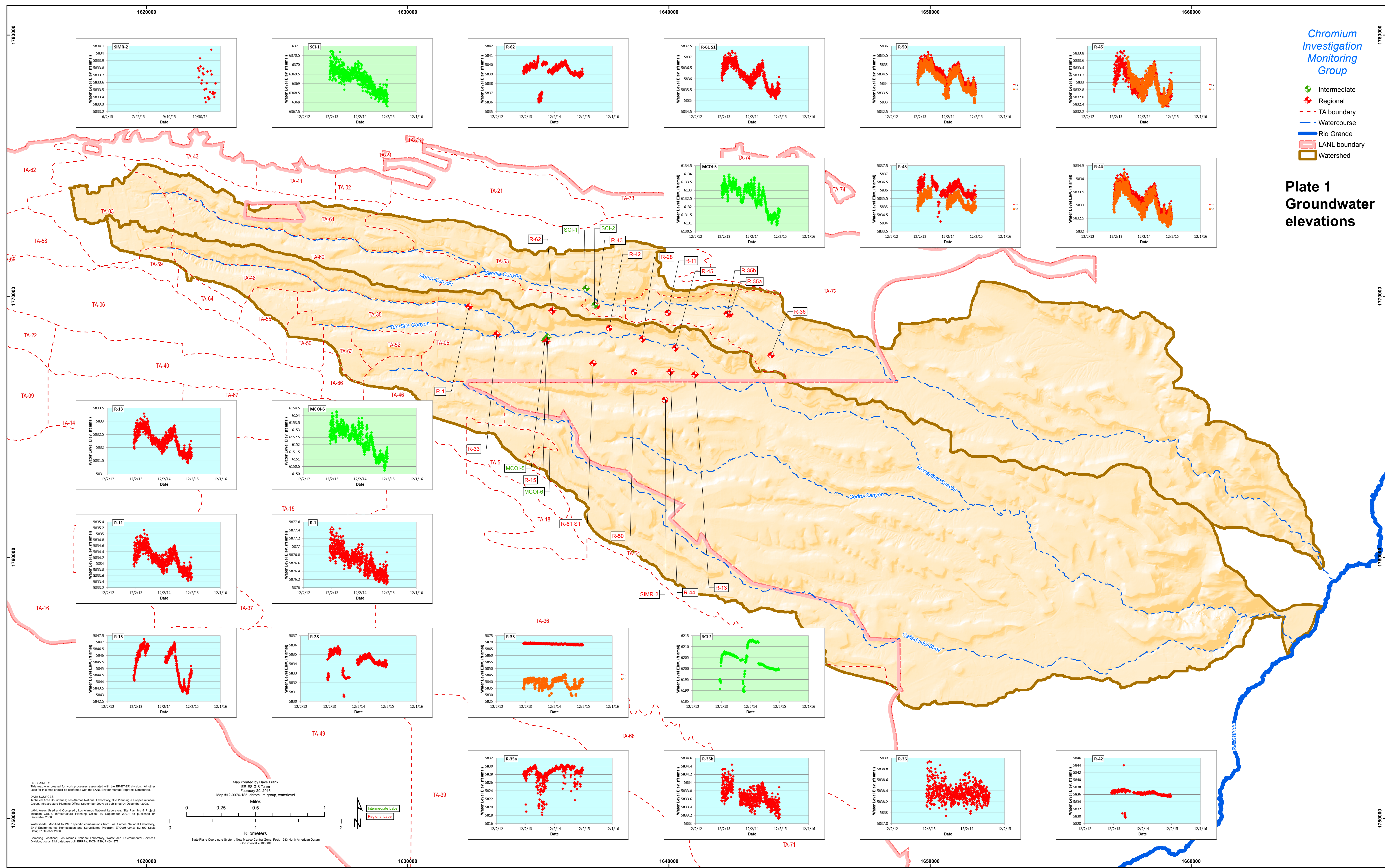


### Chromium Investigation Monitoring Group

- Intermediate
- Regional
- Watercourse
- Rio Grande
- LANL boundary
- Watershed

## Plate 1 Groundwater elevations



DISCLAIMER: This map was created for work processes associated with the EP-ET-ER division. All other uses for this map should be confirmed with the LANL Environmental Programs Directorate.

DATA SOURCES: Technical Area Boundaries, Los Alamos National Laboratory, Site Planning & Project Initiation Group, Infrastructure Planning Office, September 2007, as published 04 December 2008.

LANL Areas Used and Occupied: Los Alamos National Laboratory, Site Planning & Project Initiation Group, Infrastructure Planning Office, 19 September 2007, as published 04 December 2008.

Watersheds: Modified to PMR specific combinations from Los Alamos National Laboratory, ENV Environmental Remediation and Surveillance Program, EP2008-0842, 12-3005 Scale Date: 27 October 2008.

Sampling Locations: Los Alamos National Laboratory, Waste and Environmental Services Division, Local SIM database path: ESRPW\_PMG-1700\_PMG-102.

Map created by Dave Frank  
ER-ES GIS Team  
February 20, 2016  
Map #12-0076-185, chromium group, waterlevel

Miles  
0 0.25 0.5 1

Kilometers  
0 0.25 0.5 1

State Plane Coordinate System, New Mexico Central Zone, Feet, 1983 North American Datum  
GRID Interval = 1000ft