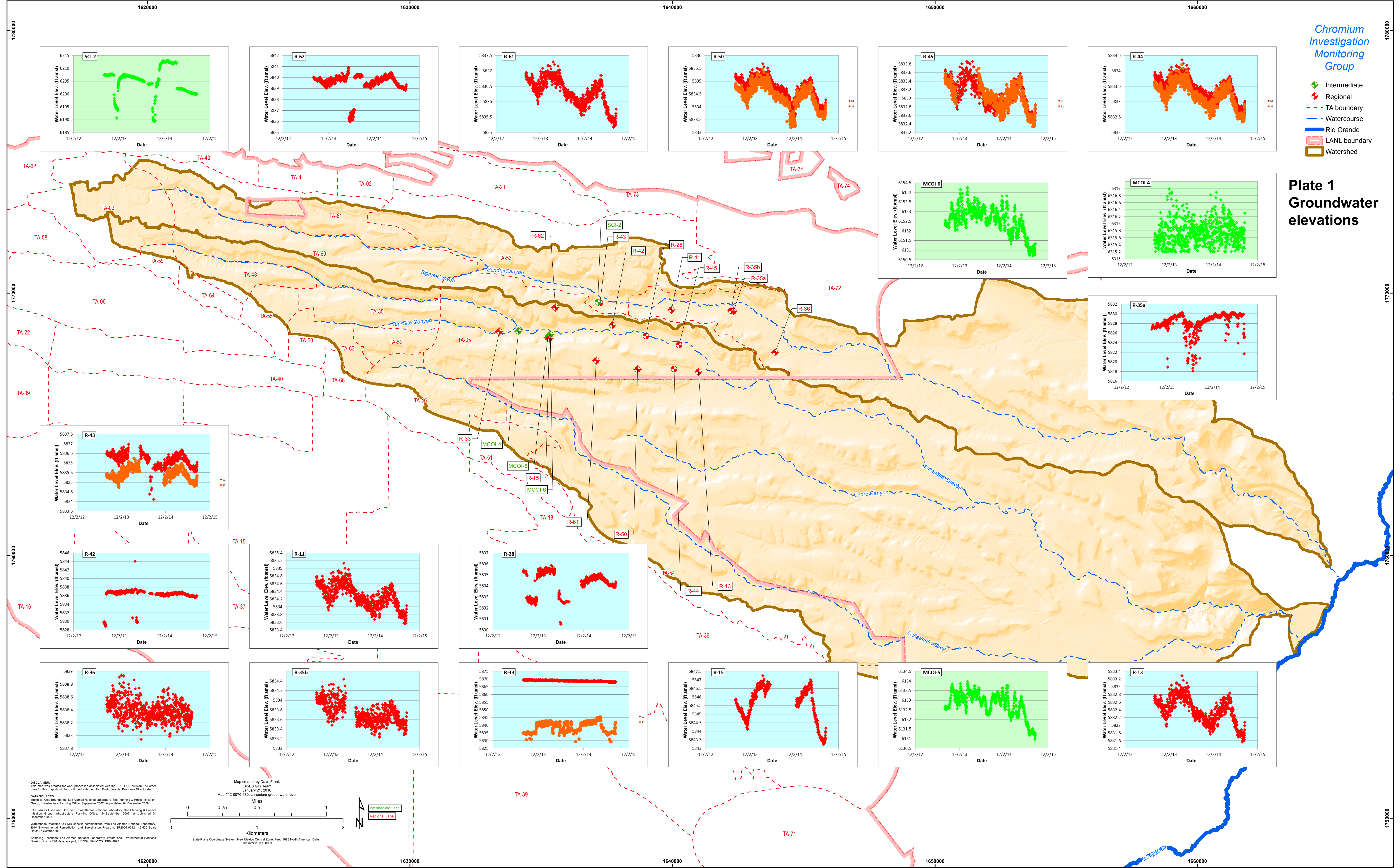


Chromium Investigation Monitoring Group

- ◆ Intermediate
- ◆ Regional
- TA boundary
- Watercourse
- Rio Grande
- LANL boundary
- Watershed

Plate 1 Groundwater elevations



DISCLAIMER:
This map was created for work processes associated with the EP-ET-ER division. All other uses for this map should be confirmed with the LANL Environmental Programs Directorate.

DATA SOURCES:
Technical Area Boundaries, Los Alamos National Laboratory, Site Planning & Project Initiation Group, Infrastructure Planning Office, September 2007, as published 04 December 2008.
LANL Areas Used and Occupied, Los Alamos National Laboratory, Site Planning & Project Initiation Group, Infrastructure Planning Office, 19 September 2007, as published 04 December 2008.
Watersheds, Modified to PMR specific combinations from Los Alamos National Laboratory, EW Environmental Remediation and Surveillance Program, EP2008-0842, 12,300 Scale Date: 27 October 2008.
Sampling Locations, Los Alamos National Laboratory, Waste and Environmental Services Division, Local ERM database part: ERMPL, IMG: IMG-182.

Map created by Dave Frank
ER-ES GIS Team
January 21, 2015
Map #12-0076-180, Chromium group, waterlevel

Miles
0 0.25 0.5 1

Kilometers
0 1 2

State Plane Coordinate System, New Mexico Central Zone, Feet, 1983 North American Datum
GIC interval = 1000ft



Intermediate Label
Regional Label