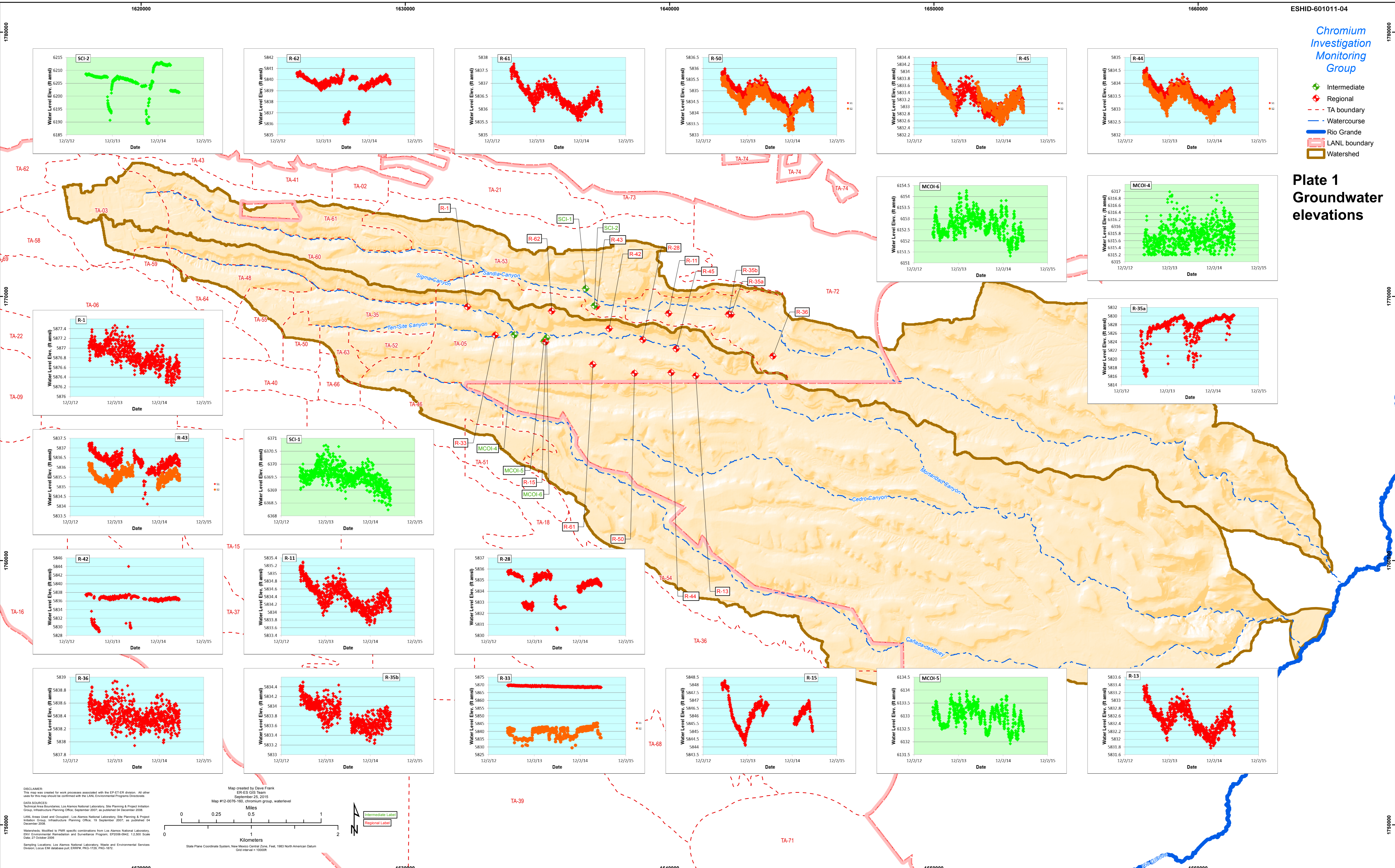


Chromium Investigation Monitoring Group

- ◆ Intermediate
- ◆ Regional
- - - TA boundary
- - - Watercourse
- - - Rio Grande
- ▭ LANL boundary
- ▭ Watershed

Plate 1 Groundwater elevations



DISCLAIMER:
This map was created for work processes associated with the EP-ET-ER division. All other uses for this map should be confirmed with the LANL Environmental Programs Directorate.

DATA SOURCES:
Technical Area Boundaries, Los Alamos National Laboratory, Site Planning & Project Initiation Group, Infrastructure Planning Office, September 2007, as published 04 December 2008.
LANL Areas Used and Occupied, Los Alamos National Laboratory, Site Planning & Project Initiation Group, Infrastructure Planning Office, 19 September 2007, as published 04 December 2008.

Watersheds: Modified to PMR specific combinations from Los Alamos National Laboratory, ENV Environmental Remediation and Surveillance Program, EP2006-0942, 1:2,500 Scale Date 27 October 2006.

Sampling Locations: Los Alamos National Laboratory, Waste and Environmental Services Division, Local EIM database put: ERRPW_P02-1720_P02-1872.

Map created by Dave Frank
ER-ES GIS Team
September 25, 2015
Map #12-0076-100, chromium group, waterlevel

Miles
0 0.25 0.5 1

Kilometers
0 1 2

Intermediate Label
Regional Label

State Plane Coordinate System, New Mexico Central Zone, Feet, 1983 North American Datum
Grid Interval = 10000'

175000

175000

178000

178000

177000

177000

176000

176000

175000

175000

162000

163000

164000

165000

166000

162000

163000

164000

165000

166000