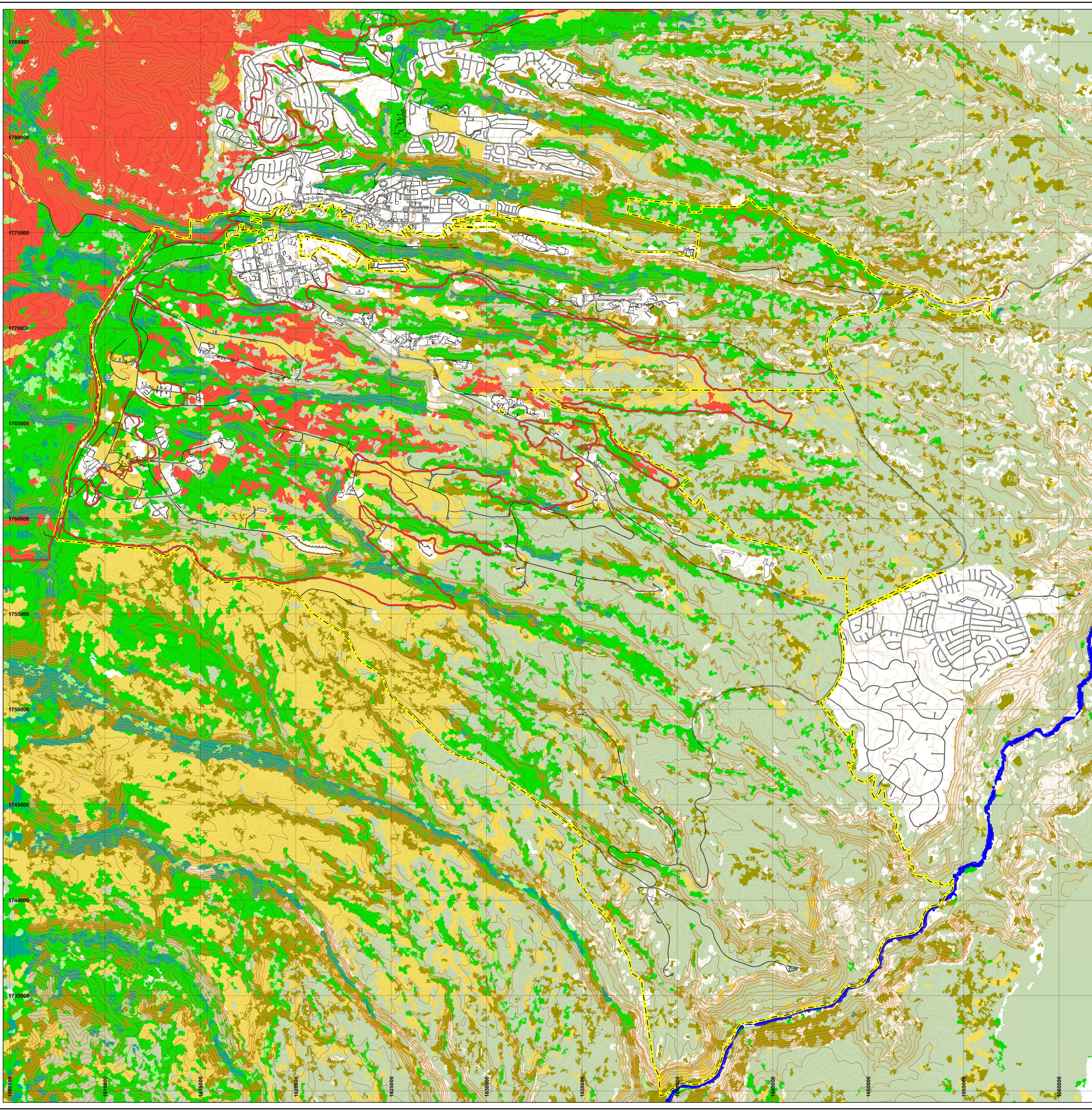


# Plate 1. Vegetation Land Cover Map of the LANL Area



**Legend**

- Cerro Grande extent
- LANL boundary
- Paved road
- 20 ft Contour
- 100 ft Contour

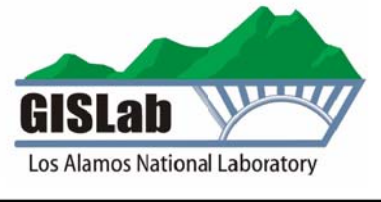
**Description**

- Aspen-Riparian-Wetland
- Cerro Grande Fire high burn severity
- Grass species
- Mixed conifer-Spruce-Fir
- Open Water
- Pinon-Juniper
- Ponderosa Pine
- Shrub species
- Urban-Sparse-Bare rock

**DATA SOURCES**  
 Title, Owner, ID, Intended Scale, Publication Date.  
 1991 Hypsography (100ft); Los Alamos National Laboratory, Remediation Services Project; NA; Unknown; 1991.  
 1991 Hypsography (20ft); Los Alamos National Laboratory, Remediation Services Project; NA; Unknown; 1991.  
 Boundary of Department of Energy Property In and Around the Los Alamos National Laboratory; Site and Project Planning Group; NA; Unknown; February 1, 2003.  
 Cerro Grande Extent; Los Alamos National Laboratory, Earth and Environmental Sciences GISLab; NA; Unknown; April 5, 2002.  
 Roads, surfaced; Los Alamos County; ER2004-0071; Unknown; 2004; Provided by the Los Alamos National Laboratory Remediation Services Project.  
 Vegetation Taxonomy; Los Alamos National Laboratory, Environmental Stewardship Ecology Group; NA; Unknown; June 19, 2003.

LA-UR-15-27577

Cartography by: Doug Walther  
 Date: December 21, 2004  
 GISLab M#: 201262  
 Request #: 13572, 13580, 13690



State Plane Coordinate System, New Mexico Central Zone, 1983 North American Datum. Units Feet.  
 Grid displays New Mexico State Plane coordinates in feet.  
 1:24,000

**DISCLAIMER OF LIABILITY:**  
 Neither the United States Government nor the University of California nor any of their employees, makes any warranty, express or implied, including the warranties of merchantability and fitness for a particular purpose, or assumes any legal liability or responsibility for the accuracy, completeness, or usefulness of any information, apparatus, product, or process disclosed, or represents that its use would not infringe privately owned rights.  
 Work performed on behalf of the RRES Remediation Services Project, Los Alamos National Laboratory, Los Alamos, NM, 87545.