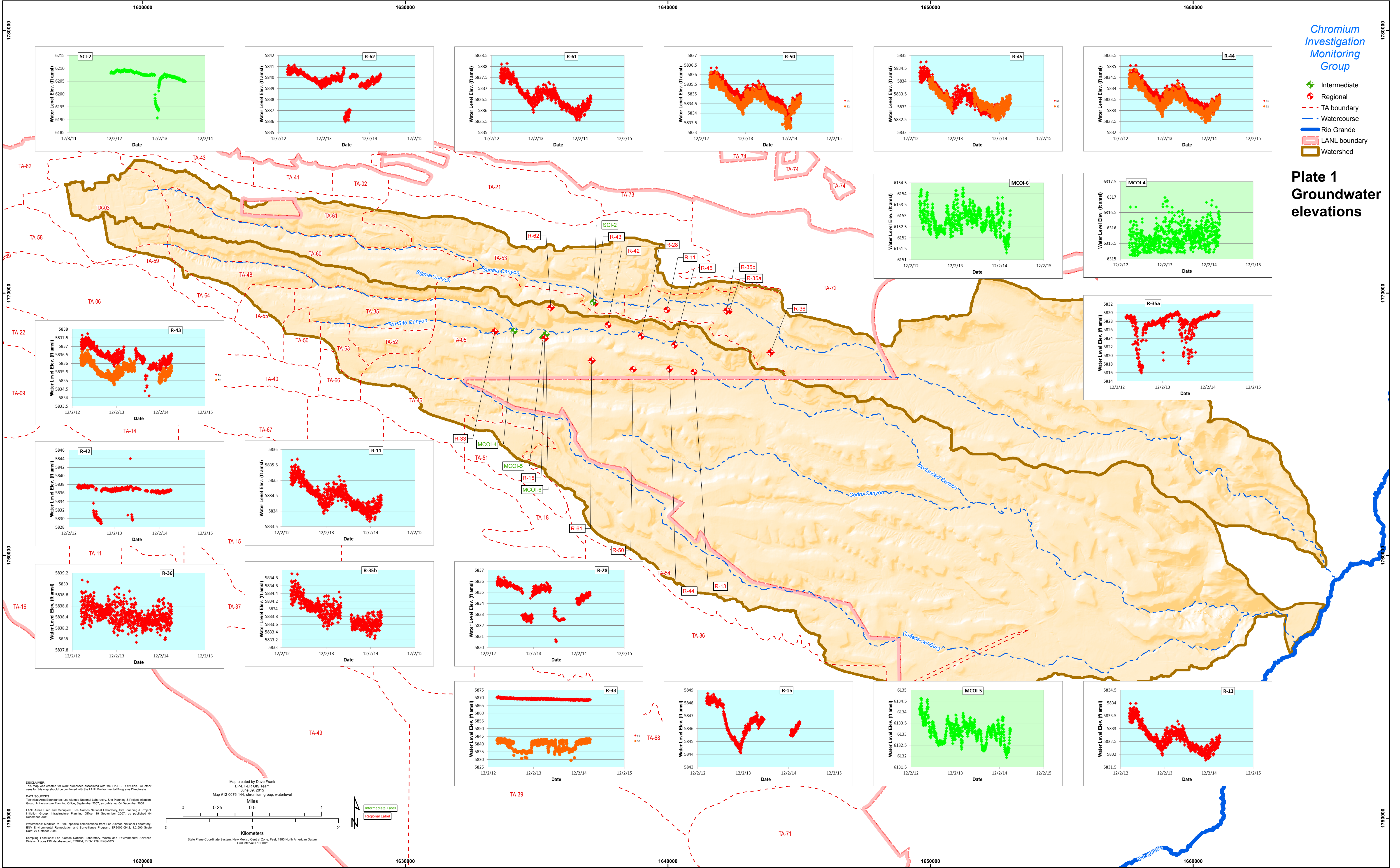


Chromium Investigation Monitoring Group

- Intermediate
- Regional
- TA boundary
- Watercourse
- Rio Grande
- LANL boundary
- Watershed

Plate 1 Groundwater elevations



DISCLAIMER: This map was created for work processes associated with the EP-ET-ER division. All other uses for this map should be confirmed with the LANL Environmental Programs Directorate.

DATA SOURCES: Technical Area Boundaries, Los Alamos National Laboratory, Site Planning & Project Initiation Group, Infrastructure Planning Office, September 2007, as published 04 December 2008.

LANL Areas Used and Occupied: Los Alamos National Laboratory, Site Planning & Project Initiation Group, Infrastructure Planning Office, 19 September 2007, as published 04 December 2008.

Watersheds: Modified to PMR specific combinations from Los Alamos National Laboratory, ENV Environmental Remediation and Surveillance Program, EP2008-0842, 12/30/08 Scale Date: 27 October 2008.

Sampling Locations: Los Alamos National Laboratory, Waste and Environmental Services Division, Local ERM database path: ERM/PMR/TA01/TA01-102.

Map created by Dave Frank
 EP-ET-ER GIS Team
 June 09, 2015
 Map #12-0076-144, chromium group, waterlevel

Miles
 0 0.25 0.5 1

Kilometers
 0 1 2

State Plane Coordinate System, New Mexico Central Zone, Feet, 1983 North American Datum
 GSD interval = 10000ft

Intermediate Label
 Regional Label