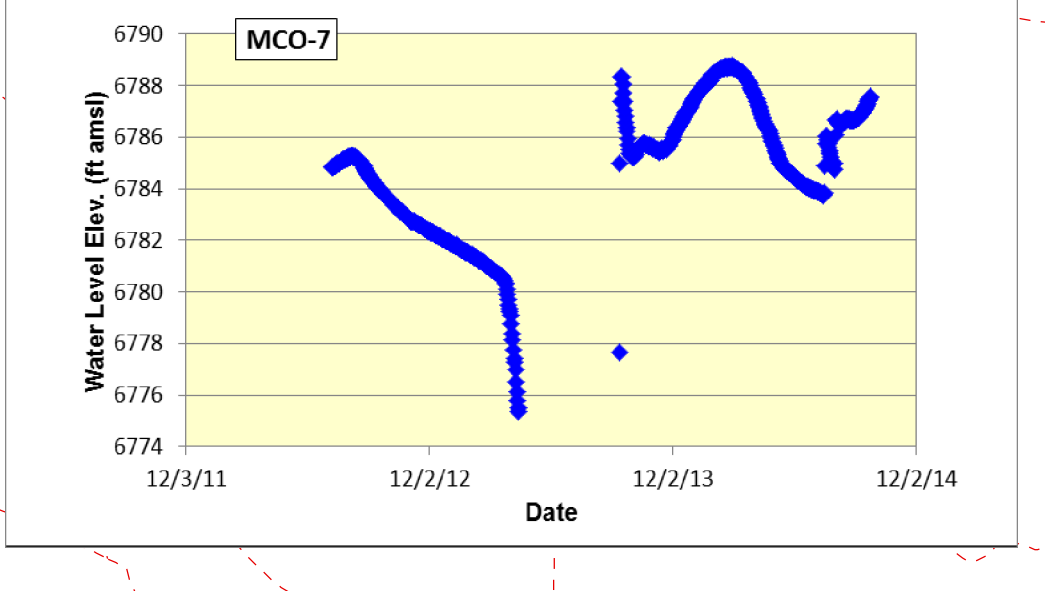
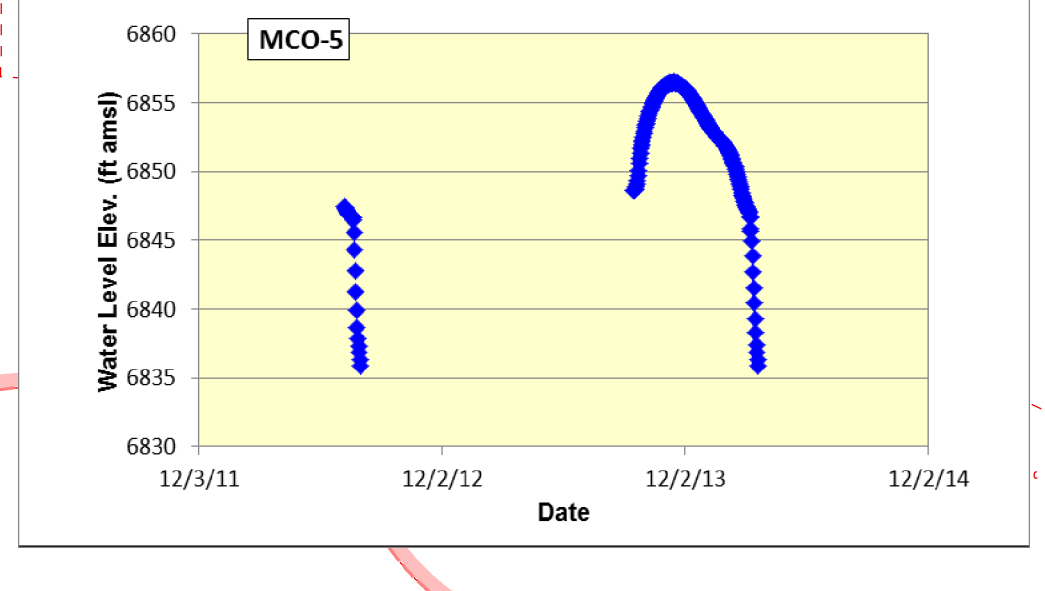
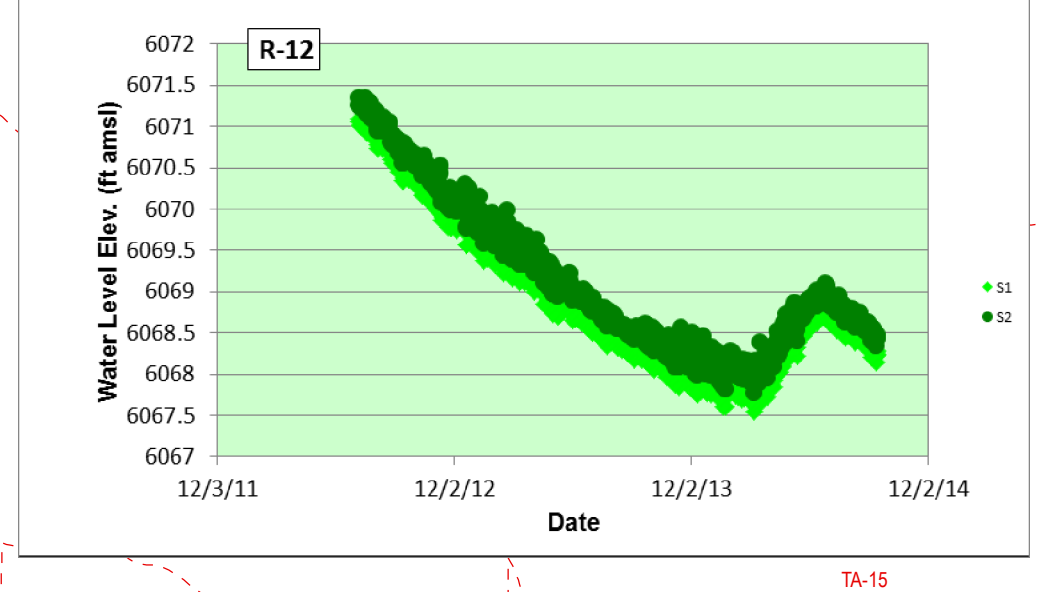
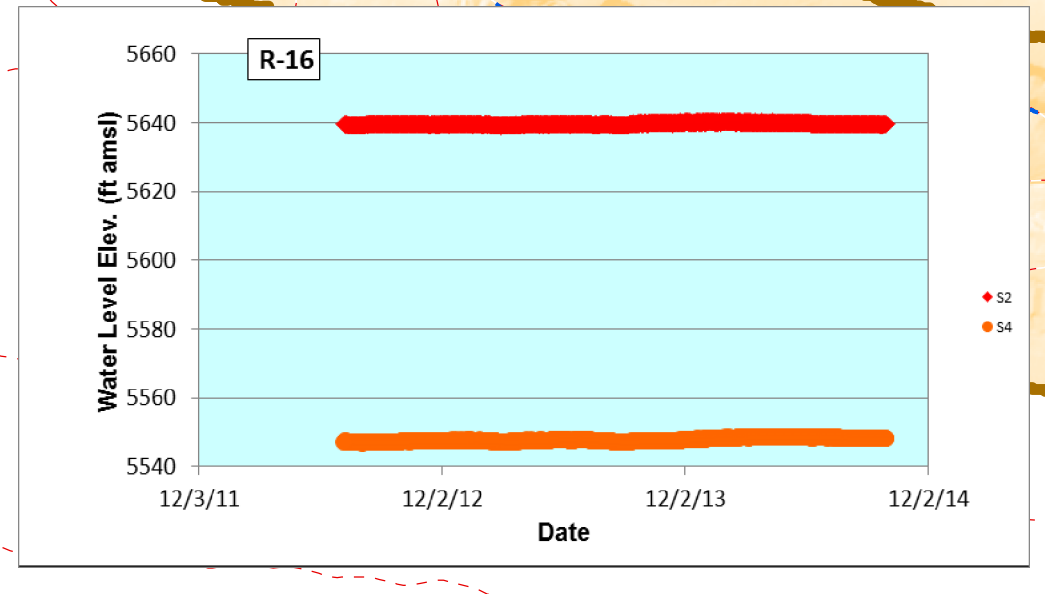
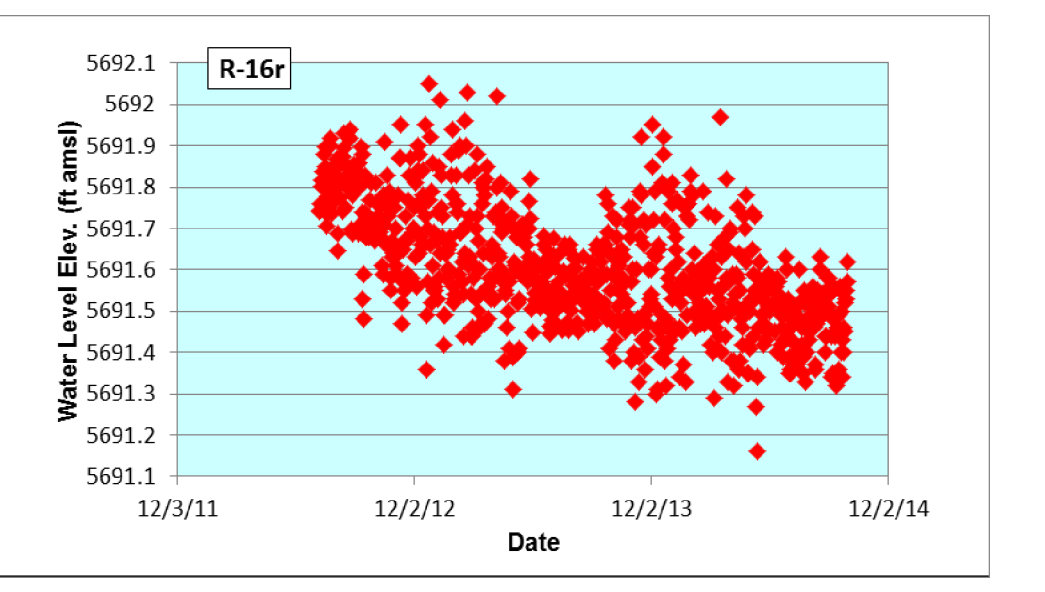
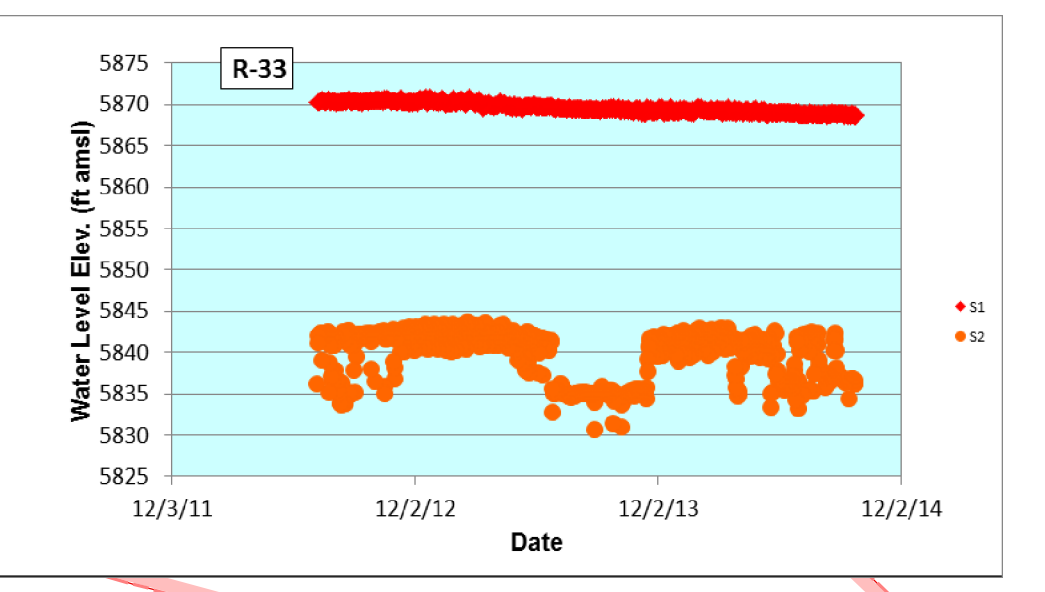
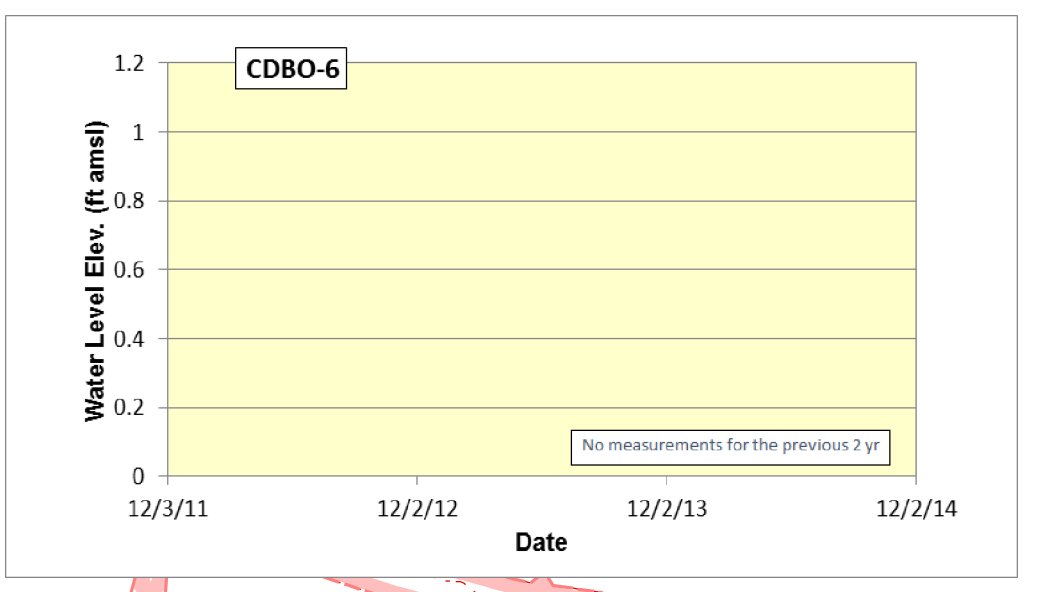
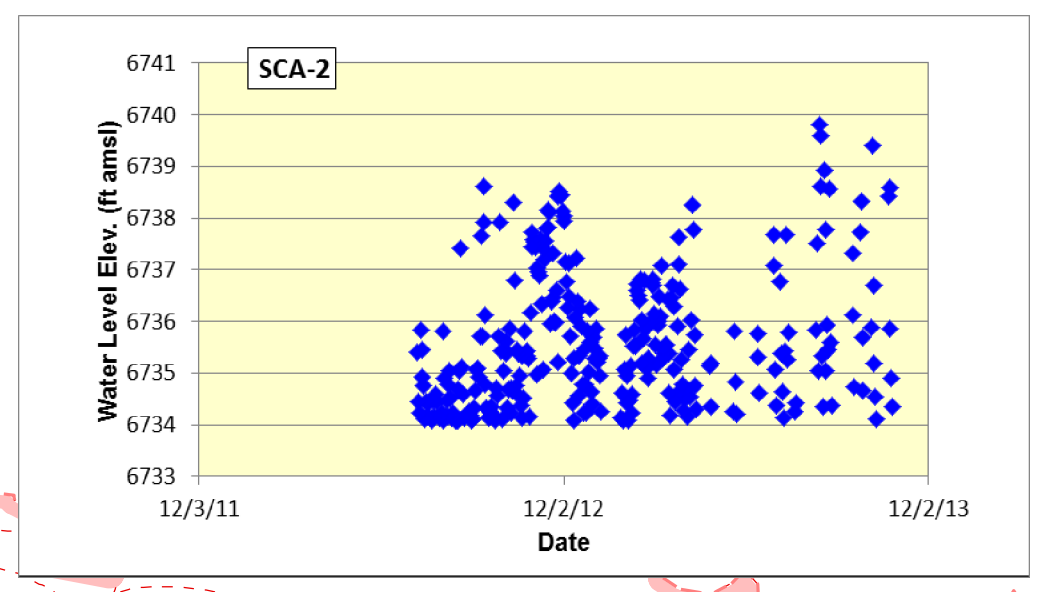
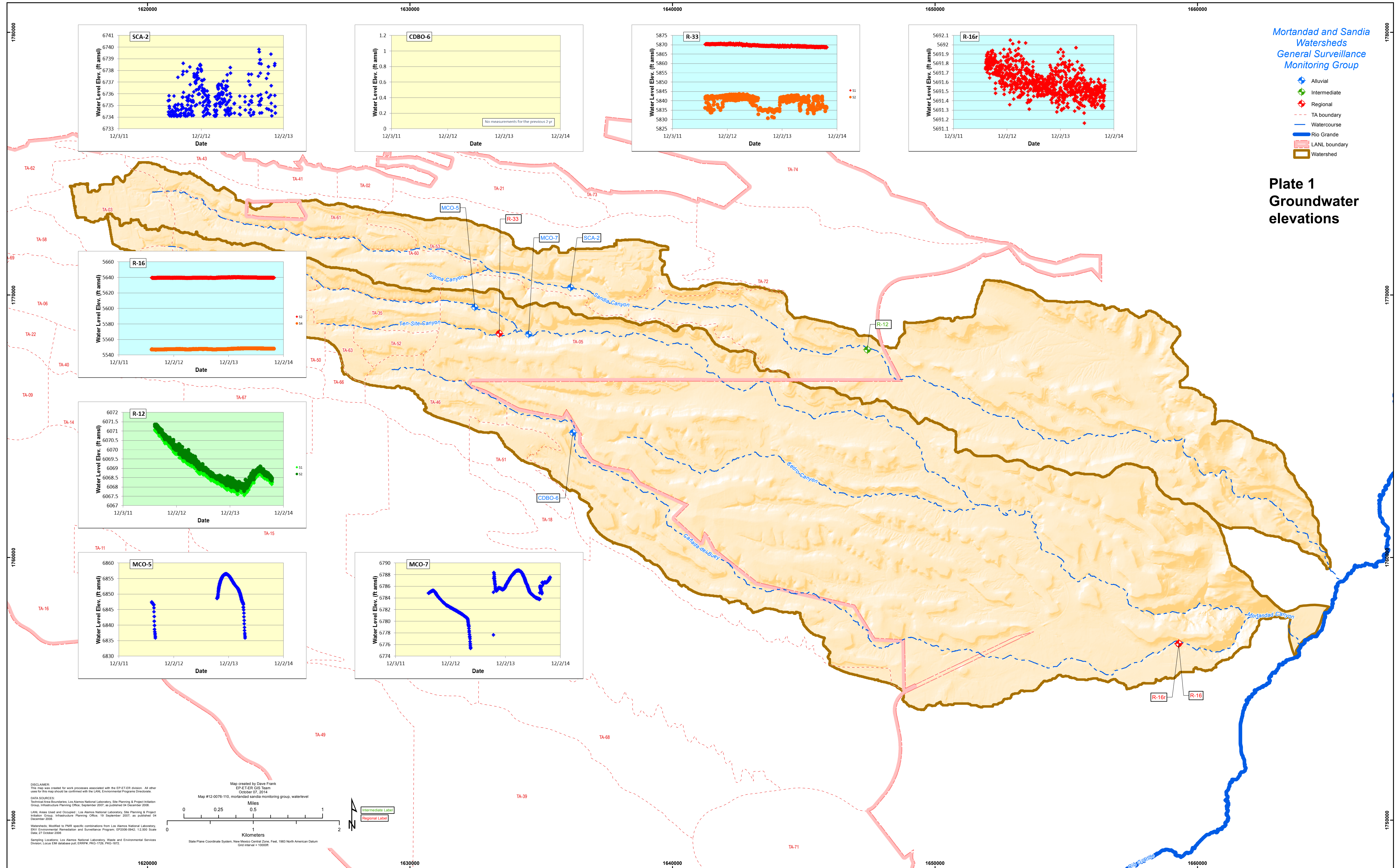


Mortadad and Sandia Watersheds
General Surveillance
Monitoring Group

- ◆ Alluvial
- ◆ Intermediate
- ◆ Regional
- TA boundary
- Watercourse
- Rio Grande
- LANL boundary
- Watershed

Plate 1 Groundwater elevations



DISCLAIMER:
This map was created for work processes associated with the EP-ET-ER division. All other uses of this map should be confirmed with the LANL Environmental Programs Directorate.
DATA SOURCES:
Technical Area Boundaries, Los Alamos National Laboratory, Site Planning & Project Initiation Group, Infrastructure Planning Office, September 2007, as published 04 December 2008.
LANL Areas Used and Occupied, Los Alamos National Laboratory, Site Planning & Project Initiation Group, Infrastructure Planning Office, 19 September 2007, as published 04 December 2008.
Watersheds, Modified to PMR specific combinations from Los Alamos National Laboratory, ENV Environmental Remediation and Surveillance Program, EP2008-0842, 1:2,500 Scale Data, 27 October 2008.
Sampling Locations, Los Alamos National Laboratory, Waste and Environmental Services Division, Local ERM database path: ERM/PMR/1750_PMG-182.

Map created by Dave Frank
EP-ET-ER GIS Team
October 07, 2014
Map #12-0076-110, mortadad sandia monitoring group, waterlevel

Miles
0 0.25 0.5 1

Kilometers
0 1 2

Scale Plane Coordinate System, New Mexico Central Zone, Feet, 1983 North American Datum
Grid Interval = 1000ft

Intermediate Label
Regional Label