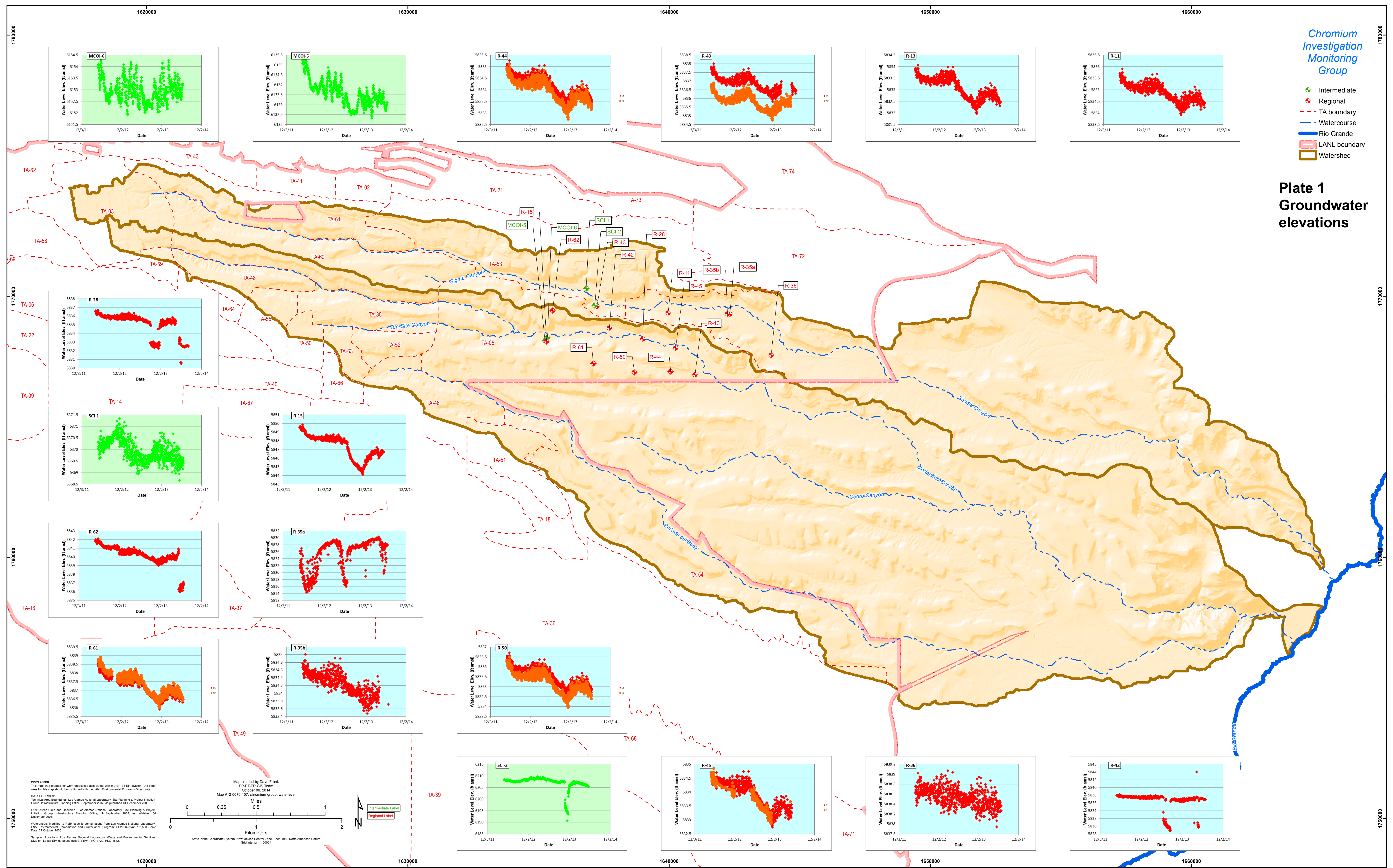


### Chromium Investigation Monitoring Group

- ◆ Intermediate
- ◆ Regional
- - - TA boundary
- - - Watercourse
- Rio Grande
- LANL boundary
- Watershed

## Plate 1 Groundwater elevations



**DISCLAIMER:**  
This map was created for work processes associated with the EP-1-ER division. All other uses for this map should be confirmed with the LANL Environmental Programs Directorate.

**DATA SOURCES:**  
Technical Area Boundaries, Los Alamos National Laboratory, Site Planning & Project Initiation Group, Infrastructure Planning Office, September 2007, as published October 2008.  
LANL Areas Used and Occupied, Los Alamos National Laboratory, Site Planning & Project Initiation Group, Infrastructure Planning Office, 19 September 2007, as published 04 December 2008.  
Waterheads, Modified to PWR specific contributions from Los Alamos National Laboratory, ENV Environmental Remediation and Surveillance Program, EP2008-042, 12-2008, Scale Date: 27 October 2009.  
Sampling Locations, Los Alamos National Laboratory, Waste and Environmental Services Division, LWSR 588 operations and EP2008-042, 12-2008.

Map created by Dave Frank  
EP-ET-ER GIS Team  
October 05, 2014  
Map #12-0076-107, chromium group, waterlevel

Miles  
0 0.25 0.5 1

Kilometers  
0 1 2

Intermediate Label  
Regional Label