

## LETTER REPORT FOR THE RESULTS OF ANALYTICAL SAMPLING FOR VOLATILE ORGANIC COMPOUNDS AT MATERIAL DISPOSAL AREA B

### INTRODUCTION

This letter report provides the analytical results for samples collected at Material Disposal Area (MDA) B at Technical Area 21 (TA-21) between September 9 and 12, 2014. In its approval with modifications of the investigation/remediation report for MDA B, dated July 8, 2014, the New Mexico Environment Department (NMED) directed Los Alamos National Laboratory (LANL or the Laboratory) to submit a work plan proposing sampling and analysis appropriate for demonstrating that volatile organic compounds (VOCs) are below residential soil screening levels at the site (LANL 2013, 243675; NMED 2014, 525003).

### DRILLING AND SAMPLING

Twenty-two boreholes were drilled to collect undisturbed samples for VOC analyses in accordance with the NMED-approved work plan (LANL 2014, 260201; NMED 2014, 525180). Figure 1 shows the location of the boreholes, and Figures 2 through 23 are the borehole logs. At each borehole, a sample was collected below the clean fill/tuff (Qbt 3) interface of the former excavated trenches at depths between 6 and 12 in.

The boreholes were drilled using a hollow-stem auger with a split-spoon sampler lined with brass sleeves. The sleeve representing the target sample depths was capped on each end and retained for VOC analysis (U.S. Environmental Protection Agency Method 8260B). Per the approved work plan, the brass sleeve ends were covered with a sheet of Teflon tape, capped, and duct-taped before they were submitted to the Laboratory's Sample Management Office.

### RESULTS

Table 1 shows the samples collected and field-screening results. All the analytical data are provided in Attachment 1 on CD submitted with this letter report.

VOCs were not detected in any of the samples collected in 2014. Therefore, the Laboratory has demonstrated that VOC concentrations from samples collected at the site are below residential soil screening levels (SSLs).

### REFERENCES

*The following list includes all documents cited in this report. Parenthetical information following each reference provides the author(s), publication date, and ER ID. This information is also included in text citations. ER IDs are assigned by the Environmental Programs Directorate's Records Processing Facility (RPF) and are used to locate the document at the RPF and, where applicable, in the master reference set.*

*Copies of the master reference set are maintained at the NMED Hazardous Waste Bureau and the Directorate. The set was developed to ensure that the administrative authority has all material needed to review this document, and it is updated with every document submitted to the administrative authority. Documents previously submitted to the administrative authority are not included.*

LANL (Los Alamos National Laboratory), June 2013. "Investigation/Remediation Report for Material Disposal Area B, Solid Waste Management Unit 21-015, Revision 2," Los Alamos National Laboratory document LA-UR-13-24556, Los Alamos, New Mexico. (LANL 2013, 243675)

LANL (Los Alamos National Laboratory), August 2014. "Drilling Work Plan for Material Disposal Area B Volatile Organic Compound Sampling," Los Alamos National Laboratory document LA-UR-14-26305, Los Alamos, New Mexico. (LANL 2014, 260201)

NMED (New Mexico Environment Department), July 8, 2014. "Investigation/Remediation Report for Material Disposal Area B, Solid Waste Management Unit 21-015, Revision 2, Approval with Modifications," New Mexico Environment Department letter to P. Maggiore (DOE-NA-LA) and J.D. Mousseau (LANL) from J.E. Kieling (NMED-HWB), Santa Fe, New Mexico. (NMED 2014, 525003)

NMED (New Mexico Environment Department), September 16, 2014. "Approval, Drilling Work Plan for Material Disposal Area B Volatile Organic Compound Sampling," New Mexico Environment Department letter to P. Maggiore (DOE-NA-LA) and J.D. Mousseau (LANL) from J.E. Kieling (NMED-HWB), Santa Fe, New Mexico. (NMED 2014, 525180)



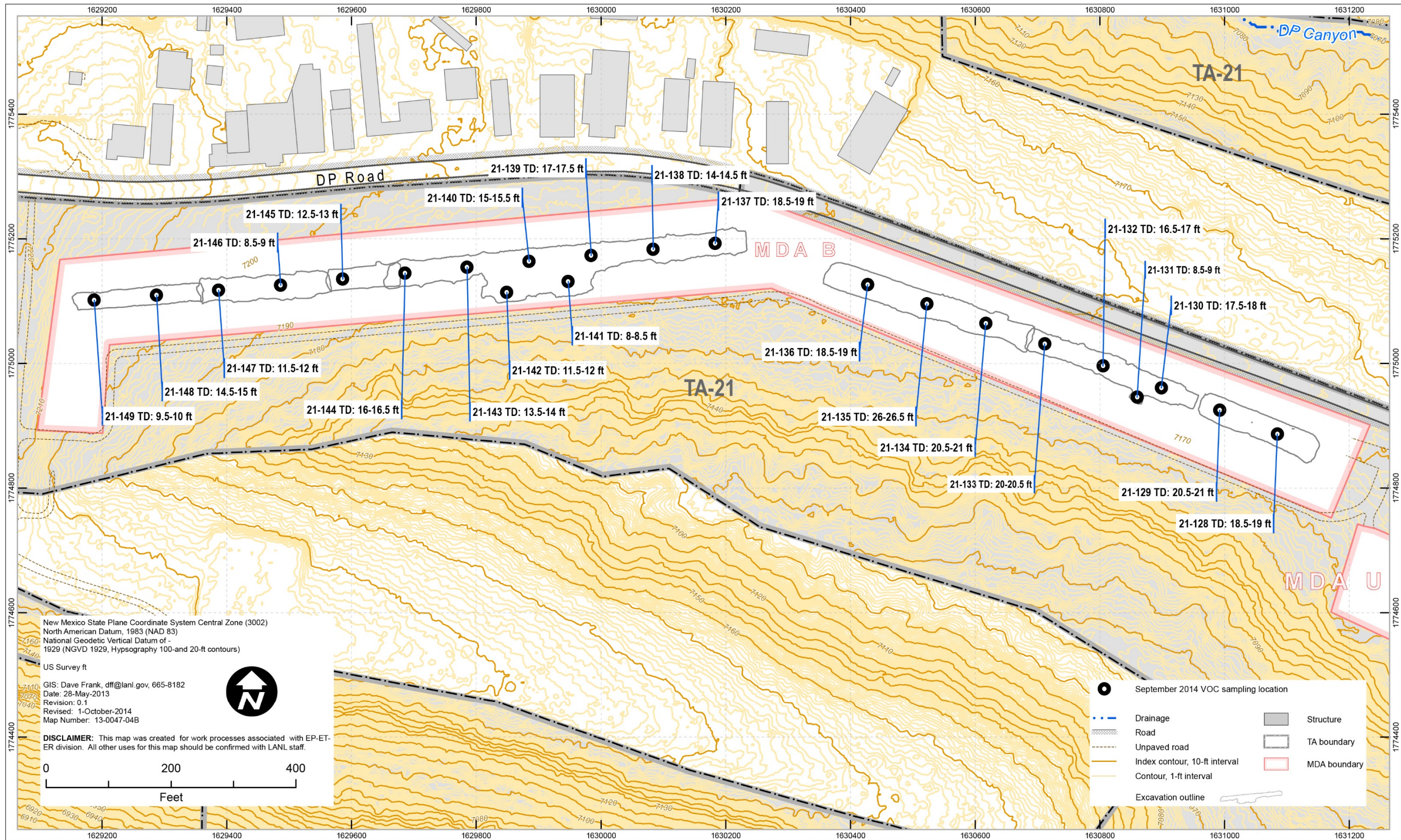


Figure 1 Borehole locations at MDA B



DEPTH (ft bgs)		RECOVERY (%)	FIELD SCREENING RESULTS: PID (ppm)/gross-alpha, -beta, -gamma (dpm)	SAMPLE ID	LITHOLOGICAL DESCRIPTION	LITHOLOGICAL UNIT	NOTES
0					<b>Construction Fill:</b>		
0.5					Fill: Unconsolidated silty pebble gravel with fine to coarse sand, detritus of mixed volcanic (dacite, black-orange vitrophyre) and exotic quartzite and granite (indicating base-coarse gravel)	Fill	
1							
1.5							
2							
2.5							
3							
3.5							
4							
4.5							
5							
5.5							
6							
6.5							
7							
7.5							
8							
8.5							
9							
9.5							
10							
10.5							
11							
11.5							
12							
12.5							
13							
13.5							
14							
14.5							
15							
15.5							
16							
16.5							
17							
17.5					<b>Unit 3 of the Tschirege Member of the Bandelier Tuff:</b>	Qbt 3	Tuff contact at 17.5 ft bgs
18					AFT: Gray to light purple, moderately welded, crystal-rich, minor lithics and pumice-poor.		Sample interval 18.5–19 ft bgs
18.5		100%	PID= 0.9	MD21-14-86033			
19			α= 21				
19.5			β/γ= 1941				
20							
20.5							
21							
21.5							
22							

Figure 2 Borehole log for location 21-128



Borehole ID: 21-129		TA: 21		Drill Depth: 21 ft		Total Pages: 1 of 1	
Drillers: T. Rose and D. Toney			Date: 9/09/14			Background Radiological Screening	
Drilling Company: Precision			Equipment: CME-75			α: 34 dpm	β/γ: 1484 dpm
Sampling Equipment: 2.5" ID 2.5' Length Brass Sleeve Lined Split Core-Barrel				Logged By: A. Stocker, A. Tosh and S. Muggleton			
DEPTH (ft bgs)	RECOVERY (%)	FIELD SCREENING RESULTS: PID (ppm)/gross-alpha, -beta, -gamma (dpm)	SAMPLE ID	LITHOLOGICAL DESCRIPTION	LITHOLOGICAL UNIT	NOTES	
0				<b>Construction Fill:</b>	Fill		
0.5				Fill: Unconsolidated silty pebble gravel with fine			
1				to coarse sand, detritus of mixed volcanic			
1.5				(dacite, black-orange vitrophyre) and exotic			
2				quartzite and granite (indicating base-coarse			
2.5				gravel)			
3							
3.5							
4							
4.5							
5							
5.5							
6							
6.5							
7							
7.5							
8							
8.5							
9							
9.5							
10							
10.5							
11							
11.5							
12							
12.5							
13							
13.5							
14							
14.5							
15							
15.5							
16							
16.5							
17							
17.5							
18							
18.5							
19							
19.5							
20				<b>Unit 3 of the Tschirege Member of the</b>	Qbt 3	Tuff contact at 20 ft bgs	
20.5	100%	PID= 0.0	MD21-14-86034	<b>Bandelier Tuff:</b>		Sample interval 20.5–21 ft bgs	
21		α= 26		AFT: Gray to light purple, moderately well-			
21.5		β/γ= 1984		welded, crystal-rich, minor lithics and pumice-			
22				poor. Clay-filled, 1 cm thick, oxidized vertical			
22.5				fracture present.			

Figure 3 Borehole log for location 21-129

Borehole ID: 21-130		TA: 21		Drill Depth: 18 ft		Total Pages: 1 of 1	
Drillers: T. Rose and D. Toney			Date: 9/09/14			Background Radiological Screening	
Drilling Company: Precision			Equipment: CME-75			α: 34 dpm	β/γ: 1484 dpm
Sampling Equipment: 2.5" ID 2.5' Length Brass Sleeve Lined Split Core-Barrel				Logged By: A. Stocker, A. Tosh and S. Muggleton			
DEPTH (ft bgs)	RECOVERY (%)	FIELD SCREENING RESULTS: PID (ppm)/gross-alpha, -beta, -gamma (dpm)	SAMPLE ID	LITHOLOGICAL DESCRIPTION	LITHOLOGICAL UNIT	NOTES	
0				<b>Construction Fill:</b>	Fill		
0.5				Fill: Unconsolidated silty pebble gravel with			
1				fine to coarse sand, detritus of mixed volcanic			
1.5				(dacite, black-orange vitrophyre) and exotic			
2				quartzite and granite (indicating base-coarse			
2.5				gravel)			
3							
3.5							
4							
4.5							
5							
5.5							
6							
6.5							
7							
7.5							
8							
8.5							
9							
9.5							
10							
10.5							
11							
11.5							
12							
12.5							
13							
13.5							
14							
14.5							
15							
15.5							
16							
16.5							
17				<b>Unit 3 of the Tschirege Member of the</b>	Qbt 3	Tuff contact at 17 ft bgs	
17.5	100%	PID= 0.7	MD21-14-86035	<b>Bandelier Tuff:</b>		Sample interval 17.5–18 ft bgs	
18		α= 47		AFT: Gray to light purple, moderately well-		<b>Note:</b> Field Duplicate MD21-14-86055 collected at this location	
18.5		β/γ= 2170		welded, crystal-rich, minor mafics and			
19				pumice-poor.			
19.5							
20							
20.5							
21							
21.5							
22							
22.5							

Figure 4 Borehole log for location 21-130



Borehole ID: 21-131		TA: 21		Drill Depth: 9 ft		Total Pages: 1 of 1	
Drillers: T. Rose and D. Toney			Date: 9/10/14			Background Radiological Screening	
Drilling Company: Precision			Equipment: CME-75			α: 29 dpm	β/γ: 1598 dpm
Sampling Equipment: 2.5" ID 2.5' Length Brass Sleeve Lined Split Core-Barrel				Logged By: A. Stocker, A. Tosh and S. Muggleton			
DEPTH (ft bgs)	RECOVERY (%)	FIELD SCREENING RESULTS: PID (ppm)/gross-alpha, -beta, -gamma (dpm)	SAMPLE ID	LITHOLOGICAL DESCRIPTION	LITHOLOGICAL UNIT	NOTES	
0				<b>Construction Fill:</b>	Fill		
0.5				Fill: Unconsolidated silty pebble gravel with			
1				fine to coarse sand, detritus of mixed volcanic			
1.5				(dacite, black-orange vitrophyre) and exotic			
2				quartzite and granite (indicating base-coarse			
2.5				gravel)			
3							
3.5							
4							
4.5							
5							
5.5							
6							
6.5							
7							
7.5							
8				<b>Unit 3 of the Tschirege Member of the</b>	Qbt 3	Tuff contact at 8 ft bgs	
8.5	100%	PID= 0.1	MD21-14-86036	<b>Bandelier Tuff:</b>		Sample interval 8.5–9 ft bgs	
9		α= 52		AFT: Gray to light purple, moderately well-			
9.5		β/γ= 2030		welded, crystal-rich, minor mafics and			
10				pumice-poor. Minor reddish brown oxidized			
10.5				staining and clay-filled vein present			
11							
11.5							
12							
12.5							
13							
13.5							
14							
14.5							
15							
15.5							
16							
16.5							
17							
17.5							
18							
18.5							
19							
19.5							
20							
20.5							
21							
21.5							
22							
22.5							

Figure 5 Borehole log for location 21-131

Borehole ID: 21-132		TA: 21		Drill Depth: 17 ft		Total Pages: 1 of 1	
Drillers: T. Rose and D. Toney			Date: 9/10/14			Background Radiological Screening	
Drilling Company: Precision			Equipment: CME-75			α: 29 dpm	β/γ: 1598 dpm
Sampling Equipment: 2.5" ID 2.5' Length Brass Sleeve Lined Split Core-Barrel				Logged By: A. Stocker, A. Tosh and S. Muggleton			
DEPTH (ft bgs)	RECOVERY (%)	FIELD SCREENING RESULTS: PID (ppm)/gross-alpha, -beta, -gamma (dpm)	SAMPLE ID	LITHOLOGICAL DESCRIPTION	LITHOLOGICAL UNIT	NOTES	
0				<b>Construction Fill:</b>			
0.5				Fill: Unconsolidated silty pebble gravel with fine to coarse sand, detritus of mixed volcanic (dacite, black-orange vitrophyre) and exotic quartzite and granite (indicating base-coarse gravel)	Fill		
1							
1.5							
2							
2.5							
3							
3.5							
4							
4.5							
5							
5.5							
6							
6.5							
7							
7.5							
8							
8.5							
9							
9.5							
10							
10.5							
11							
11.5							
12							
12.5							
13							
13.5							
14							
14.5							
15							
15.5							
16				<b>Unit 3 of the Tschirege Member of the</b>	Qbt 3	Tuff contact at 16 ft bgs	
16.5	100%	PID= 0.1	MD21-14-86037	<b>Bandelier Tuff:</b>		Sample interval 16.5–17 ft bgs	
17		α= 21		AFT: Gray to light purple, moderately well-welded, crystal-rich, minor mafics and pumice-poor.			
17.5		β/γ= 2100					
18							
18.5							
19							
19.5							
20							
20.5							
21							
21.5							
22							
22.5							

Figure 6 Borehole log for location 21-132



Borehole ID: 21-133		TA: 21		Drill Depth: 20.5ft		Total Pages: 1 of 1	
Drillers: T. Rose and D. Toney			Date: 9/10/14			Background Radiological Screening	
Drilling Company: Precision			Equipment: CME-75			α: 29 dpm	β/γ: 1598 dpm
Sampling Equipment: 2.5" ID 2.5' Length Brass Sleeve Lined Split Core-Barrel				Logged By: A. Stocker, A. Tosh and S. Muggleton			
DEPTH (ft bgs)	RECOVERY (%)	FIELD SCREENING RESULTS: PID (ppm)/gross-alpha, -beta, -gamma (dpm)	SAMPLE ID	LITHOLOGICAL DESCRIPTION	LITHOLOGICAL UNIT	NOTES	
0				<b>Construction Fill:</b>	Fill		
0.5				Fill: Unconsolidated silty pebble gravel with			
1				fine to coarse sand, detritus of mixed volcanic			
1.5				(dacite, black-orange vitrophyre) and exotic			
2				quartzite and granite (indicating base-coarse			
2.5				gravel)			
3							
3.5							
4							
4.5							
5							
5.5							
6							
6.5							
7							
7.5							
8							
8.5							
9							
9.5							
10							
10.5							
11							
11.5							
12							
12.5							
13							
13.5							
14							
14.5							
15							
15.5							
16							
16.5							
17							
17.5							
18							
18.5							
19							
19.5				<b>Unit 3 of the Tschirege Member of the</b>	Qbt 3	Tuff contact at 19.5 ft bgs	
20	100%	PID= 0.0	MD21-14-86038	<b>Bandelier Tuff:</b>		Sample interval 20–20.5 ft bgs	
20.5		α= 21		AFT: Gray to light purple, moderately well-			
21		β/γ= 1920		welded, crystal-rich, minor mafics and			
21.5				pumice-poor.			
22							
22.5							

Figure 7 Borehole log for location 21-133

Borehole ID: 21-134		TA: 21		Drill Depth: 21 ft		Total Pages: 1 of 1	
Drillers: T. Rose and D. Toney			Date: 9/10/14			Background Radiological Screening	
Drilling Company: Precision			Equipment: CME-75			α: 29 dpm	β/γ: 1598 dpm
Sampling Equipment: 2.5" ID 2.5' Length Brass Sleeve Lined Split Core-Barrel				Logged By: A. Stocker, A. Tosh and S. Muggleton			
DEPTH (ft bgs)	RECOVERY (%)	FIELD SCREENING RESULTS: PID (ppm)/gross-alpha, -beta, -gamma (dpm)	SAMPLE ID	LITHOLOGICAL DESCRIPTION	LITHOLOGICAL UNIT	NOTES	
0				<b>Construction Fill:</b>	Fill		
0.5				Fill: Unconsolidated silty pebble gravel with fine to coarse sand, detritus of mixed volcanic (dacite, black-orange vitrophyre) and exotic quartzite and granite (indicating base-coarse gravel)			
1							
1.5							
2							
2.5							
3							
3.5							
4							
4.5							
5							
5.5							
6							
6.5							
7							
7.5							
8							
8.5							
9							
9.5							
10							
10.5							
11							
11.5							
12							
12.5							
13							
13.5							
14							
14.5							
15							
15.5							
16							
16.5							
17							
17.5							
18							
18.5							
19							
19.5							
20				<b>Unit 3 of the Tschirege Member of the</b>	Qbt 3	Tuff contact at 20 ft bgs	
20.5	100%	PID= 0.0	MD21-14-86039	<b>Bandelier Tuff:</b>		Sample interval 20.5–21 ft bgs	
21		α= 57		AFT: Gray to light purple, poorly welded,			
21.5		β/γ= 2210		crystal-rich, minor mafics and pumice-poor.			
22							
22.5							

Figure 8 Borehole log for location 21-134



Borehole ID: 21-135		TA: 21		Drill Depth: 26.5 ft		Total Pages: 1 of 1	
Drillers: T. Rose and D. Toney				Date: 9/10/14		Background Radiological Screening	
Drilling Company: Precision			Equipment: CME-75			α: 29 dpm	β/γ: 1598 dpm
Sampling Equipment: 2.5" ID 2.5' Length Brass Sleeve Lined Split Core-Barrel					Logged By: A. Stocker, A. Tosh and S. Muggleton		
DEPTH (ft bgs)	RECOVERY (%)	FIELD SCREENING RESULTS: PID (ppm)/gross-alpha, -beta, -gamma (dpm)	SAMPLE ID	LITHOLOGICAL DESCRIPTION	LITHOLOGICAL UNIT	NOTES	
0				<b>Construction Fill:</b>			
0.5				Fill: Unconsolidated silty pebble gravel with fine to coarse sand, detritus of mixed volcanic (dacite, black-orange vitrophyre) and exotic quartzite and granite (indicating base-coarse gravel)	Fill		
1							
1.5							
2							
2.5							
<del>Break in Scale</del>							
15					Fill		
15.5							
16							
16.5							
17							
17.5							
18							
18.5							
19							
19.5							
20							
20.5							
21							
21.5							
22							
22.5							
23							
23.5							
24							
24.5							
25							
25.5				<b>Unit 3 of the Tschirege Member of the</b>	Qbt 3	Tuff contact at 25.5 ft bgs	
26	100%	PID= 0.0	MD21-14-86040	<b>Bandelier Tuff:</b>		Sample interval 26–26.5 ft bgs	
26.5		α= 57		AFT: Gray to light purple, moderately well-welded, crystal-rich, minor mafics and pumice-poor.			
27		β/γ= 2110					
27.5							
28							
28.5							
29							
29.5							
30							
30.5							
31							
31.5							

Figure 9 Borehole log for location 21-135

Borehole ID: 21-136		TA: 21		Drill Depth: 19 ft		Total Pages: 1 of 1	
Drillers: T. Rose and D. Toney			Date: 9/11/14			Background Radiological Screening	
Drilling Company: Precision			Equipment: CME-75			α: 21 dpm	β/γ: 1529 dpm
Sampling Equipment: 2.5" ID 2.5' Length Brass Sleeve Lined Split Core-Barrel				Logged By: A. Stocker, A. Tosh and S. Muggleton			
DEPTH (ft bgs)	RECOVERY (%)	FIELD SCREENING RESULTS: PID (ppm)/gross-alpha, -beta, -gamma (dpm)	SAMPLE ID	LITHOLOGICAL DESCRIPTION	LITHOLOGICAL UNIT	NOTES	
0				<b>Construction Fill:</b>	Fill		
0.5				Fill: Unconsolidated silty pebble gravel with fine to coarse sand, detritus of mixed volcanic (dacite, black-orange vitrophyre) and exotic quartzite and granite (indicating base-coarse gravel)			
1							
1.5							
2							
2.5							
3							
3.5							
4							
4.5							
5							
5.5							
6							
6.5							
7							
7.5							
8							
8.5							
9							
9.5							
10							
10.5							
11							
11.5							
12							
12.5							
13							
13.5							
14							
14.5							
15							
15.5							
16							
16.5							
17							
17.5							
18				<b>Unit 3 of the Tschirege Member of the Bandelier Tuff:</b>	Qbt 3	Tuff contact at 18 ft bgs	
18.5	100%	PID= 0.0	MD21-14-86041	<b>Bandelier Tuff:</b>		Sample interval 18.5–19 ft bgs	
19		α= 26		AFT: Gray to light purple, moderately well-welded, crystal-rich, minor mafics and pumice-poor.			
19.5		β/γ= 1997					
20							
20.5							
21							
21.5							
22							
22.5							

Figure 10 Borehole log for location 21-136

Borehole ID: 21-137		TA: 21		Drill Depth: 19 ft		Total Pages: 1 of 1	
Drillers: T. Rose and D. Toney			Date: 9/11/14			Background Radiological Screening	
Drilling Company: Precision			Equipment: CME-75			α: 21 dpm	β/γ: 1529 dpm
Sampling Equipment: 2.5" ID 2.5' Length Brass Sleeve Lined Split Core-Barrel				Logged By: A. Stocker, A. Tosh and S. Muggleton			
DEPTH (ft bgs)	RECOVERY (%)	FIELD SCREENING RESULTS: PID (ppm)/gross-alpha, -beta, -gamma (dpm)	SAMPLE ID	LITHOLOGICAL DESCRIPTION	LITHOLOGICAL UNIT	NOTES	
0				<b>Construction Fill:</b>	Fill		
0.5				Fill: Unconsolidated silty pebble gravel with			
1				fine to coarse sand, detritus of mixed volcanic			
1.5				(dacite, black-orange vitrophyre) and exotic			
2				quartzite and granite (indicating base-coarse			
2.5				gravel)			
3							
3.5							
4							
4.5							
5							
5.5							
6							
6.5							
7							
7.5							
8							
8.5							
9							
9.5							
10							
10.5							
11							
11.5							
12							
12.5							
13							
13.5							
14							
14.5							
15							
15.5							
16							
16.5							
17							
17.5							
18				<b>Unit 3 of the Tschirege Member of the</b>	Qbt 3	Tuff contact at 18 ft bgs	
18.5	100%	PID= 0.0	MD21-14-86042	<b>Bandelier Tuff:</b>		Sample interval 18.5–19 ft bgs	
19		α= 26		AFT: Gray to light purple, poorly to moderately			
19.5		β/γ= 2020		well-welded, crystal-rich, minor mafics and			
20				pumice-poor.			
20.5							
21							
21.5							
22							
22.5							

Figure 11 Borehole log for location 21-137

Borehole ID: 21-138		TA: 21		Drill Depth: 14.5 ft		Total Pages: 1 of 1	
Drillers: T. Rose and D. Toney			Date: 9/11/14			Background Radiological Screening	
Drilling Company: Precision			Equipment: CME-75			α: 21 dpm	β/γ: 1529 dpm
Sampling Equipment: 2.5" ID 2.5' Length Brass Sleeve Lined Split Core-Barrel				Logged By: A. Stocker, A. Tosh and S. Muggleton			
DEPTH (ft bgs)	RECOVERY (%)	FIELD SCREENING RESULTS: PID (ppm)/gross-alpha, -beta, -gamma (dpm)	SAMPLE ID	LITHOLOGICAL DESCRIPTION	LITHOLOGICAL UNIT	NOTES	
0				<b>Construction Fill:</b> Fill: Unconsolidated silty pebble gravel with fine to coarse sand, detritus of mixed volcanic (dacite, black-orange vitrophyre) and exotic quartzite and granite (indicating base-coarse gravel)	Fill		
0.5							
1							
1.5							
2							
2.5							
3							
3.5							
4							
4.5							
5							
5.5							
6							
6.5							
7							
7.5							
8							
8.5							
9							
9.5							
10							
10.5							
11							
11.5							
12							
12.5							
13							
13.5				<b>Unit 3 of the Tschirege Member of the</b>	Qbt 3	Tuff contact at 13.5 ft bgs	
14	100%	PID= 0.1	MD21-14-86043	<b>Bandelier Tuff:</b>		Sample interval 14–14.5 ft bgs	
14.5		α= 42		AFT: Gray to light purple, moderately well-welded, crystal-rich, minor mafics and pumice-poor. Weathered fractures present.			
15		β/γ= 2210					
15.5							
16							
16.5							
17							
17.5							
18							
18.5							
19							
19.5							
20							
20.5							
21							
21.5							
22							
22.5							

Figure 12 Borehole log for location 21-138



Borehole ID: 21-139		TA: 21		Drill Depth: 17.5 ft		Total Pages: 1 of 1	
Drillers: T. Rose and D. Toney			Date: 9/11/14			Background Radiological Screening	
Drilling Company: Precision			Equipment: CME-75			α: 21 dpm	β/γ: 1529 dpm
Sampling Equipment: 2.5" ID 2.5' Length Brass Sleeve Lined Split Core-Barrel				Logged By: A. Stocker, A. Tosh and S. Muggleton			
DEPTH (ft bgs)	RECOVERY (%)	FIELD SCREENING RESULTS: PID (ppm)/gross-alpha, -beta, -gamma (dpm)	SAMPLE ID	LITHOLOGICAL DESCRIPTION	LITHOLOGICAL UNIT	NOTES	
0				<b>Construction Fill:</b>	Fill		
0.5				Fill: Unconsolidated silty pebble gravel with fine to coarse sand, detritus of mixed volcanic (dacite, black-orange vitrophyre) and exotic quartzite and granite (indicating base-coarse gravel)			
1							
1.5							
2							
2.5							
3							
3.5							
4							
4.5							
5							
5.5							
6							
6.5							
7							
7.5							
8							
8.5							
9							
9.5							
10							
10.5							
11							
11.5							
12							
12.5							
13							
13.5							
14							
14.5							
15							
15.5							
16							
16.5				<b>Unit 3 of the Tschirege Member of the Bandelier Tuff:</b>	Qbt 3	Tuff contact at 16.5 ft bgs	
17	100%	PID= 0.0	MD21-14-86044	<b>AFT:</b> Gray to light purple, moderately well-welded, crystal-rich, minor mafics and pumice-poor.		Sample interval 17–17.5 ft bgs	
17.5		α= 42					
18		β/γ= 2240					
18.5							
19							
19.5							
20							
20.5							
21							
21.5							
22							
22.5							

Figure 13 Borehole log for location 21-139

Borehole ID: 21-140		TA: 21		Drill Depth: 15.5 ft		Total Pages: 1 of 1	
Drillers: T. Rose and D. Toney			Date: 9/11/14			Background Radiological Screening	
Drilling Company: Precision			Equipment: CME-75		α: 21 dpm	β/γ: 1529 dpm	
Sampling Equipment: 2.5" ID 2.5' Length Brass Sleeve Lined Split Core-Barrel				Logged By: A. Stocker, A. Tosh and S. Muggleton			
DEPTH (ft bgs)	RECOVERY (%)	FIELD SCREENING RESULTS: PID (ppm)/gross-alpha, -beta, -gamma (dpm)	SAMPLE ID	LITHOLOGICAL DESCRIPTION	LITHOLOGICAL UNIT	NOTES	
0				<b>Construction Fill:</b>			
0.5				Fill: Unconsolidated silty pebble gravel with fine to coarse sand, detritus of mixed volcanic (dacite, black-orange vitrophyre) and exotic quartzite and granite (indicating base-coarse gravel)	Fill		
1							
1.5							
2							
2.5							
3							
3.5							
4							
4.5							
5							
5.5							
6							
6.5							
7							
7.5							
8							
8.5							
9							
9.5							
10							
10.5							
11							
11.5							
12							
12.5							
13							
13.5							
14				<b>Unit 3 of the Tschirege Member of the Bandelier Tuff:</b>	Qbt 3	Tuff contact at 14 ft bgs	
14.5				AFT: Gray to light purple, moderately well-welded, crystal-rich, minor mafics and pumice-poor.		Sample interval 15–15.5 ft bgs	
15	100%	PID= 0.0	MD21-14-86045				
15.5		α= 47					
16		β/γ= 2770					
16.5							
17							
17.5							
18							
18.5							
19							
19.5							
20							
20.5							
21							
21.5							
22							
22.5							

Figure 14 Borehole log for location 21-140

Borehole ID: 21-141		TA: 21		Drill Depth: 8.5 ft		Total Pages: 1 of 1		
Drillers: T. Rose and D. Toney			Date: 9/11/14			Background Radiological Screening		
Drilling Company: Precision			Equipment: CME-75		α: 21 dpm		β/γ: 1529 dpm	
Sampling Equipment: 2.5" ID 2.5' Length Brass Sleeve Lined Split Core-Barrel				Logged By: A. Stocker, A. Tosh and S. Muggleton				
DEPTH (ft bgs)	RECOVERY (%)	FIELD SCREENING RESULTS: PID (ppm)/gross-alpha, -beta, -gamma (dpm)	SAMPLE ID	LITHOLOGICAL DESCRIPTION	LITHOLOGICAL UNIT	NOTES		
0				<b>Construction Fill:</b>				
0.5				Fill: Unconsolidated silty pebble gravel with fine to coarse sand, detritus of mixed volcanic (dacite, black-orange vitrophyre) and exotic quartzite and granite (indicating base-coarse gravel)	Fill			
1								
1.5								
2								
2.5								
3								
3.5								
4								
4.5								
5								
5.5								
6								
6.5								
7				<b>Unit 3 of the Tschirege Member of the Bandelier Tuff:</b>	Qbt 3		Tuff contact at 7 ft bgs	
7.5				AFT: Gray to light purple, moderately well-welded, crystal-rich, minor mafics and pumice-poor.				
8	100%	PID= 0.0	MD21-14-86046					Sample interval 8–8.5 ft bgs
8.5		α= 73						
9		β/γ= 2390						
9.5								
10								
10.5								
11								
11.5								
12								
12.5								
13								
13.5								
14								
14.5								
15								
15.5								
16								
16.5								
17								
17.5								
18								
18.5								
19								
19.5								
20								
20.5								
21								
21.5								
22								
22.5								

Figure 15 Borehole log for location 21-141

Borehole ID: 21-142		TA: 21		Drill Depth: 12.5 ft		Total Pages: 1 of 1	
Drillers: T. Rose and D. Toney			Date: 9/11/14			Background Radiological Screening	
Drilling Company: Precision			Equipment: CME-75			α: 21 dpm	β/γ: 1529 dpm
Sampling Equipment: 2.5" ID 2.5' Length Brass Sleeve Lined Split Core-Barrel					Logged By: A. Stocker, A. Tosh and S. Muggleton		
DEPTH (ft bgs)	RECOVERY (%)	FIELD SCREENING RESULTS: PID (ppm)/gross-alpha, -beta, -gamma (dpm)	SAMPLE ID	LITHOLOGICAL DESCRIPTION	LITHOLOGICAL UNIT	NOTES	
0				<b>Construction Fill:</b>			
0.5				Fill: Unconsolidated silty pebble gravel with fine to coarse sand, detritus of mixed volcanic (dacite, black-orange vitrophyre) and exotic quartzite and granite (indicating base-coarse gravel)	Fill		
1							
1.5							
2							
2.5							
3							
3.5							
4							
4.5							
5							
5.5							
6							
6.5							
7							
7.5							
8							
8.5							
9							
9.5							
10							
10.5							
11				<b>Unit 3 of the Tschirege Member of the</b>	Qbt 3	Tuff contact at 11 ft bgs	
11.5	100%	PID= 0.0	MD21-14-86047	<b>Bandelier Tuff:</b>		Sample interval 11.5–12 ft bgs	
12		α= 21		AFT: Gray to light purple, poorly welded, crystal-rich, minor mafics and pumice-poor.			
12.5		β/γ= 2670					
13							
13.5							
14							
14.5							
15							
15.5							
16							
16.5							
17							
17.5							
18							
18.5							
19							
19.5							
20							
20.5							
21							
21.5							
22							
22.5							

Figure 16 Borehole log for location 21-142



Borehole ID: 21-143		TA: 21		Drill Depth: 14 ft		Total Pages: 1 of 1	
Drillers: T. Rose and D. Toney			Date: 9/11/14			Background Radiological Screening	
Drilling Company: Precision			Equipment: CME-75			α: 21 dpm      β/γ: 1529 dpm	
Sampling Equipment: 2.5" ID 2.5' Length Brass Sleeve Lined Split Core-Barrel				Logged By: A. Stocker, A. Tosh and S. Muggleton			
DEPTH (ft bgs)	RECOVERY (%)	FIELD SCREENING RESULTS: PID (ppm)/gross-alpha, -beta, -gamma (dpm)	SAMPLE ID	LITHOLOGICAL DESCRIPTION	LITHOLOGICAL UNIT	NOTES	
0				<b>Construction Fill:</b> Fill: Unconsolidated silty pebble gravel with fine to coarse sand, detritus of mixed volcanic (dacite, black-orange vitrophyre) and exotic quartzite and granite (indicating base-coarse gravel)	Fill		
0.5							
1							
1.5							
2							
2.5							
3							
3.5							
4							
4.5							
5							
5.5							
6							
6.5							
7							
7.5							
8							
8.5							
9							
9.5							
10							
10.5							
11							
11.5							
12							
12.5							
13				<b>Unit 3 of the Tschirege Member of the</b>	Qbt 3	Tuff contact at 13 ft bgs	
13.5	100%	PID= 0.0	MD21-14-86048	<b>Bandelier Tuff:</b>		Sample interval 13.5–14 ft bgs	
14		α= 121		AFT: Gray to light purple, very well-welded, crystal-rich, minor mafics and pumice-poor.			
14.5		β/γ= 2140					
15							
15.5							
16							
16.5							
17							
17.5							
18							
18.5							
19							
19.5							
20							
20.5							
21							
21.5							
22							
22.5							

Figure 17 Borehole log for location 21-143

Borehole ID: 21-144		TA: 21		Drill Depth: 16.5 ft		Total Pages: 1 of 1	
Drillers: T. Rose and D. Toney			Date: 9/12/14			Background Radiological Screening	
Drilling Company: Precision			Equipment: CME-75			α: 22 dpm	β/γ: 1481 dpm
Sampling Equipment: 2.5" ID 2.5' Length Brass Sleeve Lined Split Core-Barrel				Logged By: A. Stocker, A. Tosh and S. Muggleton			
DEPTH (ft bgs)	RECOVERY (%)	FIELD SCREENING RESULTS: PID (ppm)/gross-alpha, -beta, -gamma (dpm)	SAMPLE ID	LITHOLOGICAL DESCRIPTION	LITHOLOGICAL UNIT	NOTES	
0				<b>Construction Fill:</b>	Fill		
0.5				Fill: Unconsolidated silty pebble gravel with			
1				fine to coarse sand, detritus of mixed volcanic			
1.5				(dacite, black-orange vitrophyre) and exotic			
2				quartzite and granite (indicating base-coarse			
2.5				gravel)			
3							
3.5							
4							
4.5							
5							
5.5							
6							
6.5							
7							
7.5							
8							
8.5							
9							
9.5							
10							
10.5							
11							
11.5							
12							
12.5							
13							
13.5							
14							
14.5							
15							
15.5				<b>Unit 3 of the Tschirege Member of the</b>	Qbt 3	Tuff contact at 15.5 ft bgs	
16	100%	PID= 0.0	MD21-14-86049	<b>Bandelier Tuff:</b>		Sample interval 16–16.5 ft bgs	
16.5		α= 31		AFT: Gray to light purple, moderately well-			
17		β/γ= 2230		welded, crystal-rich, minor mafics and			
17.5				pumice-poor.			
18							
18.5							
19							
19.5							
20							
20.5							
21							
21.5							
22							
22.5							

Figure 18 Borehole log for location 21-144

Borehole ID: 21-145		TA: 21		Drill Depth: 13 ft		Total Pages: 1 of 1	
Drillers: T. Rose and D. Toney			Date: 9/12/14			Background Radiological Screening	
Drilling Company: Precision			Equipment: CME-75			α: 22 dpm	β/γ: 1481 dpm
Sampling Equipment: 2.5" ID 2.5' Length Brass Sleeve Lined Split Core-Barrel				Logged By: A. Stocker, A. Tosh and S. Muggleton			
DEPTH (ft bgs)	RECOVERY (%)	FIELD SCREENING RESULTS: PID (ppm)/gross-alpha, -beta, -gamma (dpm)	SAMPLE ID	LITHOLOGICAL DESCRIPTION	LITHOLOGICAL UNIT	NOTES	
0				<b>Construction Fill:</b>			
0.5				Fill: Unconsolidated silty pebble gravel with fine to coarse sand, detritus of mixed volcanic (dacite, black-orange vitrophyre) and exotic quartzite and granite (indicating base-coarse gravel)	Fill		
1							
1.5							
2							
2.5							
3							
3.5							
4							
4.5							
5							
5.5							
6							
6.5							
7							
7.5							
8							
8.5							
9							
9.5							
10							
10.5							
11							
11.5							
12				<b>Unit 3 of the Tschirege Member of the Bandelier Tuff:</b>	Qbt 3	Tuff contact at 12 ft bgs	
12.5	100%	PID= 0.0	MD21-14-86050	AFT: Gray to light purple, moderately well-welded, crystal-rich, minor mafics and pumice-poor. Moderate oxidized staining present.		Sample interval 12.5–13 ft bgs	
13		α= 47					
13.5		β/γ= 2010					
14							
14.5							
15							
15.5							
16							
16.5							
17							
17.5							
18							
18.5							
19							
19.5							
20							
20.5							
21							
21.5							
22							
22.5							

Figure 19 Borehole log for location 21-145

Borehole ID: 21-146		TA: 21		Drill Depth: 9 ft		Total Pages: 1 of 1	
Drillers: T. Rose and D. Toney			Date: 9/12/14			Background Radiological Screening	
Drilling Company: Precision			Equipment: CME-75		α: 22 dpm		β/γ: 1481 dpm
Sampling Equipment: 2.5" ID 2.5' Length Brass Sleeve Lined Split Core-Barrel				Logged By: A. Stocker, A. Tosh and S. Muggleton			
DEPTH (ft bgs)	RECOVERY (%)	FIELD SCREENING RESULTS: PID (ppm)/gross-alpha, -beta, -gamma (dpm)	SAMPLE ID	LITHOLOGICAL DESCRIPTION	LITHOLOGICAL UNIT	NOTES	
0				<b>Construction Fill:</b>	Fill		
0.5				Fill: Unconsolidated silty pebble gravel with			
1				fine to coarse sand, detritus of mixed volcanic			
1.5				(dacite, black-orange vitrophyre) and exotic			
2				quartzite and granite (indicating base-coarse			
2.5				gravel)			
3							
3.5							
4							
4.5							
5							
5.5							
6							
6.5							
7							
7.5							
8				<b>Unit 3 of the Tschirege Member of the</b>	Qbt 3	Tuff contact at 8 ft bgs	
8.5	100%	PID= 0.0	MD21-14-86051	<b>Bandelier Tuff:</b>		Sample interval 8.5–9 ft bgs	
9		α= 274		AFT: Gray to light purple, moderately well-			
9.5		β/γ= 2430		welded, crystal-rich, minor mafics and			
10				pumice-poor.			
10.5							
11							
11.5							
12							
12.5							
13							
13.5							
14							
14.5							
15							
15.5							
16							
16.5							
17							
17.5							
18							
18.5							
19							
19.5							
20							
20.5							
21							
21.5							
22							
22.5							

Figure 20 Borehole log for location 21-146



Borehole ID: 21-147		TA: 21		Drill Depth: 12 ft		Total Pages: 1 of 1	
Drillers: T. Rose and D. Toney			Date: 9/12/14			Background Radiological Screening	
Drilling Company: Precision			Equipment: CME-75			α: 22 dpm	β/γ: 1481 dpm
Sampling Equipment: 2.5" ID 2.5' Length Brass Sleeve Lined Split Core-Barrel				Logged By: A. Stocker, A. Tosh and S. Muggleton			
DEPTH (ft bgs)	RECOVERY (%)	FIELD SCREENING RESULTS: PID (ppm)/gross-alpha, -beta, -gamma (dpm)	SAMPLE ID	LITHOLOGICAL DESCRIPTION	LITHOLOGICAL UNIT	NOTES	
0				<b>Construction Fill:</b>			
0.5				Fill: Unconsolidated silty pebble gravel with fine to coarse sand, detritus of mixed volcanic (dacite, black-orange vitrophyre) and exotic quartzite and granite (indicating base-coarse gravel)	Fill		
1							
1.5							
2							
2.5							
3							
3.5							
4							
4.5							
5							
5.5							
6							
6.5							
7							
7.5							
8							
8.5							
9							
9.5							
10							
10.5							
11				<b>Unit 3 of the Tschirege Member of the</b>	Qbt 3	Tuff contact at 11 ft bgs	
11.5	100%	PID= 0.0	MD21-14-86052	<b>Bandelier Tuff:</b>		Sample interval 11.5–12 ft bgs	
12		α= 31		AFT: Gray to light purple, moderately well-welded, crystal-rich, minor mafics and pumice-poor. Moderate oxidized staining present.			
12.5		β/γ= 2150					
13							
13.5							
14							
14.5							
15							
15.5							
16							
16.5							
17							
17.5							
18							
18.5							
19							
19.5							
20							
20.5							
21							
21.5							
22							
22.5							

Figure 21 Borehole log for location 21-147

Borehole ID: 21-148		TA: 21		Drill Depth: 15 ft		Total Pages: 1 of 1	
Drillers: T. Rose and D. Toney			Date: 9/12/14			Background Radiological Screening	
Drilling Company: Precision			Equipment: CME-75			α: 22 dpm	β/γ: 1481 dpm
Sampling Equipment: 2.5" ID 2.5' Length Brass Sleeve Lined Split Core-Barrel				Logged By: A. Stocker, A. Tosh and S. Muggleton			
DEPTH (ft bgs)	RECOVERY (%)	FIELD SCREENING RESULTS: PID (ppm)/gross-alpha, -beta, -gamma (dpm)	SAMPLE ID	LITHOLOGICAL DESCRIPTION	LITHOLOGICAL UNIT	NOTES	
0				<b>Construction Fill:</b>	Fill		
0.5				Fill: Unconsolidated silty pebble gravel with			
1				fine to coarse sand, detritus of mixed volcanic			
1.5				(dacite, black-orange vitrophyre) and exotic			
2				quartzite and granite (indicating base-coarse			
2.5				gravel)			
3							
3.5							
4							
4.5							
5							
5.5							
6							
6.5							
7							
7.5							
8							
8.5							
9							
9.5							
10							
10.5							
11							
11.5							
12							
12.5							
13							
13.5							
14				<b>Unit 3 of the Tschirege Member of the</b>	Qbt 3	Tuff contact at 14 ft bgs	
14.5	100%	PID= 0.0	MD21-14-86053	<b>Bandelier Tuff:</b>		Sample interval 14.5–15 ft bgs	
15		α= 68		AFT: Gray to light purple, moderately well-			
15.5		β/γ= 2210		welded, crystal-rich, minor mafics and			
16				pumice-poor. Minor oxidized staining present.			
16.5							
17							
17.5							
18							
18.5							
19							
19.5							
20							
20.5							
21							
21.5							
22							
22.5							

Figure 22 Borehole log for location 21-148

Borehole ID: 21-149		TA: 21		Drill Depth: 10 ft		Total Pages: 1 of 1	
Drillers: T. Rose and D. Toney			Date: 9/12/14			Background Radiological Screening	
Drilling Company: Precision			Equipment: CME-75			α: 22 dpm	β/γ: 1481 dpm
Sampling Equipment: 2.5" ID 2.5' Length Brass Sleeve Lined Split Core-Barrel				Logged By: A. Stocker, A. Tosh and S. Muggleton			
DEPTH (ft bgs)	RECOVERY (%)	FIELD SCREENING RESULTS: PID (ppm)/gross-alpha, -beta, -gamma (dpm)	SAMPLE ID	LITHOLOGICAL DESCRIPTION	LITHOLOGICAL UNIT	NOTES	
0				<b>Construction Fill:</b>			
0.5				Fill: Unconsolidated silty pebble gravel with fine to coarse sand, detritus of mixed volcanic (dacite, black-orange vitrophyre) and exotic quartzite and granite (indicating base-coarse gravel)	Fill		
1							
1.5							
2							
2.5							
3							
3.5							
4							
4.5							
5							
5.5							
6							
6.5							
7							
7.5							
8							
8.5							
9				<b>Unit 3 of the Tschirege Member of the</b>	Qbt 3	Tuff contact at 9 ft bgs	
9.5	100%	PID= 0.0	MD21-14-86054	<b>Bandelier Tuff:</b>		Sample interval 9.5–10 ft bgs	
10		α= 68		AFT: Gray to light purple, moderately well-welded, crystal-rich, minor mafics and pumice-poor.		<b>Note:</b> Field Duplicate MD21-14-86056 collected at this location	
10.5		β/γ= 2160					
11							
11.5							
12							
12.5							
13							
13.5							
14							
14.5							
15							
15.5							
16							
16.5							
17							
17.5							
18							
18.5							
19							
19.5							
20							
20.5							
21							
21.5							
22							
22.5							

Figure 23 Borehole log for location 21-149





**Table 1**  
**Samples Collected at MDA B during September 2014 and Corresponding Field-Screening Results**

Field Sample ID	Location ID	Sample Depth (ft)	Media	Purpose	Collection Date	Fill/Tuff Contact (ft)	Alpha Field Screening Background (dpm <sup>a</sup> )	Alpha Field Screening (dpm)	Beta/Gamma Field Screening Background (dpm)	Beta/Gamma Field Screening (dpm)	PID <sup>b</sup> Field Screening Background (ppm)	PID Field Screening (ppm)
MD21-14-86033	21-128	18.5–19.0	QBT3 <sup>c</sup>	REG <sup>d</sup>	9/9/2014	17.5	34	21	1484	1941	0	0.9
MD21-14-86034	21-129	20.5–21.0	QBT3	REG	9/9/2014	20	34	26	1484	1984	0	0
MD21-14-86035	21-130	17.5–18.0	QBT3	REG	9/9/2014	17	34	47	1484	2170	0	0.7
MD21-14-86036	21-131	8.5–9.0	QBT3	REG	9/10/2014	8	29	52	1598	2030	0	0.1
MD21-14-86037	21-132	16.5–17.0	QBT3	REG	9/10/2014	16	29	21	1598	2100	0	0.1
MD21-14-86038	21-133	20.0–20.5	QBT3	REG	9/10/2014	19.5	29	21	1598	1920	0	0
MD21-14-86039	21-134	20.5–21.0	QBT3	REG	9/10/2014	20	29	57	1598	2210	0	0
MD21-14-86040	21-135	26.0–26.5	QBT3	REG	9/10/2014	25.5	29	57	1598	2110	0	0
MD21-14-86041	21-136	18.5–19.0	QBT3	REG	9/11/2014	18	21	26	1529	1997	0	0
MD21-14-86042	21-137	18.5–19.0	QBT3	REG	9/11/2014	18	21	26	1529	2020	0	0
MD21-14-86043	21-138	14.0–14.5	QBT3	REG	9/11/2014	13.5	21	42	1529	2210	0	0.1
MD21-14-86044	21-139	17.0–17.5	QBT3	REG	9/11/2014	16.5	21	42	1529	2040	0	0
MD21-14-86045	21-140	15.0–15.5	QBT3	REG	9/11/2014	14	21	47	1529	2770	0	0
MD21-14-86046	21-141	8.0–8.5	QBT3	REG	9/11/2014	7	21	73	1529	2390	0	0
MD21-14-86047	21-142	11.5–12.0	QBT3	REG	9/11/2014	11	21	21	1529	2670	0	0
MD21-14-86048	21-143	13.5–14.0	QBT3	REG	9/11/2014	13	21	121	1529	2140	0	0
MD21-14-86049	21-144	16–16.5	QBT3	REG	9/12/2014	15.5	22	31	1481	2230	0	0
MD21-14-86050	21-145	12.5–13.0	QBT3	REG	9/12/2014	12	22	47	1481	2010	0	0
MD21-14-86051	21-146	8.5–9.0	QBT3	REG	9/12/2014	8	22	274	1481	2430	0	0
MD21-14-86052	21-147	11.5–12.0	QBT3	REG	9/12/2014	11	22	31	1481	2150	0	0
MD21-14-86053	21-148	14.5–15.0	QBT3	REG	9/12/2014	14	22	68	1481	2210	0	0
MD21-14-86054	21-149	9.5–10.0	QBT3	REG	9/12/2014	9	22	68	1481	2160	0	0

Table 1 (continued)

Field Sample ID	Location ID	Sample Depth (ft)	Media	Purpose	Collection Date	Fill/Tuff Contact (ft)	Alpha Field Screening Background (dpm <sup>a</sup> )	Alpha Field Screening (dpm)	Beta/Gamma Field Screening Background (dpm)	Beta/Gamma Field Screening (dpm)	PID <sup>b</sup> Field Screening Background (ppm)	PID Field Screening (ppm)
MD21-14-86055	21-130	17.5–18.0	QBT3	FD <sup>e</sup>	9/9/2014	17	34	47	1484	2170	0	0.7
MD21-14-86056	21-149	9.5–10.0	QBT3	FD	9/12/2014	9	22	68	1481	2160	0	0
MD21-14-86057	n/a <sup>f</sup>	n/a	n/a	FTB <sup>g</sup>	9/11/2014	n/a	n/a	n/a	n/a	n/a	n/a	n/a
MD21-14-86058	n/a	n/a	n/a	FTB	9/10/2014	n/a	n/a	n/a	n/a	n/a	n/a	n/a
MD21-14-87107	n/a	n/a	n/a	FTB	9/12/2014	n/a	n/a	n/a	n/a	n/a	n/a	n/a

<sup>a</sup> dpm = Disintegrations per minute.

<sup>b</sup> PID = Photoionization detector.

<sup>c</sup> QBT3 = Tuff.

<sup>d</sup> REG = Regular investigation sample.

<sup>e</sup> FD = Field duplicate.

<sup>f</sup> n/a = Not applicable.

<sup>g</sup> FTB = Field trip blank.

# **Attachment 1**

---

*Analytical Data*

