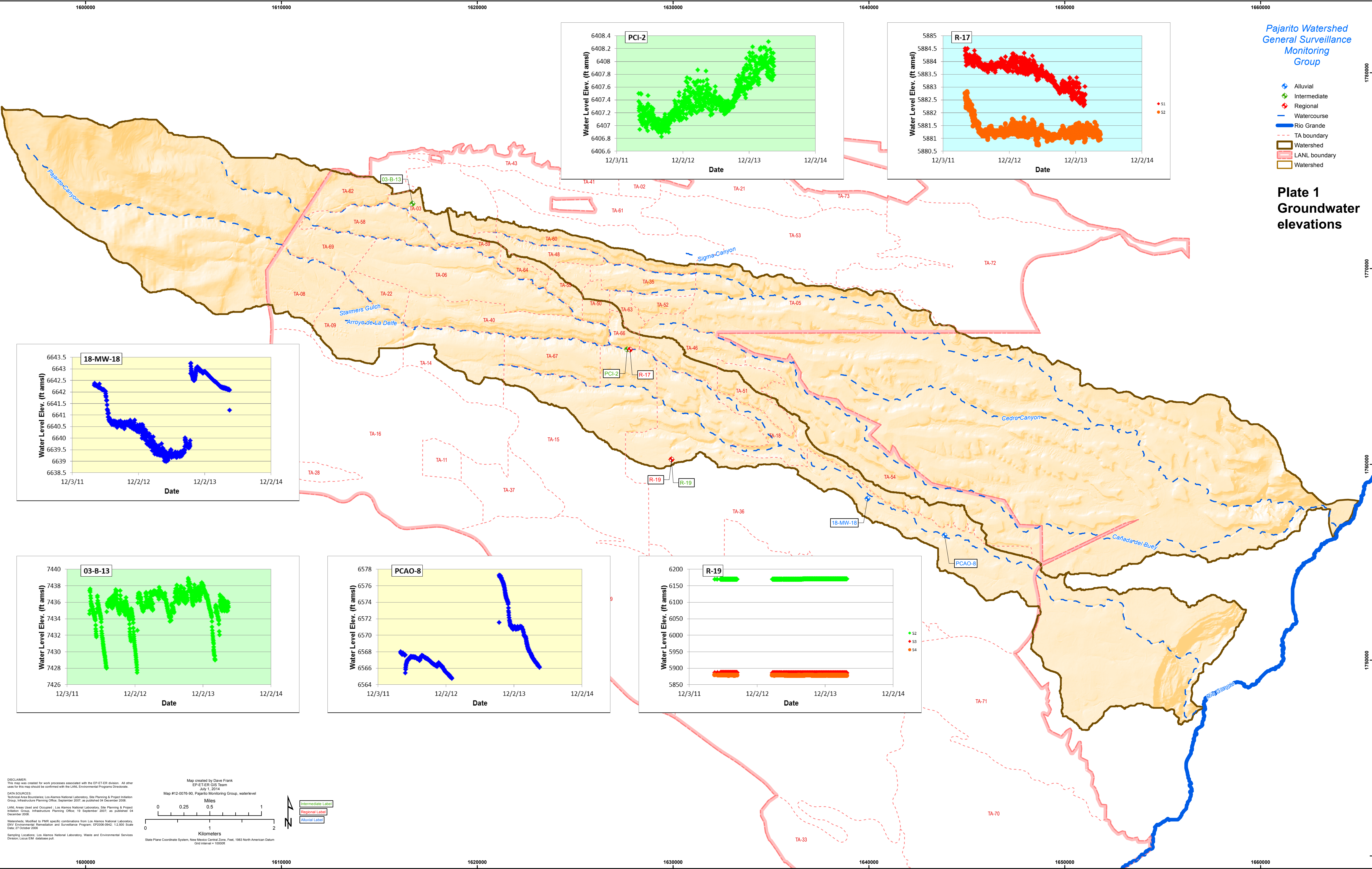
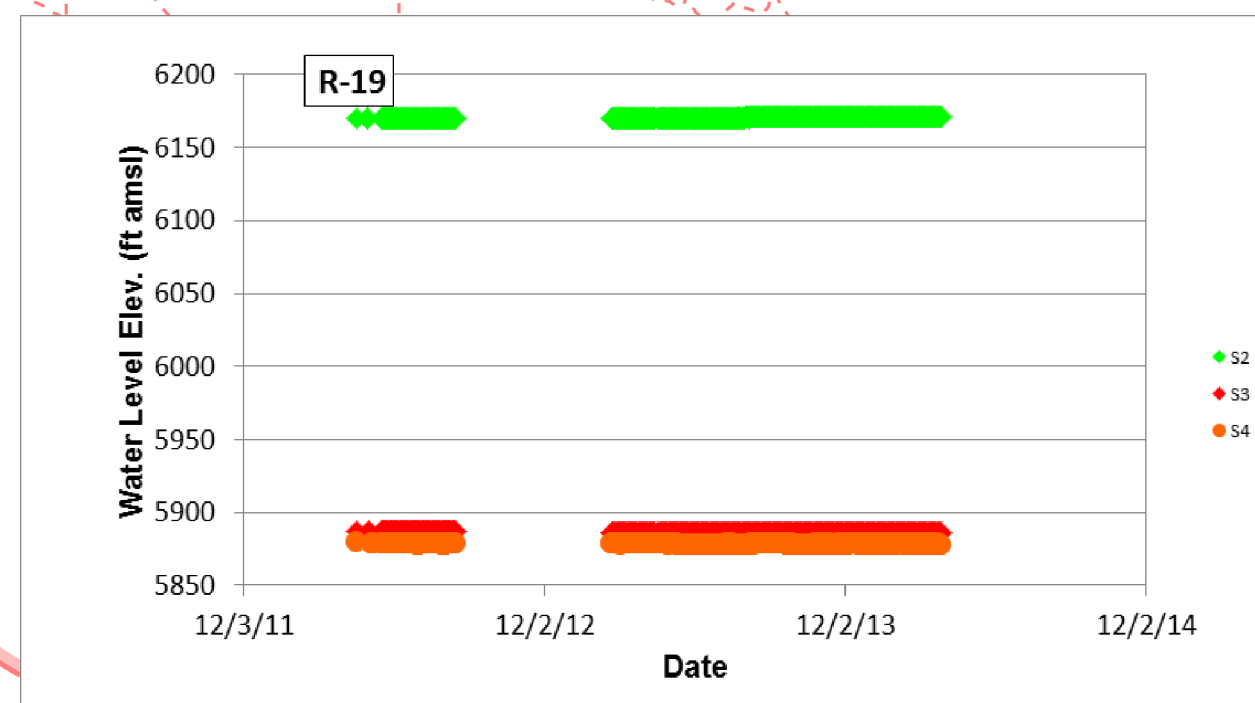
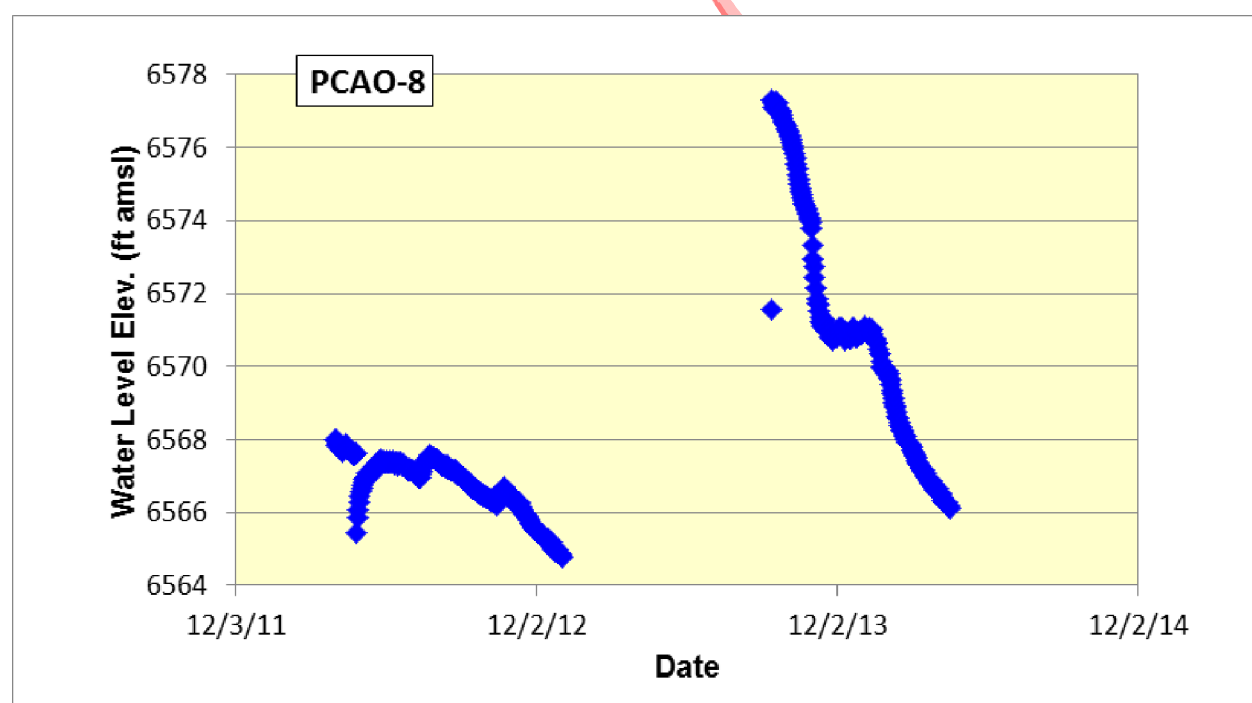
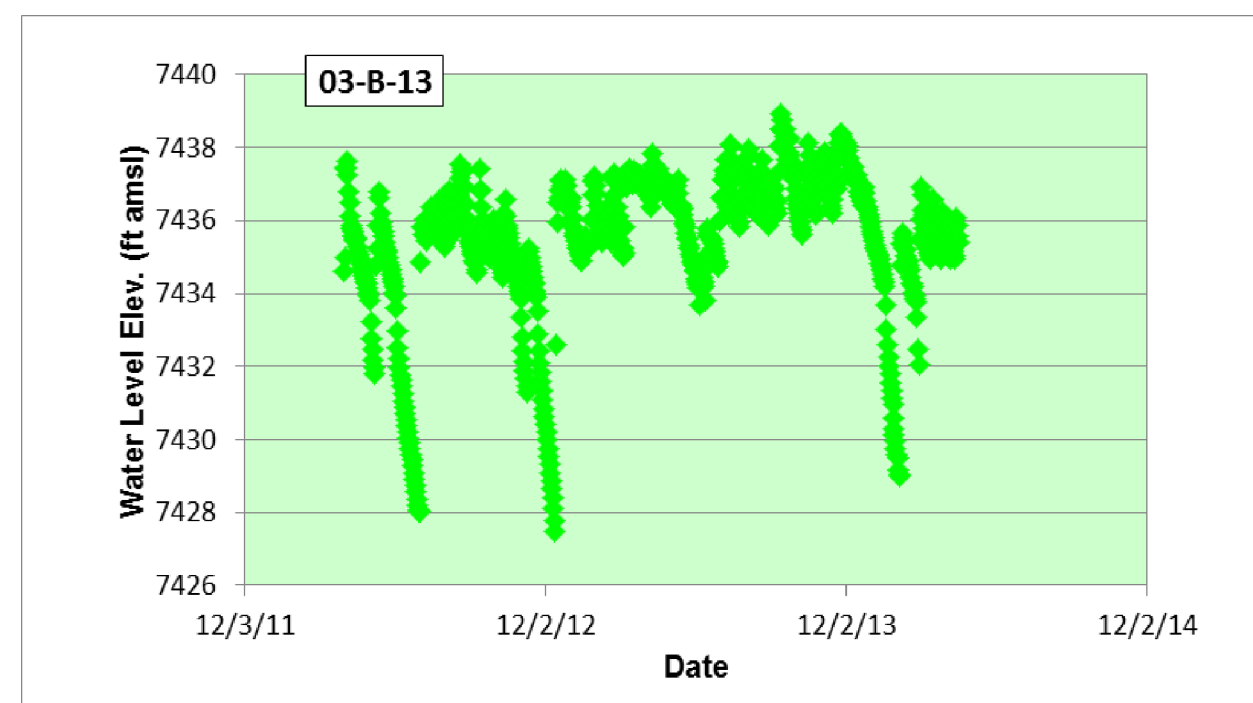
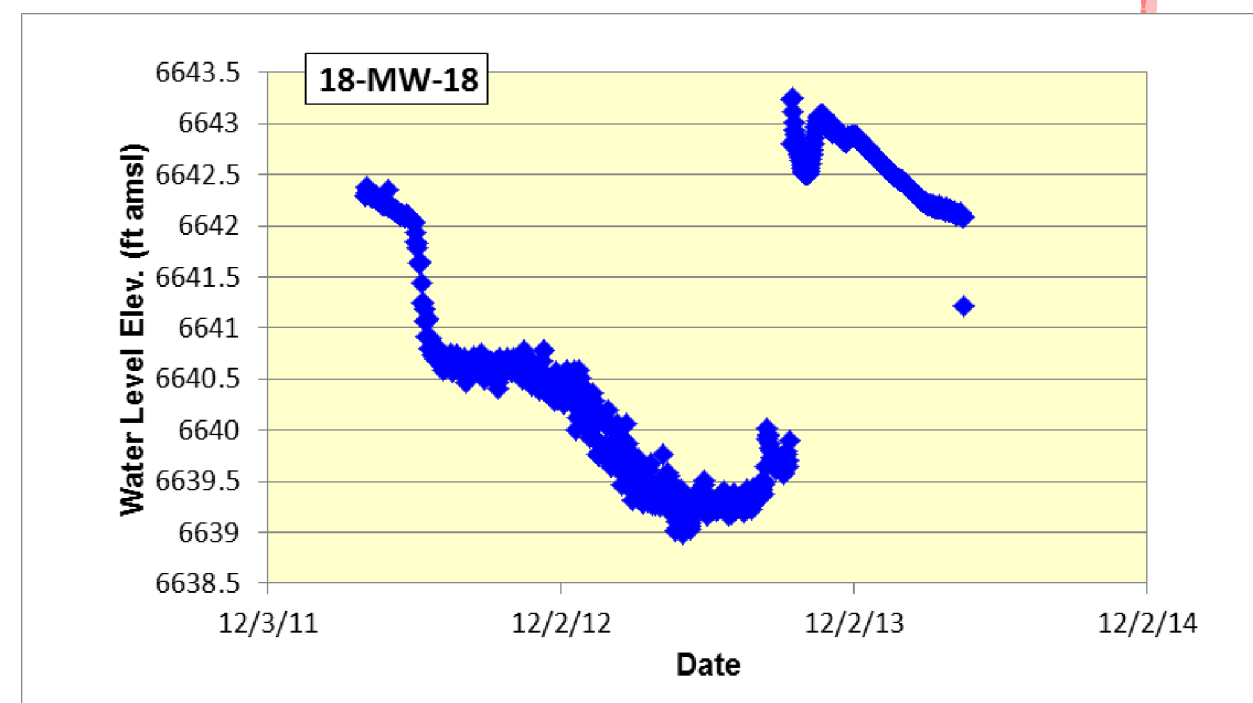
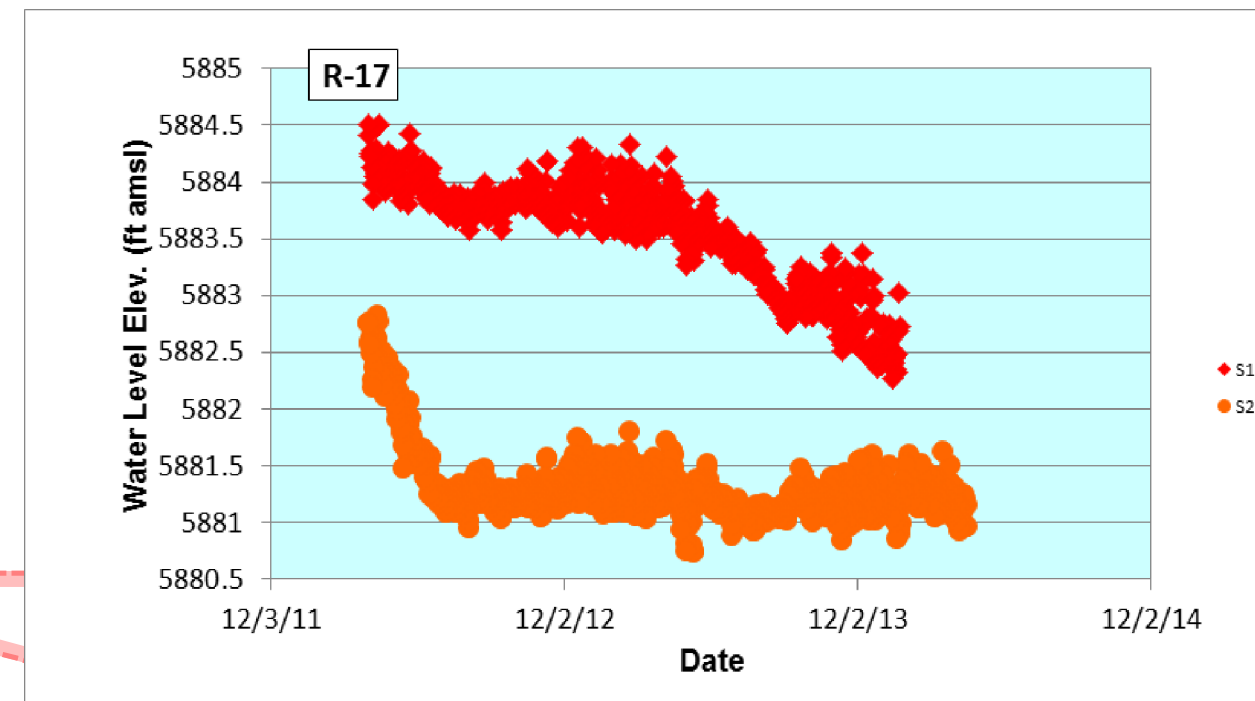
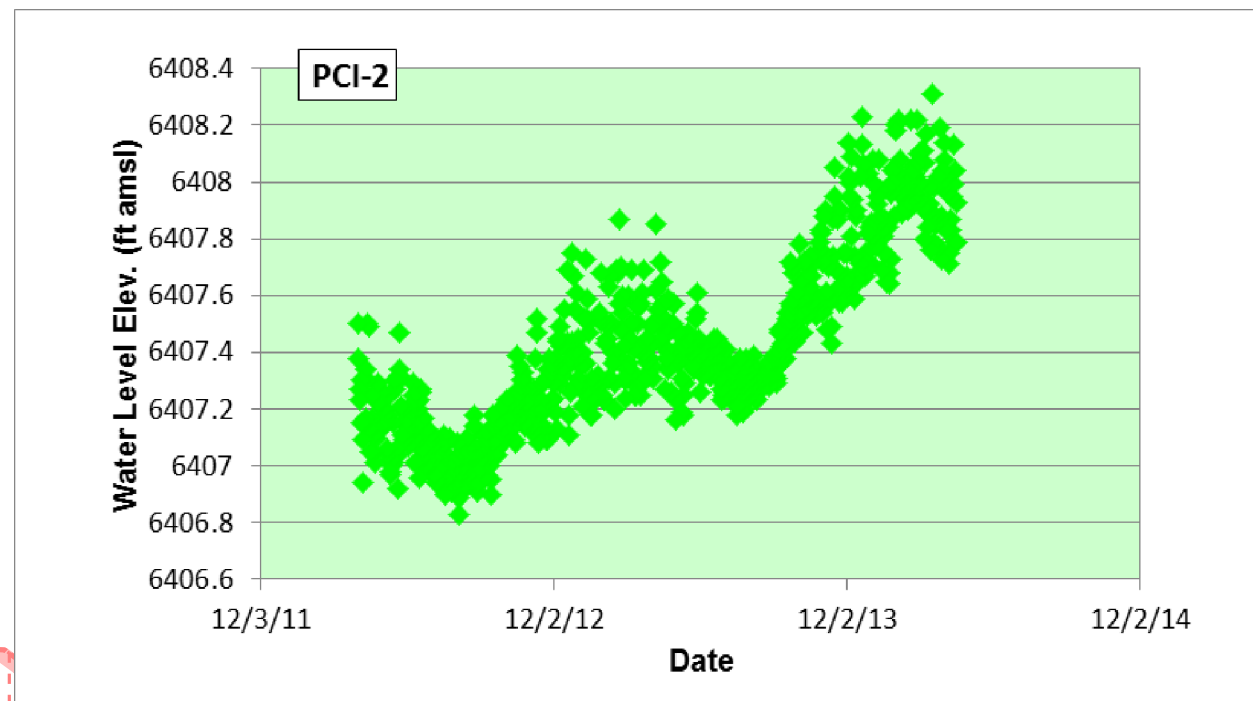


Pajarito Watershed
General Surveillance
Monitoring
Group

Plate 1
Groundwater
elevations

- ◆ Alluvial
- ◆ Intermediate
- ◆ Regional
- Watercourse
- Rio Grande
- - - TA boundary
- Watershed
- LANL boundary
- Watershed



DISCLAIMER:
This map was created for work processes associated with the EP-EI-ER Division. All other
uses for this map should be confirmed with the LANL Environmental Programs Directorate.

DATA SOURCE:
Technical Area Boundaries: Los Alamos National Laboratory, Site Planning & Project Initiation
Group, Infrastructure Planning Office, September 2007, as published 04 December 2008.

LANL Areas Used and Occupied: Los Alamos National Laboratory, Site Planning & Project
Initiation Group, Infrastructure Planning Office, 18 September 2007, as published 04
December 2008.

Watercourse Modified to match specific combinations from Los Alamos National Laboratory,
ENV Environmental Remediation and Surveillance Program, EP5006-0942, 12,000 Scale
GDS, 27 October 2009.

Sampling Locations: Los Alamos National Laboratory, Waste and Environmental Services
Division, Locus ENM database pull.

Map created by Dave Frank
EP-EI-ER GIS Team
July 1, 2014
Map #12-0076-90 Pajarito Monitoring Group, waterlevel

Miles
0 0.25 0.5 1

Kilometers
0 1 2

Intermediate Label
Regional Label
Alluvial Label

State Plane Coordinate System, New Mexico Central Zone, Feet, 1983 North American Datum
Grid interval = 1000ft