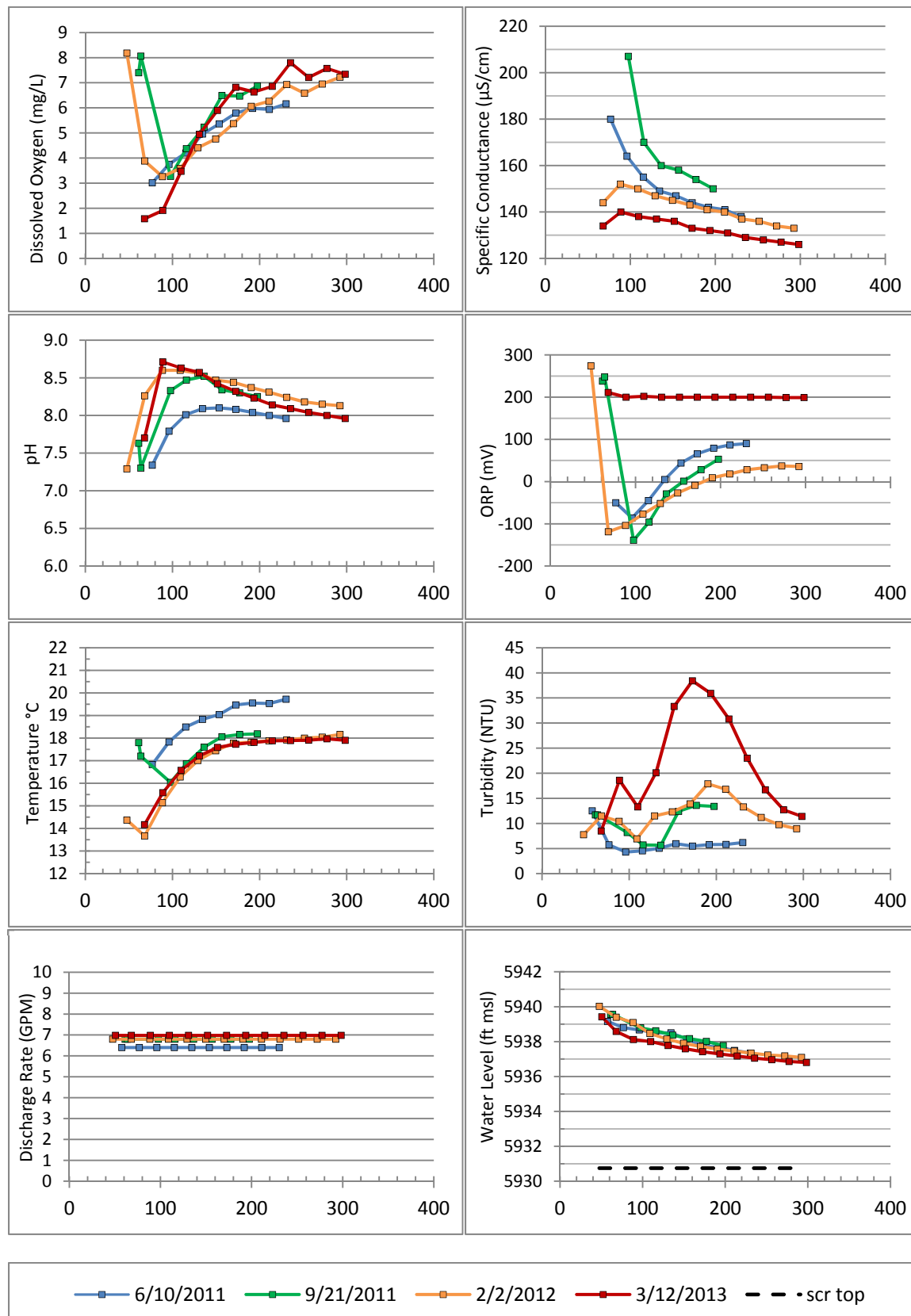


Attachment 1

*R-29 Field Indicator Parameters and
Filtered Iron and Manganese Concentrations*

Figure 1. R-29 field indicator parameters



Notes: X-axis = Cumulative volume purged (gal.).
 Drop pipe (DP) = 47.3 gal.
 1 casing volume (CV) = 40 gal.
 3 CV + DP = 167.3 gal.

Figure 2. R-29 filtered iron concentrations

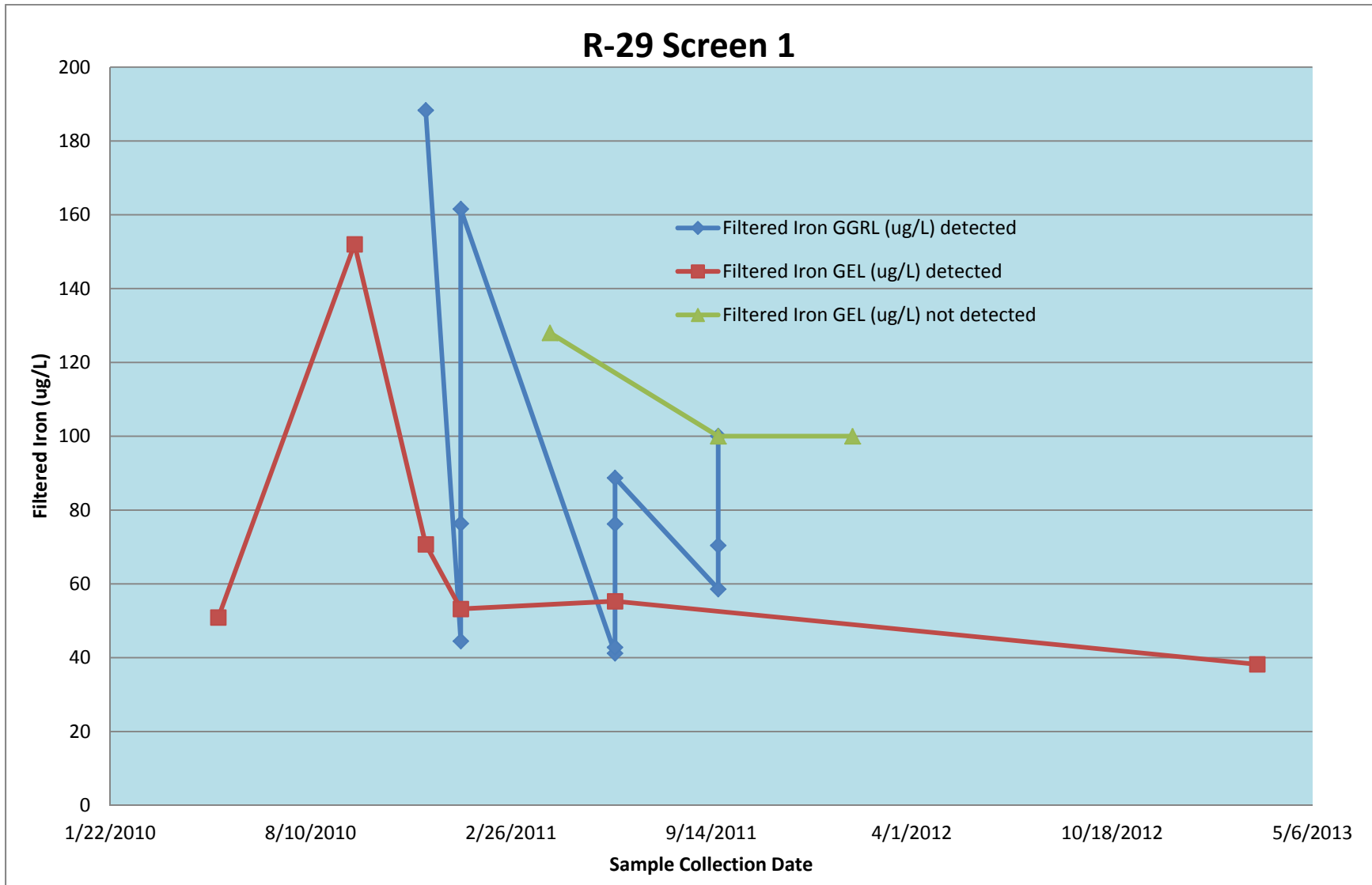


Figure 3. R-29 filtered manganese concentrations

