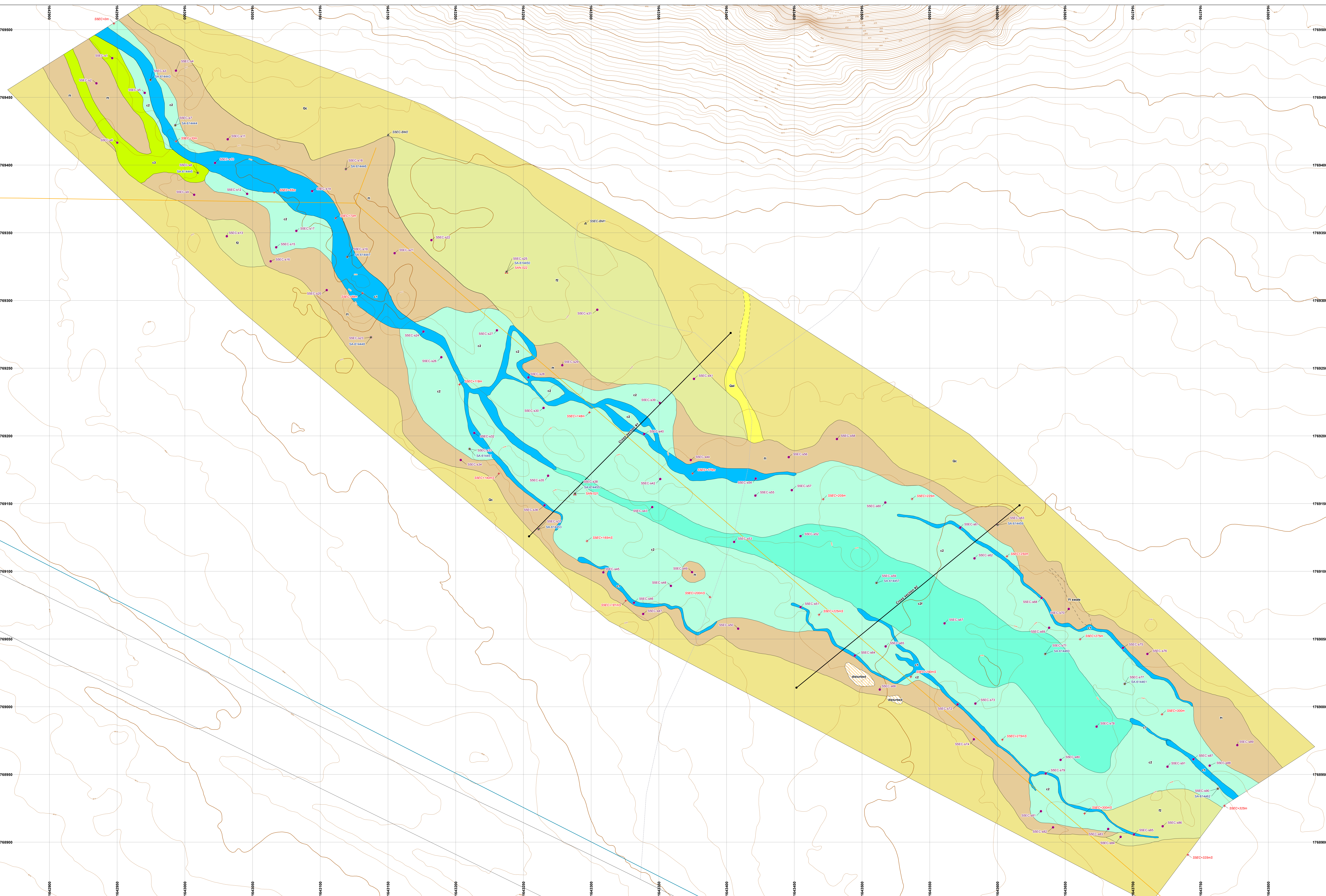


# Sandia Canyon Geomorphology Reach S-5-EC

- ER location ID
- Control point
- Stratigraphic description location
- Dendrochronology sample location
- ▲ Benchmark
- S-SEC cross section
- Topographic Contour
  - 2 ft contour
  - 10 ft contour
- Paved road
- Dirt road
- Electric line
- Water line
- Type of Contact
  - Normal
  - Approximate
  - Headcut
- SSEC Geomorphology
  - c1
  - c2
  - c2f
  - c3
  - disturbed
  - f1
  - f2
  - Qal
  - Qc



**DATA SOURCES**

Files: Owner ID; Intended Scale: Publication Date: 200; Date: 1/12/2012; Topography: USGS; National Laboratory, Earth and Environmental Sciences GISLab; 1:250; Data

Benchmarks: Los Alamos National Laboratory, Environment and Remediation Support Services; 1:250; Work in progress

Boundary, Technical Area (shape file): Los Alamos National Laboratory, SS300 Site Planning and Project Management Group; Unknown; August 16, 2010

Control Points: Los Alamos National Laboratory, Environment and Remediation Support Services; 1:250; Work in progress

Drainage (shape file): Los Alamos National Laboratory, Environment and Remediation Support Services, (ESD)00001; 1:250; Source: E. 2012

Electric Lines: Los Alamos National Laboratory, KSL Site Support Services, Planning, Locating and Mapping Section; Unknown; November 20, 2010

Geography: Los Alamos National Laboratory, Earth and Environmental Sciences GISLab; Unknown; 2002

Headcut (shape file): Los Alamos National Laboratory, Earth and Environmental Sciences GISLab; Unknown; 2002

Other Location ID: Los Alamos National Laboratory, Waste and Environmental Services Division; 1:250; August 12, 2012

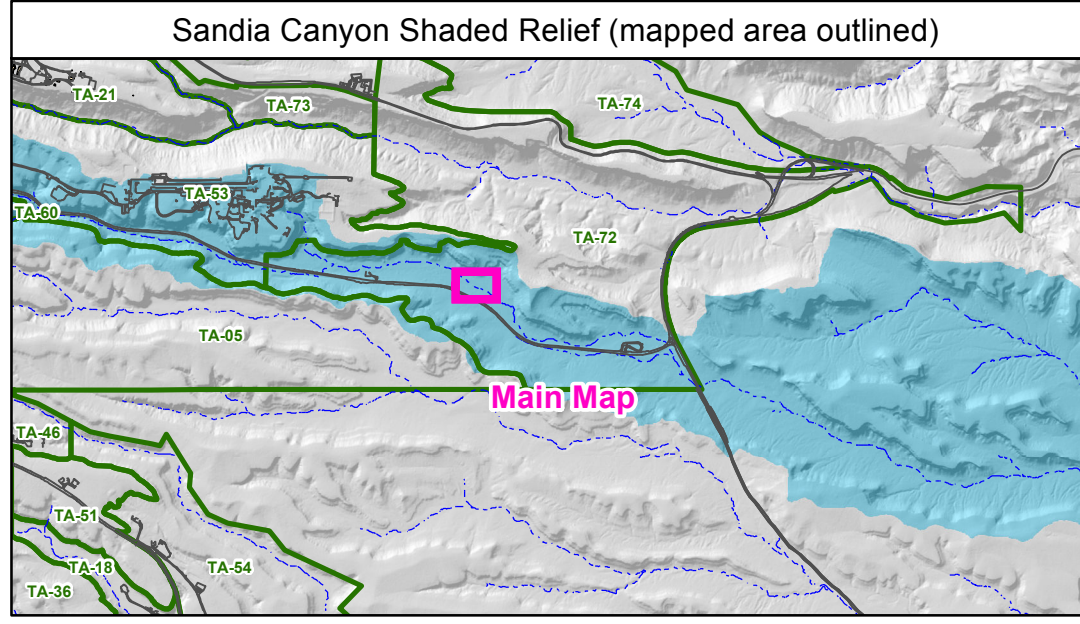
Roads, Surfaced: Los Alamos National Laboratory, KSL Site Support Services, Planning, Locating and Mapping Section; Unknown; August 20, 2011

Roads, Unsurfaced: Los Alamos National Laboratory, KSL Site Support Services, Planning, Locating and Mapping Section; Unknown; August 20, 2011

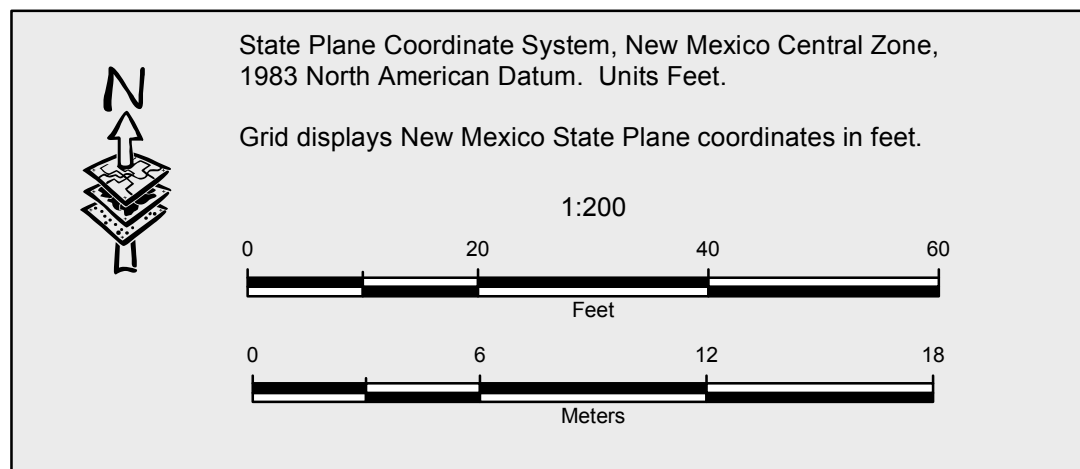
Stratigraphic description locations: Los Alamos National Laboratory, Environment and Remediation Support Services; 1:250; Work in progress

Water Lines: Los Alamos National Laboratory, KSL Site Support Services, Planning, Locating and Mapping Section; Unknown; January 15, 2009

Waterline cross files: Los Alamos National Laboratory, Environment and Remediation Support Services, (ESD)00002; 1:250; August 5, 2011



Cartography by: Liz Miller Request #: 14346  
Date: January 17, 2012  
GISLab Map #: m202295 Revised date: August 22, 2012



**DISCLAIMER:** This map was created for work purposes associated with the Sandia Canyon Southwest Central Zone, 1903 North American Datum, UTM Zone. It is not intended for use in any other context. For more information, contact the Sandia Canyon Southwest Central Zone, Earth and Environmental Sciences, Los Alamos National Laboratory, Los Alamos, New Mexico, 87545.