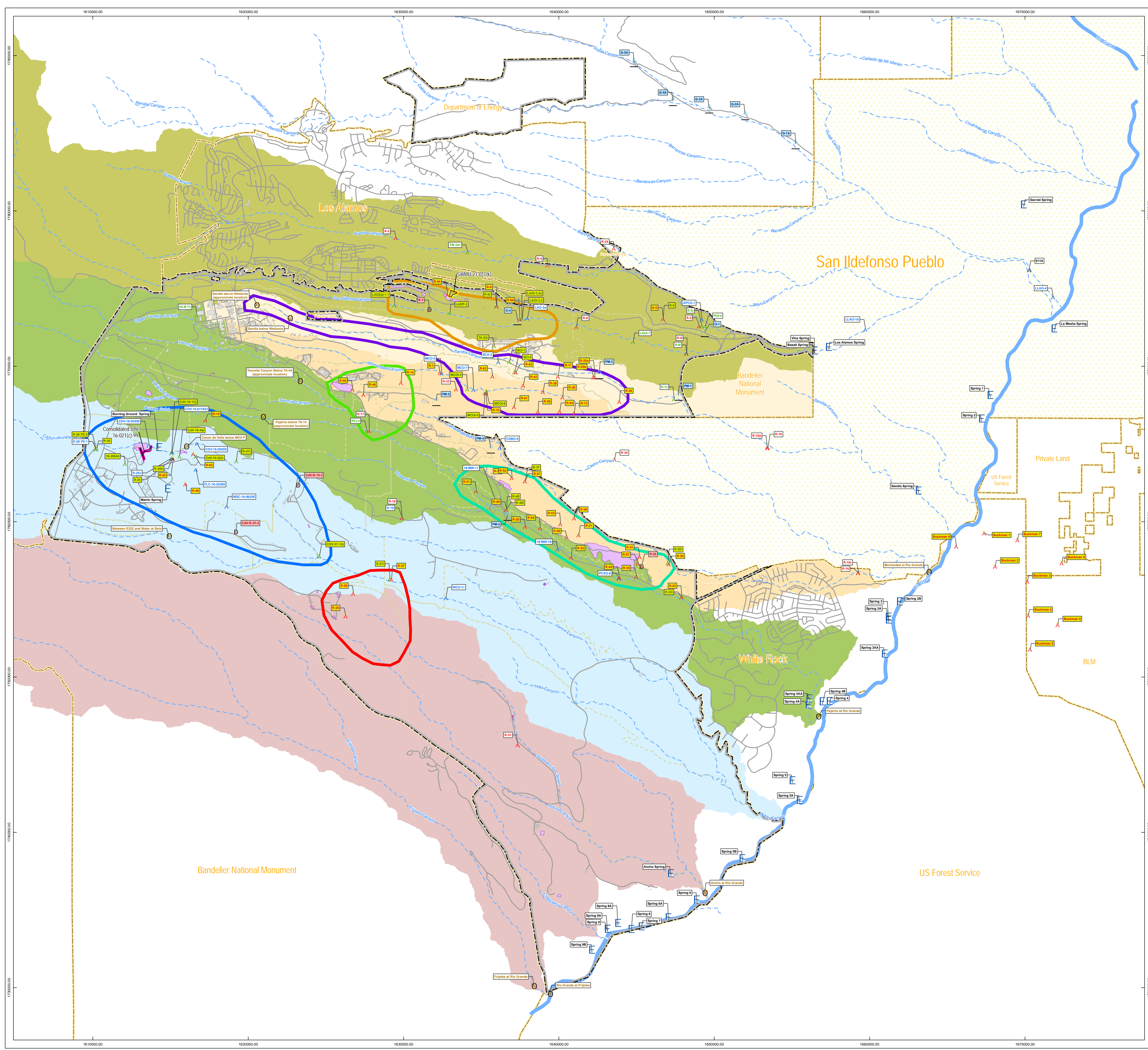


PLATE 1

Monitoring Group Overview



- Municipal supply well
 - Alluvial well, general surveillance or water level only
 - Base flow location, general surveillance
 - Intermediate well, general surveillance
 - Intermediate well, monitoring group
 - Regional well, general surveillance
 - Regional well, monitoring group
 - Regional well, monitoring group, inactive
 - Spring location, general surveillance
 - Gage station
-
- Consolidated Unit 16-021(c)-99
 - SWMU 21-011(k)
 - LANL boundary
 - Surrounding land
 - San Ildefonso Pueblo
 - TA boundary
 - Chromium Investigation Monitoring Group
 - MDA AB monitoring group
 - MDA C monitoring group
 - TA-16260 monitoring group
 - TA-21 monitoring group
 - TA-54 monitoring group
 - Drainage
 - Rio Grande
 - Paved road
 - MDA
 - LANL structure
 - Pajarito Canyon Watershed
 - Water Canyon Watershed
 - Ancho Canyon Watershed
 - Los Alamos Canyon Watershed
 - Sandia Canyon Watershed
 - Mortandad Canyon Watershed

New Mexico State Plane Coordinate System Central Zone (3002)
 North American Datum, 1983 (NAD 83)
 US Survey Ft
 GIS: Dave Frank, dff@lanl.gov, 665-8182
 Date: 15-June-2011
 Revision: 0.1
 Revised: 17-November-2011
 Map Number: 11-0065-01

DISCLAIMER: This map was created for work processes associated with EP-ET-ER division. All other uses for this map should be confirmed with LANL staff.

