

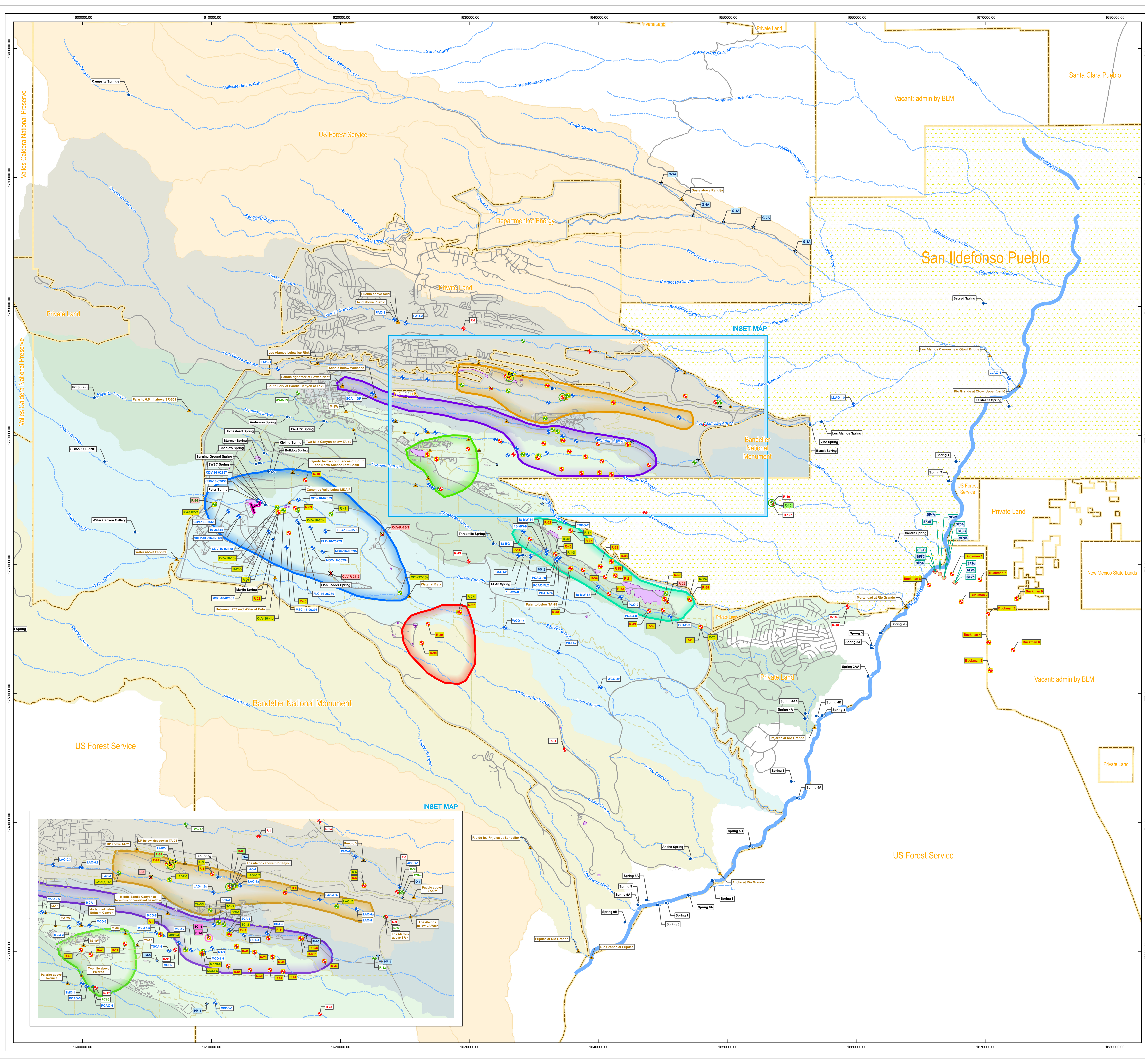
PLATE 1

Monitoring Group Overview

- ▲ Base flow, general surveillance
- ★ Water supply well
- Spring location, general surveillance
- ◆ Alluvial well, general surveillance
- ✕ Alluvial well, general surveillance, inactive
- ◆ Intermediate well, general surveillance
- ◆ Intermediate well, monitoring group, planned
- ⊙ Intermediate well, general surveillance, planned
- ✕ Intermediate well, monitoring group, inactive
- Piezometer
- ◆ Regional well, general surveillance
- ◆ Regional well, monitoring group
- ✕ Regional well, monitoring group, inactive
- ⊙ Regional well, monitoring group, planned
- ⊙ Intermediate and regional well, monitoring group, planned

- Intermediate and regional well, monitoring group, planned
- Intermediate well, general surveillance, planned
- Intermediate well, monitoring group, inactive
- Alluvial well, general surveillance, inactive
- Regional well, monitoring group, planned
- Regional well, monitoring group, inactive
- Intermediate well, general surveillance
- Base flow location, general surveillance
- Spring location, general surveillance
- Regional well, general surveillance
- Intermediate well, monitoring group
- Alluvial well, general surveillance
- Regional well, monitoring group
- Water supply well
- Piezometer

- Consolidated Unit 16-021(c)-99
- PRS 21-011(k)
- LANL Boundary
- Surrounding land
- San Ildefonso Pueblo
- TA boundary
- Chromium Investigation Monitoring Group
- MDA-AB Monitoring Group
- MDA-C Monitoring Group
- TA-16-260 Monitoring Group
- TA-21 Monitoring Group
- TA-54 Monitoring Group
- Drainage
- Rio Grande
- Paved road
- MDA
- LANL structure
- Surrounding canyon
- Los Alamos Canyon Watershed
- Sandia Canyon Watershed
- Mortandad Canyon Watershed
- Pajarito Canyon Watershed
- Water Canyon Watershed
- Ancho Canyon Watershed



New Mexico State Plane Coordinate System Central Zone (3002)
North American Datum, 1983 (NAD 83)

US Survey Ft
GIS: Dave Frank, dff@lanl.gov, 665-8182
Date: 15-June-2011
Revision: 0.0
Revised:
Map Number: 11-0065-01

DISCLAIMER: This map was created for work processes associated with EP-ET ER diversion. All other uses for this map should be confirmed with LANL staff.

