

**Plate 4:**  
**Enclosure 3 excavation**  
**area and confirmation**  
**sample locations**

*Volume Excavated 3,157 yd<sup>3</sup>*

*Maximum Depth*  
14.81 ft

*Start Date / Finish Date*  
Sept 21, 2010 / Jan 26, 2011

10 ft by 10 ft Project Reference Grid, Material Disposal Area B, Unpublished Data; Portage, Inc., January 1, 2009

Excavated grid cell & Excavated and backfilled grid cell, Material Area B, Unpublished Data; Portage, Inc., February 18, 2011

MDA B Confirmation Samples, TA-21 Material Disposal Area B, Unpublished Data; Portage, Inc., August 11, 2011

Paved Road Arcs; Los Alamos National Laboratory, KSL Site Support Services, Planning, Locating and Mapping Section; 06 January 2004; as published 15 October 2008.

Technical Area Boundaries; Los Alamos National Laboratory, Site Planning & Project Initiation Group, Infrastructure Planning Office; September 2007; as published 04 December 2008.

LANL Areas Used and Occupied; Los Alamos National Laboratory, Site Planning & Project Initiation Group, Infrastructure Planning Office; September 19, 2007; as published December 4, 2008

Trench Boundaries per Direct Push Technology, Material Disposal Area B, Unpublished Data; Portage, Inc., January 12, 2010

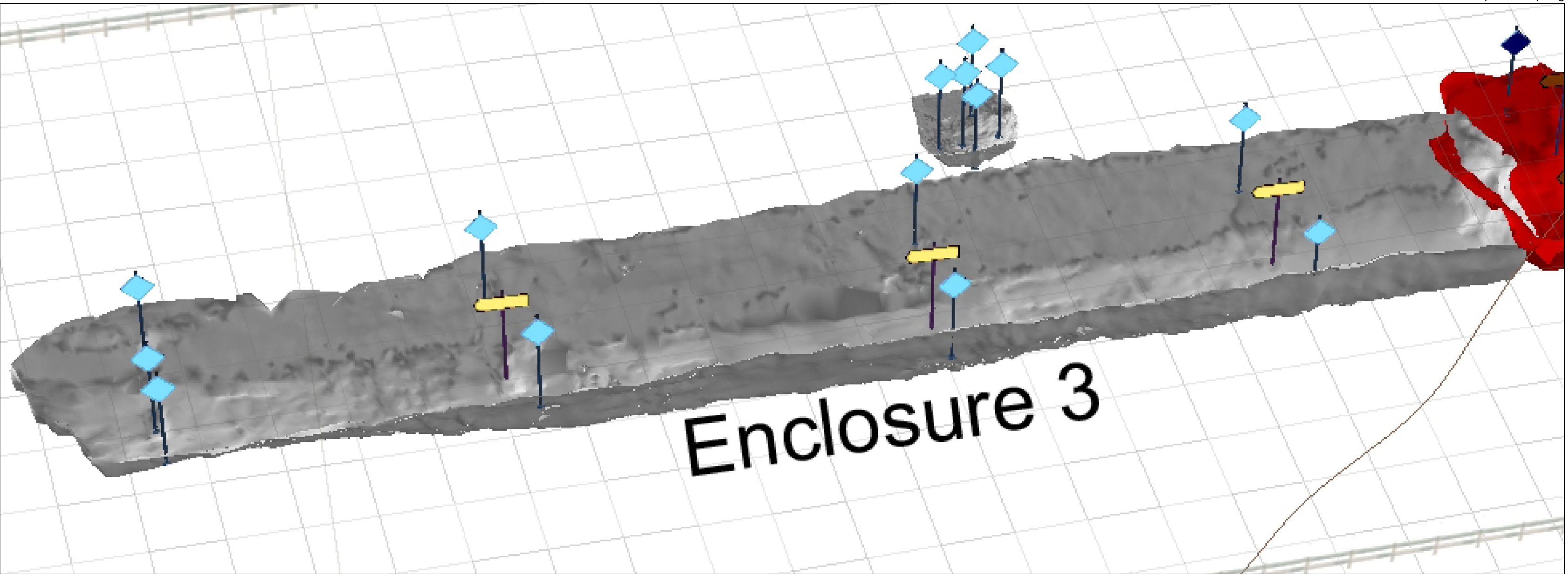
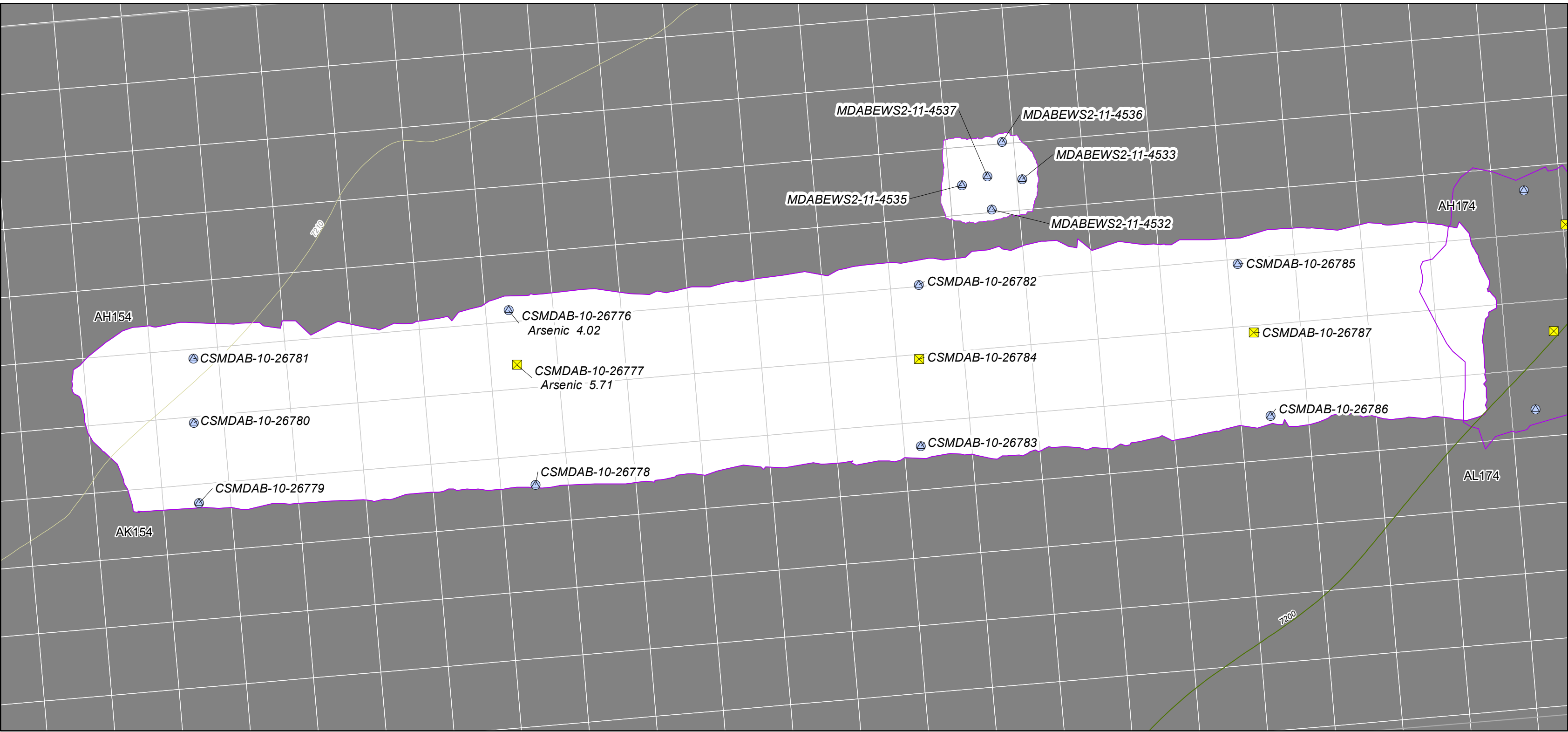
Materials Disposal Areas; Los Alamos National Laboratory, ENV Environmental Remediation and Surveillance Program; ER2004-0221; 1:2,500 Scale Data; 23 April 2004.

Los Alamos County Structures; County of Los Alamos; Original data from Los Alamos National Laboratory, Environmental Restoration (ER) Project. After 2003 flyover, 1400 new structure polygons added by Bohannon Houston, Inc.; as published August 2003

Hypsography, 10 Foot Contour Interval; Los Alamos National Laboratory, ENV Environmental Remediation and Surveillance Program; 1991.

Hypsography, 20 Foot Contour Interval; Los Alamos National Laboratory, ENV Environmental Remediation and Surveillance Program; 1991.

Hypsography, 100 Foot Contour Interval; Los Alamos National Laboratory, ENV Environmental Remediation and Surveillance Program; 1991.



Legend:

- Sample < 10 ft bgs
- Sample > 10 ft bgs
- Paved road
- Technical Area boundary
- 10-ft contour interval
- 20-ft contour interval
- 100-ft contour interval
- Excavated area
- 10 ft x 10 ft project reference grid
- MDA-B

State Plane Coordinate System  
New Mexico, Central Zone, US Foot  
NAD 1983, NGVD29

0 2 4 8 12 16 20 24 Feet

ALM Northwind, Inc.  
Date: 09.12.2011  
Map: MDAB\_Enclosure3withSampleLocs09122011

Disclaimer: This map was created for work processes associated with the MDA B IR. All other uses for this map should be confirmed with LANL EP-ERSS staff.