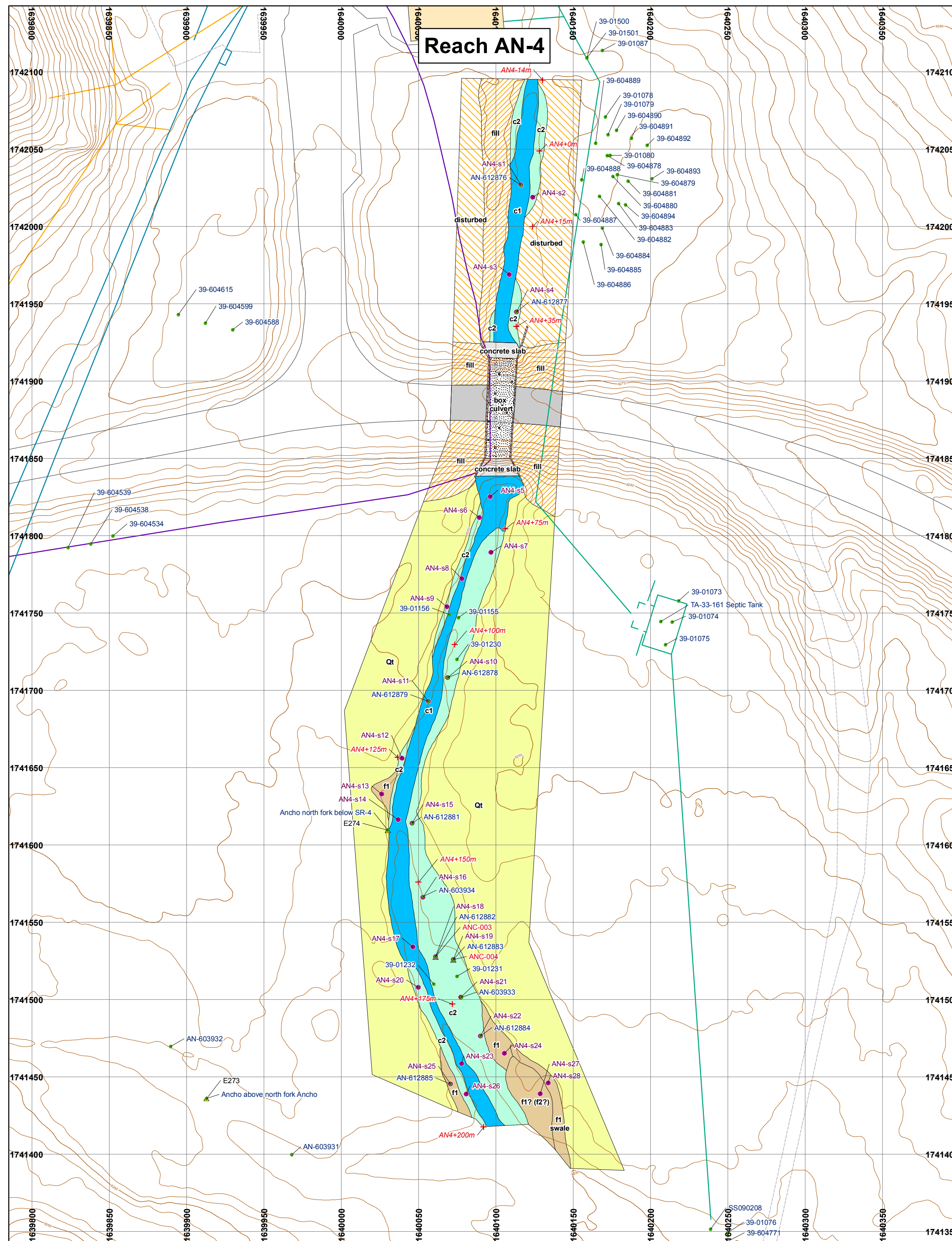
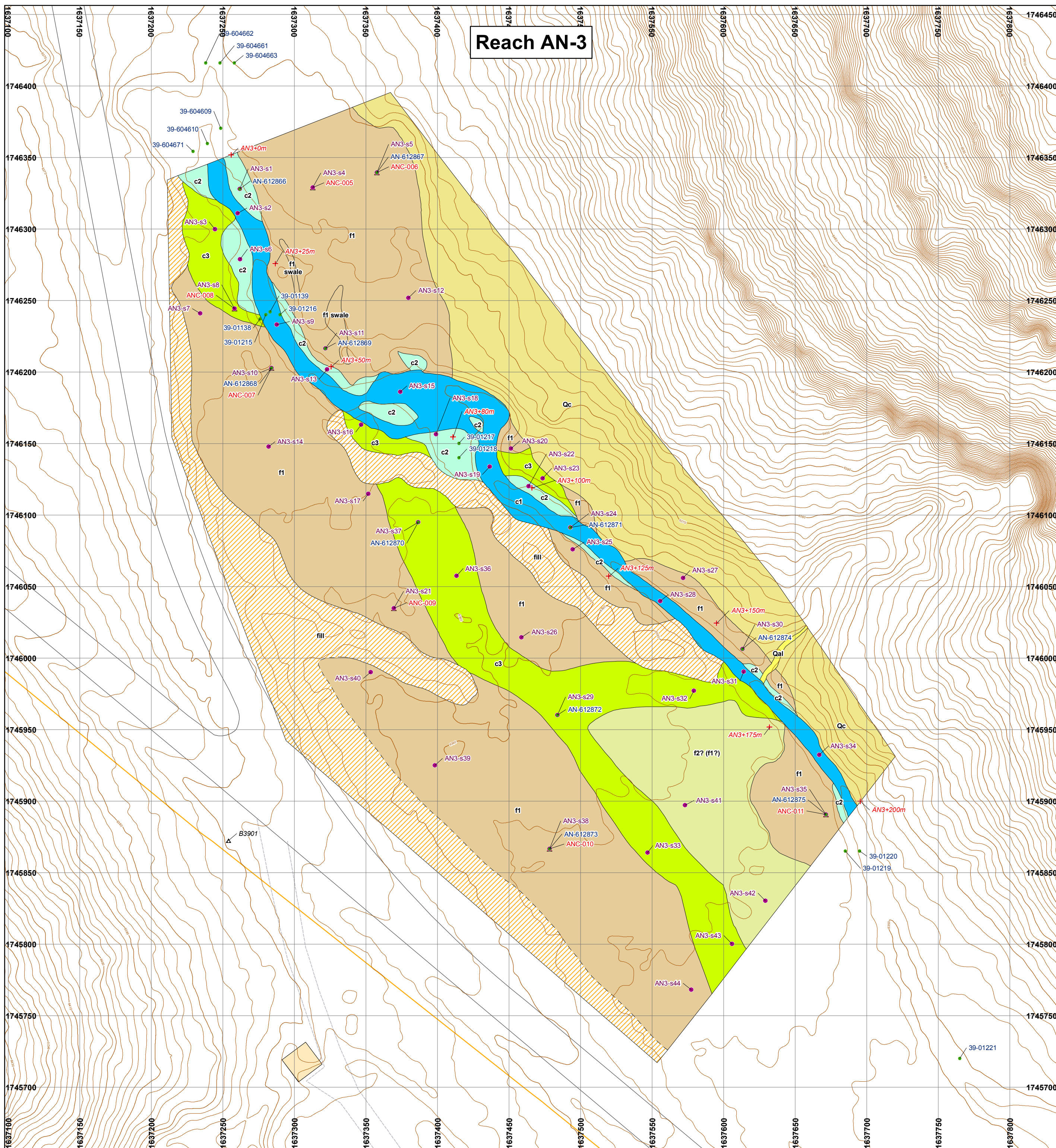
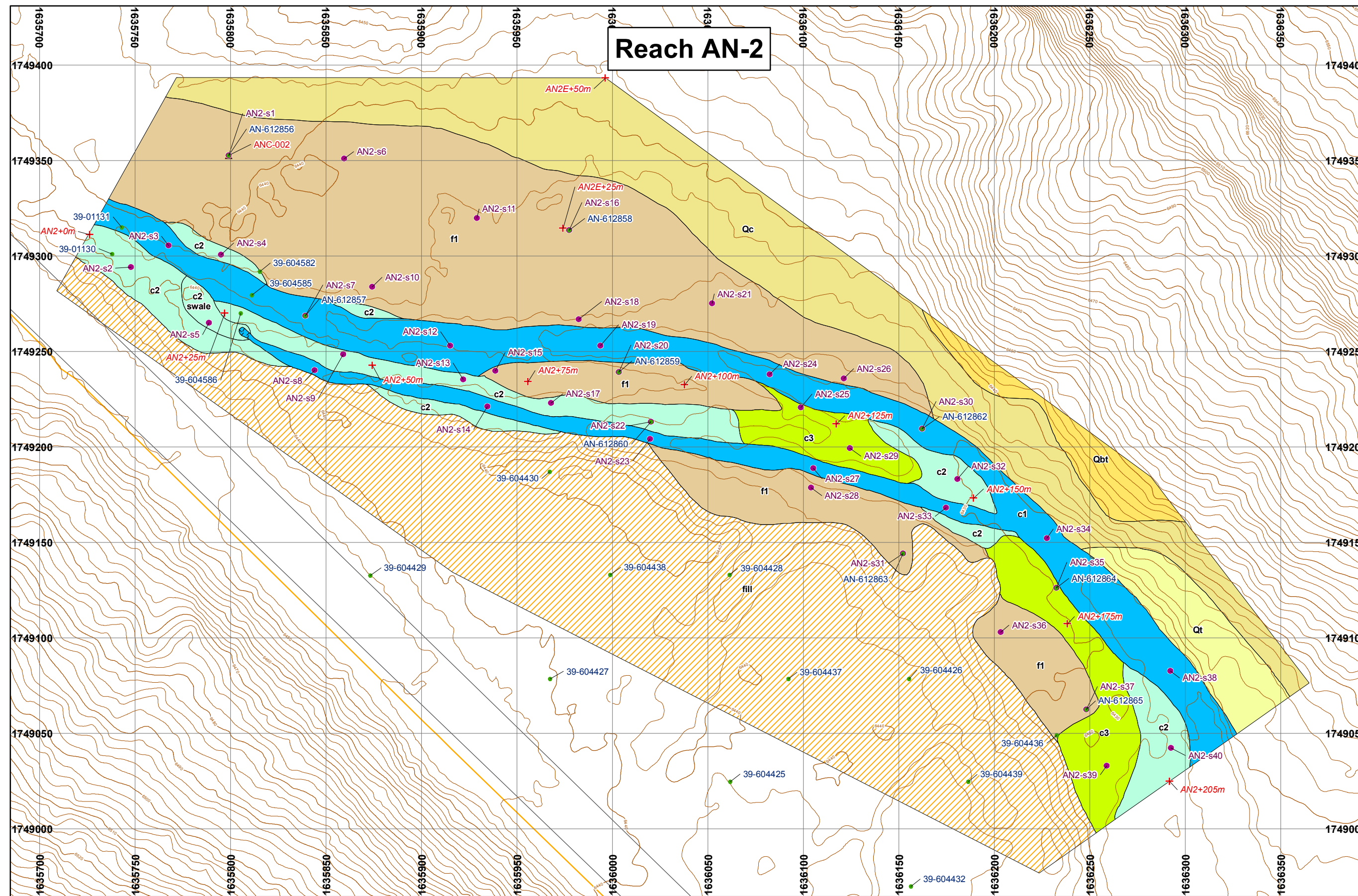
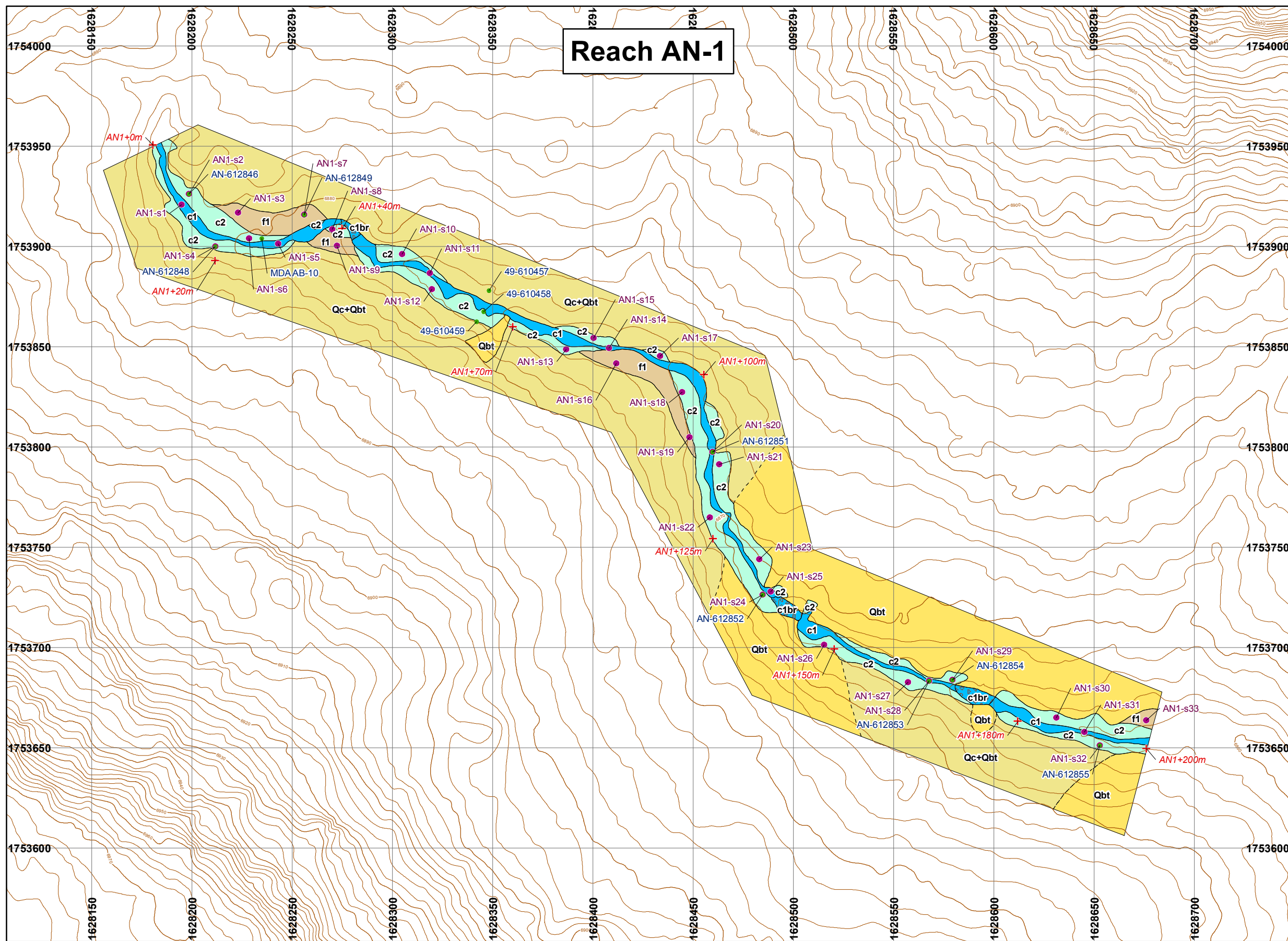


# Plate 2. North Ancho Canyon Geomorphology, Reaches AN-1, AN-2, AN-3, and AN-4



- ER location ID
  - Stratigraphic description location
  - Dendrochronology sample location
  - Control point
  - Benchmark
  - Gaging station
  - Topographic Contour
    - 2 ft contour
    - 10 ft contour
    - Paved road
    - Dirt road
    - Electric line
    - Gas line
    - Water line
    - Sewer line
    - Structure
  - Type of Contact
    - Normal
    - Approximate
- Geomorphology**
- c1
  - c1br
  - c2
  - c3
  - concrete
  - disturbed
  - f1
  - f2
  - fill
  - Qal
  - Qbt
  - Qc
  - Qt
  - road
  - concrete slab
  - concrete retaining wall

**DATA SOURCES**

Title: Owner: ID: Intended Scale: Publication Date.

2000 LORAR Hydrography: Los Alamos National Laboratory, Earth and Environmental Sciences GISLab, 1:1200. Draft.

Boundary, Technical Areas (index map): Los Alamos National Laboratory, SMO Site Planning and Project Initiation Group, Unknown, September 15, 2007.

Control Points: Los Alamos National Laboratory, Environment and Remediation Support Services, 1:200. Work in progress.

Drainage (index map): Los Alamos National Laboratory, Environment and Remediation Support Services, ER2002-0591, 1:24,000, 2002.

Geomorphology: Los Alamos National Laboratory, Environment and Remediation Support Services, 1:200. Work in progress.

Hillshade (index map): Los Alamos National Laboratory, Earth and Environmental Sciences GISLab, Unknown, 2002.

Other Location IDs: Los Alamos National Laboratory, Waste and Environmental Sciences Division, 1:2,500, June 17, 2010.

Roads, Surfaced: Los Alamos National Laboratory, KSL Site Support Services, Planning, Locating, and Mapping Section, Unknown, November 30, 2010.

Roads, Unsurfaced: Los Alamos National Laboratory, KSL Site Support Services, Planning, Locating, and Mapping Section, Unknown, November 30, 2010.

Structures: Los Alamos National Laboratory, KSL Site Support Services, Planning, Locating, and Mapping Section, Unknown, November 30, 2010.

Utilities: Los Alamos National Laboratory, KSL Site Support Services, Planning, Locating and Mapping Section, Unknown, September 10, 2007.

Waterhead (index map): Los Alamos National Laboratory, Environment and Remediation Support Services, ER2006-0942, 1:2,500, October 27, 2006.

**Ancho Canyon Shaded Relief (mapped areas outlined)**

Investigation Report for Ancho, Chaquehul, and Indio Canyons, LA-UR-11-1234

Cartography by: Liz Miller Request #: 14304

GISLab Map #: m202218 Date: February 22, 2011

State Plane Coordinate System, New Mexico Central Zone, 1983 North American Datum.

Grid displays New Mexico State Plane coordinates in feet.

1:600

0 50 100 150

0 15 30 45

Feet

Meters

DISCLAIMER: This map was created for work processes associated with the Investigation Report for Ancho, Chaquehul, and Indio Canyons. All other uses for this map should be confirmed with LANL Environmental Programs Directorate.

GISLab, Earth and Environmental Sciences, Los Alamos National Laboratory, Los Alamos, New Mexico, 87545.